



A N N I E



L I N G



A N N I E L I N G

ONE and ALL Collection Concept	p. 3 - 4
ONE and ALL Collection Outfits	p. 5 - 6
ONE and ALL Style and Material Concept	p. 7
ONE and ALL Collection style sketches and colorways	p. 8 - 15
ONE and ALL Technology in Materials	p. 16 - 21
Brand Introduction	p. 22
Brand Mission	p. 23
Designer Biography	p. 24
We Are ONE - We Are Together	p. 25

ONE and ALL Collection Concept

A N N I E L I N G

EXPERIMENTAL EXPRESSIONS

ONE and ALL is about connection, adaptability and embracing wellbeing. With cutting-edge textile technology and innovative design features, the collection is a fresh way to reimagine the future of fashion.

The collection grows from the concept that each one of us is a part of all of us. We are all connected to, influenced by and responsible for one another. That spirit of togetherness extends to our respect for the earth and how we preserve resources and minimise waste. ONE and ALL uses materials and fabric treatments that are antibacterial and antiviral, to infuse all clothing with functional, protective properties.

ONE and ALL Collection Concept

A N N I E L I N G

The highlight of the collection is its versatility. Employing a unique and elegant modular fashion concept with seamless and hidden attachments, pieces feature interchangeable sleeves, tops that connect to skirts to become dresses, and components that can be mixed and matched with ease. The neutral but timeless palette and stylish yet subtle silhouettes are easy to accessorise and personalise, making the collection a self-contained capsule wardrobe that offers a dozen outfits from just a few staple pieces.

Perfect for travel, or when balancing work and play, the designs enable wearers to experiment with a refreshed look every day. The components and garments allow for the creation of different levels of formality and can be reconfigured according to weather and special occasions. The inclusion of antimicrobial fabrics means clothes stay fresher for longer, which gives each outfit greater mileage and wear.

ONE and ALL Collection

A N N I E L I N G



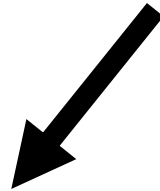
<https://youtu.be/hOwLjHbycM>

ONE and ALL Collection

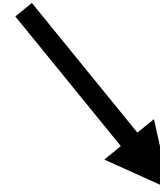
A N N I E L I N G



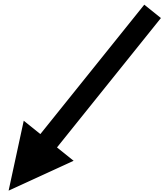
ONE and ALL one for all – all for one



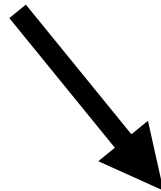
versatile multi - styling



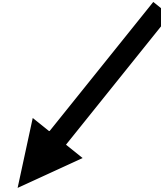
protective material



on-off styling

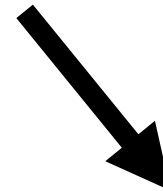


Interchangeable



anti-bacterial

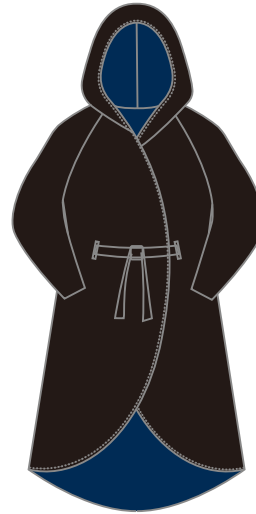
anti-viral



sustainable



A N N I E L I N G



reversible long sleeve overcoat
#CT2201N

	black		
body			
inner	navy	titanium	red
body			



removable sleeve hoodie mesh trim top
#TP0002 vSleeves: #TSV0002L

	black	white	navy	red
body/ sleeve				
	red	white	white	black
mesh				

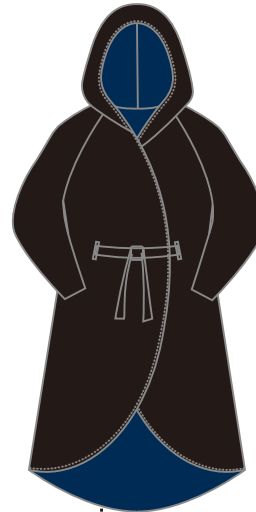


ruffle circle skirt
#SK0005

	black	white	navy	red
body				

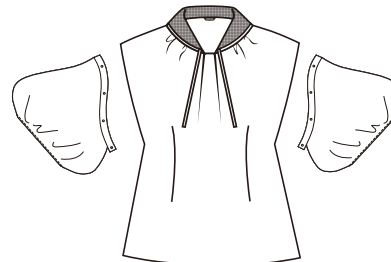


A N N I E L I N G



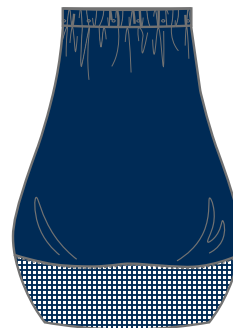
reversible long sleeve overcoat
#CT2201N

	black		
body			
	navy	titanium	red
inner body			



centre pleat removable sleeve
#TP0010 Sleeves: #TSV009M

	black	white
body/ sleeve		

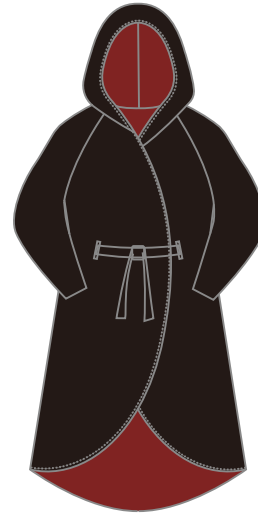


bubble free size skirt
#SK0004

	black	white	navy
body			



A N N I E L I N G



reversible long sleeve overcoat
#CT2201N

	black		
body			
	navy	titanium	red
inner body			



removable wide shape pleat detail top
#TP0004 Sleeves: #TSV0004L

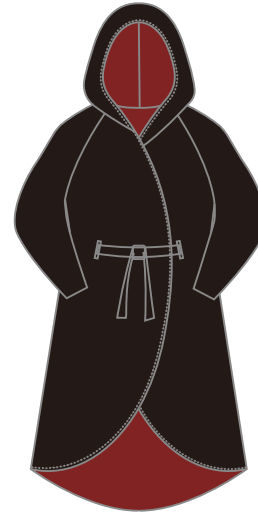
	black	red
body		
	titanium	black
sleeve		

pleated free size skirt
#SK0002

	black	navy	titanium	red
base				



A N N I E L I N G



reversible long sleeve overcoat
#CT2201N

	black		
body			
	navy	titanium	red
inner body			



removable sleeve vee-neck knit top
#TP0006V Sleeves: #TSV0005L

	black	white	navy	titanium
body				
	red	white	titanium	black
sleeve				

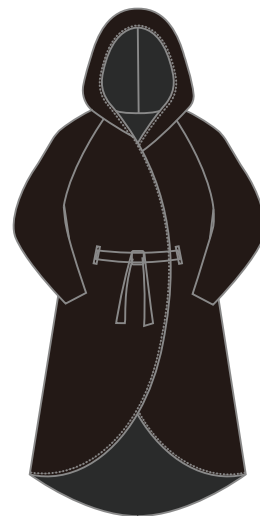


multi mesh layers free size skirt
#SK0001

	black	white	navy	red
body				

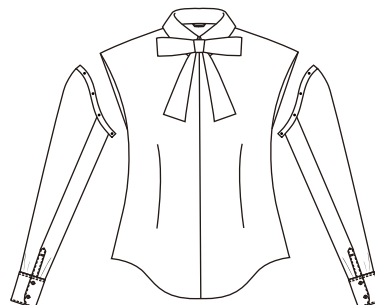


ANNIE LING



reversible long sleeve overcoat
#CT2201N

	black		
body			
	navy	titanium	red
inner body			



removable sleeve neck tie shirt
#TP0001 Sleeves: #TSV0013L

	black	white	navy
body			
	black	white	navy
sleeve/ fabric tie			
	red	black	white
mesh tie			

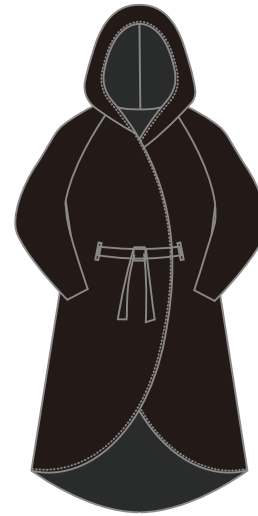


flare free size skirt
#SK0003

	black	navy	red
body			

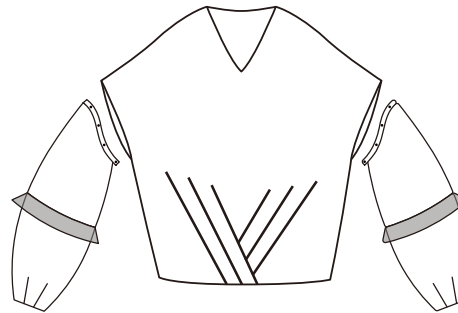


ANNIE LING



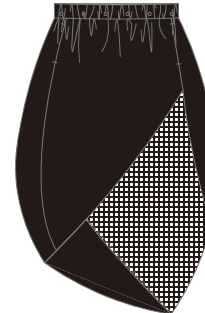
reversible long sleeve overcoat
#CT2201N

	black		
body			
	navy	titanium	red
inner body			



removable sleeve tiger claw top
#TP0009 Sleeves: #SV0006L

	black	white	titanium
body/ sleeve			
	black	white	red
mesh			

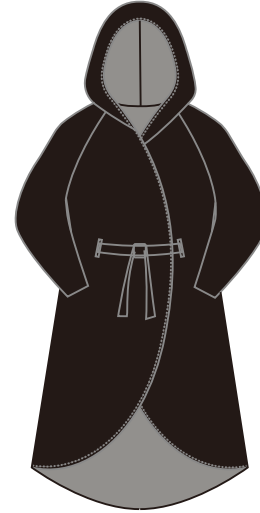


multi panel wrap skirt
#SK0006

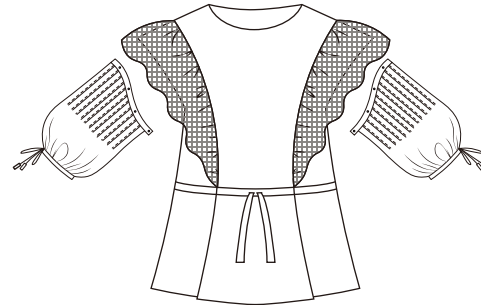
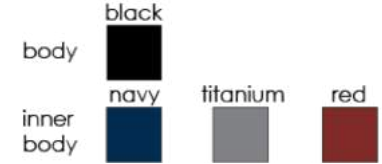
	black	white	navy
body			



ANNIE LING



reversible long sleeve overcoat
#CT2201N



removable sleeve side ruffle trim top
#TP0003 Sleeves: #TSV0001M

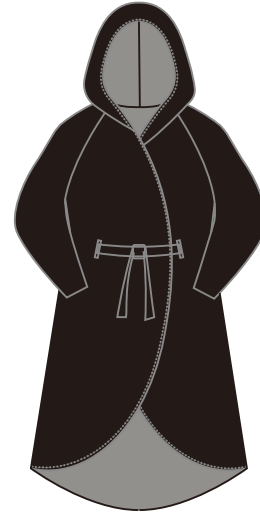


pleated free size skirt
#SK0002

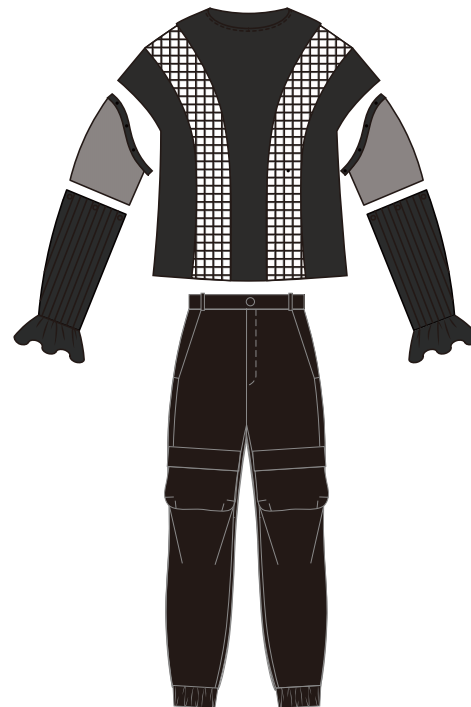
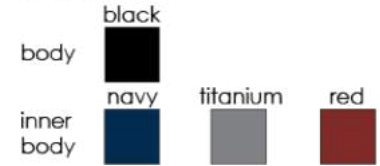




ANNIE LING



reversible long sleeve overcoat
#CT2201N



multi panel top with removable sleeves
#TP0008 Sleeves: #SV0005L

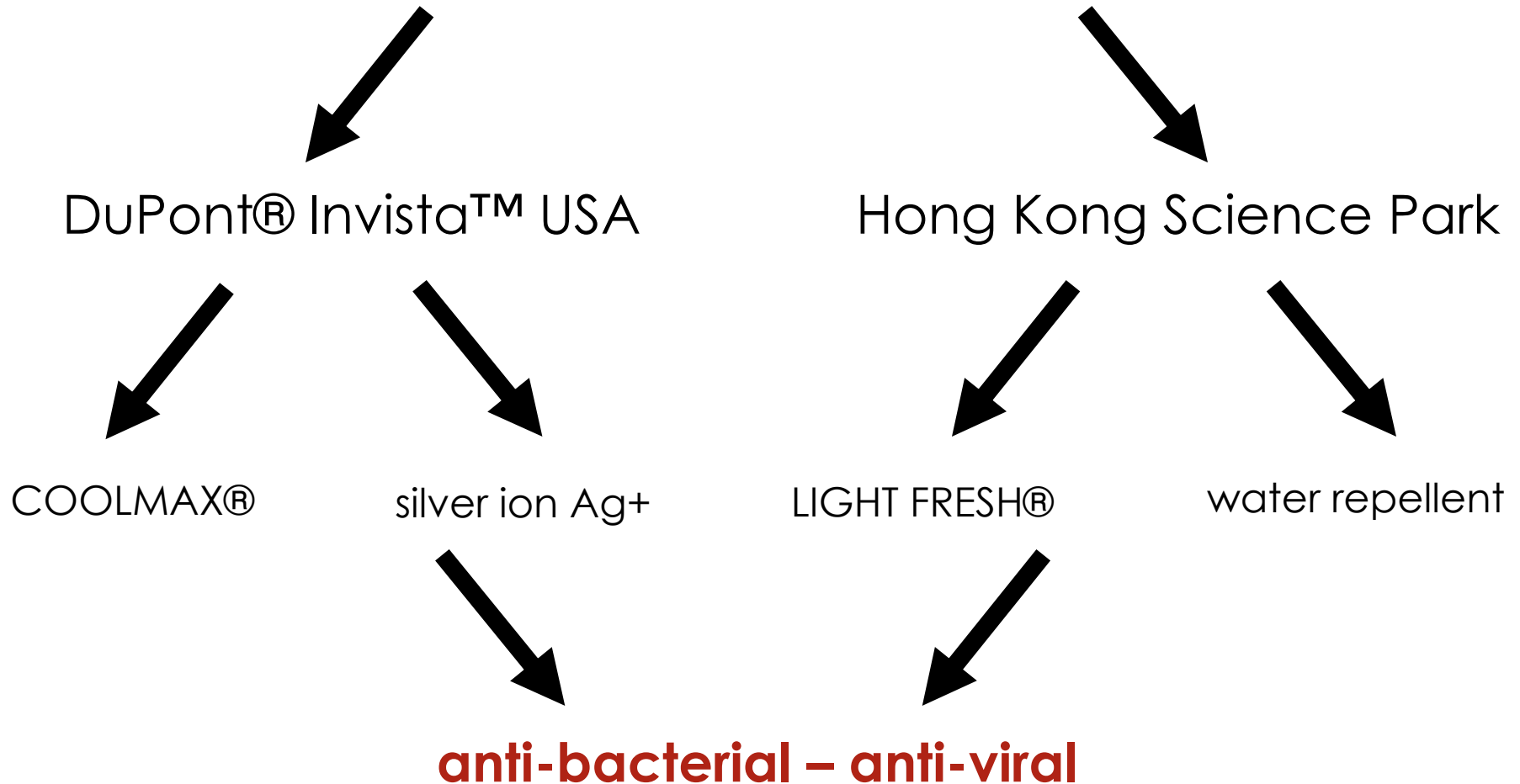


multi pockets cargo pants
#PT2201N



ONE and ALL Technology in Materials

protection technology



ONE and ALL Technology in Materials



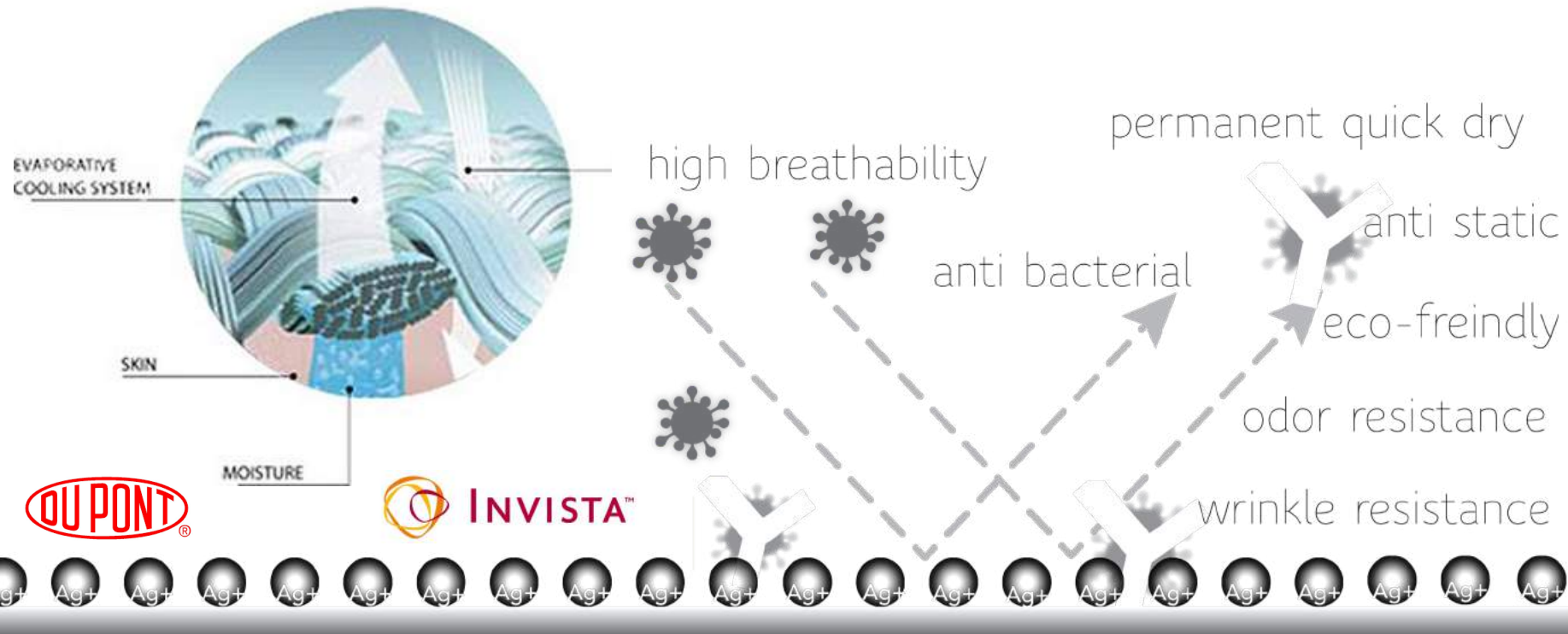
innovation with technology

Protection and Sustainable



ONE and ALL Technology in Materials

United States DuPont® Invista™
silver ion 99% anti bacterial - COOLMAX® technology



ONE and ALL Technology in Materials

United States DuPont® Invista™ silver ion 99% anti bacterial technology certificate

intertek
Total Quality. Assured.

Number: HKGT05104808

TEST REPORT

Tests Conducted (As Requested By The Applicant)

Test Method for Antibacterial Finishes on Textile Materials (Quantitative)

Test Method: American Association of Textile Chemists and Colorists (AATCC) Technical Manual, Test Method 100-2019.

Ultraviolet sterilization of sample before test.

Test culture: *Staphylococcus aureus* (ATCC 6538)

Klebsiella pneumoniae (ATCC 4352)

Inoculum suspension medium: 1:20 nutrient broth with 0.05% Triton X-100

Inoculum concentration: $1-3 \times 10^8$ CFU/mL

Test specimen: 1.0g (4 pieces of circular swatches 4.8cm in diameter) and apply 1mL inoculum per trial

Neutralizing solution: Lethen Broth

Contact time: 24 hours

Incubation temperature: 37°C

Incubation period: 48 hours

Agar medium: Nutrient agar

Result:

Name of Tested Bacteria (Strain Number)	<i>Staphylococcus aureus</i> (ATCC 6538)	<i>Klebsiella pneumoniae</i> (ATCC 4352)
Initial count	1.02×10^8 CFU/mL	1.06×10^8 CFU/mL
The number of bacteria recovered from the inoculated tested sample swatches immediately after inoculation ("0" contact time) (B)	1.42×10^7 CFU/Sample	1.40×10^7 CFU/Sample
The number of bacteria recovered from the inoculated tested sample swatches incubated over 24 hours contact period (A)	<100 CFU/Sample	<100 CFU/Sample
Percent reduction of Bacteria (R)	99.9%	99.9%

Page 3 Of 4

Intertek Testing Services Hong Kong Limited
2/F Garment Centre
576 Castle Peak Road
Kowloon, Hong Kong
Tel: +852 2171 8888
Fax: +852 2786 1903
intertek.com.hk



TESTEX AG, SWISS TEXTILE TESTING INSTITUTE
GOTTHARDSTRASSE 81
POSTFACH 2156
8002 ZÜRICH, SWITZERLAND

OEKO-TEX®
INSPIRING CONFIDENCE

CERTIFICATE

The company



is granted authorization according to STANDARD 100 by OEKO-TEX® to use the STANDARD 100 by OEKO-TEX® mark, based on our test report SH050 159719.4

for the following articles:

Commission dyeing and printing: Woven fabric made of 100% CO, CO/EL, CO/LI, CO/Lyocell/EL, CO/CV/EL, CO/PA/EL, CO/PES/EL, semi-bleached, piece-dyed or printed (reactive, vat, acid, disperse dyestuffs or pigment) and finished

The results of the inspection made according to STANDARD 100 by OEKO-TEX®, Annex 4, product class I have shown that the above mentioned goods meet the human-ecological requirements of the STANDARD 100 by OEKO-TEX® presently established in Annex 4 for baby articles.

The certified articles fulfil requirements of Annex XVII of REACH (incl. the use of azo colourants, nickel release, etc.), the American requirement regarding total content of lead in children's articles (CPSIA, with the exception of accessories made from glass) and of the Chinese standards GB 18401:2010 (labelling requirements were not verified).

The holder of this certificate, who has issued a conformity declaration according to ISO 17050-1, is under an obligation to use the STANDARD 100 by OEKO-TEX® mark only in conjunction with products that conform with the sample initially tested. The conformity is verified by audits.

The certificate SHMO 108282 is valid until 15.12.2020

Zürich, 09.01.2020

Matz Bachmann
Managing Director

Mary Rose Egloff
Customer Service Ecology Manager

OEKO-TEX® Association | Genferstrasse 29 | P.O. Box 2008 | CH-8027 Zürich



ONE and ALL Technology in Materials

Hong Kong Science Park INCU-TECH

99% anti bacterial - anti viral - nano water repellent technology

<https://youtu.be/6L98WxB0Dco>

video explaining the technology ↗



ONE and ALL Technology in Materials

Hong Kong Science Park INCU-TECH 99% anti bacterial - anti viral technology certificate and technology award

SGS

Test Report No.: HKSL1501001896TX Date: Jan 08, 2015 Page 2 of 3

Test Results :
Assessment of Antibacterial Finishes on Textile Material (AATCC Test Method 100- 2012)
Test bacteria : Staphylococcus aureus (ATCC 6538)
Test specimen: After 20 wash sample (washing was performed by the client)

Test result

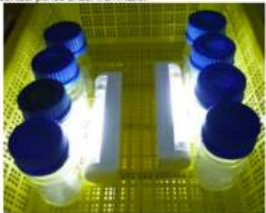
Tested Specimen	Bacteria count (colony forming unit, CFU per ml) over contact period (H)		Result: % of reduction of bacteria	Client specified requirement	Comment
	0 hour	24 hours			
After 20 wash sample	1.01×10^5	$< 1.00 \times 10^2$	>99.90%	/	/
Untreated control sample	1.00×10^6	1.53×10^6			

Note: The untreated control sample was provided by client.

(H) As per client request, illumination was provided during incubation over contact period.

Photo:

Set up for incubation over contact period under illumination



*** End of Report ***

This document is issued by the Company subject to the General Conditions of Service printed overleaf available on request or available at <http://www.sgs.com/Testing-and-Certification.aspx> and, furthermore, limited guarantee against its content and accuracy for the duration of the validity of the certificate issued by the Company. The Company is not responsible for any loss or damage caused by the use of the information only and with the exception of the Company's responsibility, it is the client's responsibility to ensure that the information is used for the intended purpose only and that the information is not used for any other purpose. The Company is not responsible for any loss or damage caused by the use of the information only and with the exception of the Company's responsibility, it is the client's responsibility to ensure that the information is used for the intended purpose only and that the information is not used for any other purpose. The Company is not responsible for any loss or damage caused by the use of the information only and with the exception of the Company's responsibility, it is the client's responsibility to ensure that the information is used for the intended purpose only and that the information is not used for any other purpose.

Other information stated in this report only refers to the samples received and each sample is not released for 30 days only.

Laboratory: SGL 401, SGL 401A, SGL 401B, SGL 401C, SGL 401D, SGL 401E, SGL 401F, SGL 401G, SGL 401H, SGL 401I, SGL 401J, SGL 401K, SGL 401L, SGL 401M, SGL 401N, SGL 401O, SGL 401P, SGL 401Q, SGL 401R, SGL 401S, SGL 401T, SGL 401U, SGL 401V, SGL 401W, SGL 401X, SGL 401Y, SGL 401Z, SGL 401AA, SGL 401AB, SGL 401AC, SGL 401AD, SGL 401AE, SGL 401AF, SGL 401AG, SGL 401AH, SGL 401AI, SGL 401AJ, SGL 401AK, SGL 401AL, SGL 401AM, SGL 401AN, SGL 401AO, SGL 401AP, SGL 401AQ, SGL 401AR, SGL 401AS, SGL 401AT, SGL 401AU, SGL 401AV, SGL 401AW, SGL 401AX, SGL 401AY, SGL 401AZ, SGL 401BA, SGL 401BB, SGL 401BC, SGL 401BD, SGL 401BE, SGL 401BF, SGL 401BG, SGL 401BH, SGL 401BI, SGL 401BJ, SGL 401BK, SGL 401BL, SGL 401BM, SGL 401BN, SGL 401BO, SGL 401BP, SGL 401BQ, SGL 401BR, SGL 401BS, SGL 401BT, SGL 401BU, SGL 401BV, SGL 401BW, SGL 401BX, SGL 401BY, SGL 401BZ, SGL 401CA, SGL 401CB, SGL 401CC, SGL 401CD, SGL 401CE, SGL 401CF, SGL 401CG, SGL 401CH, SGL 401CI, SGL 401CJ, SGL 401CK, SGL 401CL, SGL 401CM, SGL 401CN, SGL 401CO, SGL 401CP, SGL 401CQ, SGL 401CR, SGL 401CS, SGL 401CT, SGL 401CU, SGL 401CV, SGL 401CW, SGL 401CX, SGL 401CY, SGL 401CZ, SGL 401DA, SGL 401DB, SGL 401DC, SGL 401DD, SGL 401DE, SGL 401DF, SGL 401DG, SGL 401DH, SGL 401DI, SGL 401DJ, SGL 401DK, SGL 401DL, SGL 401DM, SGL 401DN, SGL 401DO, SGL 401DP, SGL 401DQ, SGL 401DR, SGL 401DS, SGL 401DT, SGL 401DU, SGL 401DV, SGL 401DW, SGL 401DX, SGL 401DY, SGL 401DZ, SGL 401EA, SGL 401EB, SGL 401EC, SGL 401ED, SGL 401EE, SGL 401EF, SGL 401EG, SGL 401EH, SGL 401EI, SGL 401EJ, SGL 401EK, SGL 401EL, SGL 401EM, SGL 401EN, SGL 401EO, SGL 401EP, SGL 401EQ, SGL 401ER, SGL 401ES, SGL 401ET, SGL 401EU, SGL 401EV, SGL 401EW, SGL 401EX, SGL 401EY, SGL 401EZ, SGL 401FA, SGL 401FB, SGL 401FC, SGL 401FD, SGL 401FE, SGL 401FF, SGL 401FG, SGL 401FH, SGL 401FI, SGL 401FJ, SGL 401FK, SGL 401FL, SGL 401FM, SGL 401FN, SGL 401FO, SGL 401FP, SGL 401FQ, SGL 401FR, SGL 401FS, SGL 401FT, SGL 401FU, SGL 401FV, SGL 401FW, SGL 401FX, SGL 401FY, SGL 401FZ, SGL 401GA, SGL 401GB, SGL 401GC, SGL 401GD, SGL 401GE, SGL 401GF, SGL 401GG, SGL 401GH, SGL 401GI, SGL 401GJ, SGL 401GK, SGL 401GL, SGL 401GM, SGL 401GN, SGL 401GO, SGL 401GP, SGL 401GQ, SGL 401GR, SGL 401GS, SGL 401GT, SGL 401GU, SGL 401GV, SGL 401GW, SGL 401GX, SGL 401GY, SGL 401GZ, SGL 401HA, SGL 401HB, SGL 401HC, SGL 401HD, SGL 401HE, SGL 401HF, SGL 401HG, SGL 401HH, SGL 401HI, SGL 401HJ, SGL 401HK, SGL 401HL, SGL 401HM, SGL 401HN, SGL 401HO, SGL 401HP, SGL 401HQ, SGL 401HR, SGL 401HS, SGL 401HT, SGL 401HU, SGL 401HV, SGL 401HW, SGL 401HX, SGL 401HY, SGL 401HZ, SGL 401IA, SGL 401IB, SGL 401IC, SGL 401ID, SGL 401IE, SGL 401IF, SGL 401IG, SGL 401IH, SGL 401II, SGL 401IJ, SGL 401IK, SGL 401IL, SGL 401IM, SGL 401IN, SGL 401IO, SGL 401IP, SGL 401IQ, SGL 401IR, SGL 401IS, SGL 401IT, SGL 401IU, SGL 401IV, SGL 401IW, SGL 401IX, SGL 401IY, SGL 401IZ, SGL 401JA, SGL 401JB, SGL 401JC, SGL 401JD, SGL 401JE, SGL 401JF, SGL 401JG, SGL 401JH, SGL 401JI, SGL 401JJ, SGL 401JK, SGL 401JL, SGL 401JM, SGL 401JN, SGL 401JO, SGL 401JP, SGL 401JQ, SGL 401JR, SGL 401JS, SGL 401JT, SGL 401JU, SGL 401JV, SGL 401JW, SGL 401JX, SGL 401JY, SGL 401JZ, SGL 401KA, SGL 401KB, SGL 401KC, SGL 401KD, SGL 401KE, SGL 401KF, SGL 401KG, SGL 401KH, SGL 401KI, SGL 401KJ, SGL 401KK, SGL 401KL, SGL 401KM, SGL 401KN, SGL 401KO, SGL 401KP, SGL 401KQ, SGL 401KR, SGL 401KS, SGL 401KT, SGL 401KU, SGL 401KV, SGL 401KW, SGL 401KX, SGL 401KY, SGL 401KZ, SGL 401LA, SGL 401LB, SGL 401LC, SGL 401LD, SGL 401LE, SGL 401LF, SGL 401LG, SGL 401LH, SGL 401LI, SGL 401LJ, SGL 401LK, SGL 401LL, SGL 401LM, SGL 401LN, SGL 401LO, SGL 401LP, SGL 401LQ, SGL 401LR, SGL 401LS, SGL 401LT, SGL 401LU, SGL 401LV, SGL 401LW, SGL 401LX, SGL 401LY, SGL 401LZ, SGL 401MA, SGL 401MB, SGL 401MC, SGL 401MD, SGL 401ME, SGL 401MF, SGL 401MG, SGL 401MH, SGL 401MI, SGL 401MJ, SGL 401MK, SGL 401ML, SGL 401MN, SGL 401MO, SGL 401MP, SGL 401MQ, SGL 401MR, SGL 401MS, SGL 401MT, SGL 401MU, SGL 401MV, SGL 401MW, SGL 401MX, SGL 401MY, SGL 401MZ, SGL 401NA, SGL 401NB, SGL 401NC, SGL 401ND, SGL 401NE, SGL 401NF, SGL 401NG, SGL 401NH, SGL 401NI, SGL 401NJ, SGL 401NK, SGL 401NL, SGL 401NM, SGL 401NN, SGL 401NO, SGL 401NP, SGL 401NQ, SGL 401NR, SGL 401NS, SGL 401NT, SGL 401NU, SGL 401NV, SGL 401NW, SGL 401NX, SGL 401NY, SGL 401NZ, SGL 401OA, SGL 401OB, SGL 401OC, SGL 401OD, SGL 401OE, SGL 401OF, SGL 401OG, SGL 401OH, SGL 401OI, SGL 401OJ, SGL 401OK, SGL 401OL, SGL 401OM, SGL 401ON, SGL 401OO, SGL 401OP, SGL 401OQ, SGL 401OR, SGL 401OS, SGL 401OT, SGL 401OU, SGL 401OV, SGL 401OW, SGL 401OX, SGL 401OY, SGL 401OZ, SGL 401PA, SGL 401PB, SGL 401PC, SGL 401PD, SGL 401PE, SGL 401PF, SGL 401PG, SGL 401PH, SGL 401PI, SGL 401PJ, SGL 401PK, SGL 401PL, SGL 401PM, SGL 401PN, SGL 401PO, SGL 401PP, SGL 401PQ, SGL 401PR, SGL 401PS, SGL 401PT, SGL 401PU, SGL 401PV, SGL 401PW, SGL 401PX, SGL 401PY, SGL 401PZ, SGL 401QA, SGL 401QB, SGL 401QC, SGL 401QD, SGL 401QE, SGL 401QF, SGL 401QG, SGL 401QH, SGL 401QI, SGL 401QJ, SGL 401QK, SGL 401QL, SGL 401QM, SGL 401QN, SGL 401QO, SGL 401QP, SGL 401QQ, SGL 401QR, SGL 401QS, SGL 401QT, SGL 401QU, SGL 401QV, SGL 401QW, SGL 401QX, SGL 401QY, SGL 401QZ, SGL 401RA, SGL 401RB, SGL 401RC, SGL 401RD, SGL 401RE, SGL 401RF, SGL 401RG, SGL 401RH, SGL 401RI, SGL 401RJ, SGL 401RK, SGL 401RL, SGL 401RM, SGL 401RN, SGL 401RO, SGL 401RP, SGL 401RQ, SGL 401RR, SGL 401RS, SGL 401RT, SGL 401RU, SGL 401RV, SGL 401RW, SGL 401RX, SGL 401RY, SGL 401RZ, SGL 401SA, SGL 401SB, SGL 401SC, SGL 401SD, SGL 401SE, SGL 401SF, SGL 401SG, SGL 401SH, SGL 401SI, SGL 401SJ, SGL 401SK, SGL 401SL, SGL 401SM, SGL 401SN, SGL 401SO, SGL 401SP, SGL 401SQ, SGL 401SR, SGL 401SS, SGL 401ST, SGL 401SU, SGL 401SV, SGL 401SW, SGL 401SX, SGL 401SY, SGL 401SZ, SGL 401TA, SGL 401TB, SGL 401TC, SGL 401TD, SGL 401TE, SGL 401TF, SGL 401TG, SGL 401TH, SGL 401TI, SGL 401TJ, SGL 401TK, SGL 401TL, SGL 401TM, SGL 401TN, SGL 401TO, SGL 401TP, SGL 401TQ, SGL 401TR, SGL 401TS, SGL 401TT, SGL 401TU, SGL 401TV, SGL 401TW, SGL 401TX, SGL 401TY, SGL 401TZ, SGL 401UA, SGL 401UB, SGL 401UC, SGL 401UD, SGL 401UE, SGL 401UF, SGL 401UG, SGL 401UH, SGL 401UI, SGL 401UJ, SGL 401UK, SGL 401UL, SGL 401UM, SGL 401UN, SGL 401UO, SGL 401UP, SGL 401UQ, SGL 401UR, SGL 401US, SGL 401UT, SGL 401UU, SGL 401UV, SGL 401UW, SGL 401UX, SGL 401UY, SGL 401UZ, SGL 401VA, SGL 401VB, SGL 401VC, SGL 401VD, SGL 401VE, SGL 401VF, SGL 401VG, SGL 401VH, SGL 401VI, SGL 401VJ, SGL 401VK, SGL 401VL, SGL 401VM, SGL 401VN, SGL 401VO, SGL 401VP, SGL 401VQ, SGL 401VR, SGL 401VS, SGL 401VT, SGL 401VU, SGL 401VV, SGL 401VW, SGL 401VX, SGL 401VY, SGL 401VZ, SGL 401WA, SGL 401WB, SGL 401WC, SGL 401WD, SGL 401WE, SGL 401WF, SGL 401WG, SGL 401WH, SGL 401WI, SGL 401WJ, SGL 401WK, SGL 401WL, SGL 401WM, SGL 401WN, SGL 401WO, SGL 401WP, SGL 401WQ, SGL 401WR, SGL 401WS, SGL 401WT, SGL 401WU, SGL 401WV, SGL 401WW, SGL 401WX, SGL 401WY, SGL 401WZ, SGL 401XA, SGL 401XB, SGL 401XC, SGL 401XD, SGL 401XE, SGL 401XF, SGL 401XG, SGL 401XH, SGL 401XI, SGL 401XJ, SGL 401XK, SGL 401XL, SGL 401XM, SGL 401XN, SGL 401XO, SGL 401XP, SGL 401XQ, SGL 401XR, SGL 401XS, SGL 401XT, SGL 401XU, SGL 401XV, SGL 401XW, SGL 401XX, SGL 401XY, SGL 401XZ, SGL 401YA, SGL 401YB, SGL 401YC, SGL 401YD, SGL 401YE, SGL 401YF, SGL 401YG, SGL 401YH, SGL 401YI, SGL 401YJ, SGL 401YK, SGL 401YL, SGL 401YM, SGL 401YN, SGL 401YO, SGL 401YP, SGL 401YQ, SGL 401YR, SGL 401YS, SGL 401YT, SGL 401YU, SGL 401YV, SGL 401YW, SGL 401YX, SGL 401YY, SGL 401YZ, SGL 401ZA, SGL 401ZB, SGL 401ZC, SGL 401ZD, SGL 401ZE, SGL 401ZF, SGL 401ZG, SGL 401ZH, SGL 401ZI, SGL 401ZJ, SGL 401ZK, SGL 401ZL, SGL 401ZM, SGL 401ZN, SGL 401ZO, SGL 401ZP, SGL 401ZQ, SGL 401ZR, SGL 401ZS, SGL 401ZT, SGL 401ZU, SGL 401ZV, SGL 401ZW, SGL 401ZX, SGL 401ZY, SGL 401ZZ.

DIPLÔME

SALON INTERNATIONAL DES INVENTIONS GENÈVE

Après examen, le Jury International a décidé
de remettre à: Prof. John H. XIN, Dr. Walid DAQUD et Dr. Liu YUYANG
Miss. Qi Kai HONG et Miss Chen XIANQIONG
pour l'invention: Vêtement autonettoyant qui repousse la saleté

UNE MEDAILLE D'OR Genève, le 7 avril 2006

(Signature) La Président du Jury

(Signature) Le Président du Comité d'Organisation du Salon

Brand Introduction

A N N I E L I N G

Timeless with a Twist

Driven by the desire to unite fashion and craftsmanship with technology elements, designer Annie Ling started her own collection in 2015.

Inspired by a new age of active living and cutting-edge textile innovations, her collections are committed to designing enduring clothing that supports wellbeing.

Annie integrates fun and unexpected details with practical technology elements into the designs. These unique combination differentiate her from other clothing in the market. Annie's fashion clothing are effortlessly stylish, highly versatile and wearable every day.

Mission

A N N I E L I N G

The collection ONE and ALL combines
technology inspired elements
focusing in eclectic timeless designs

**offer freshness and practical ideas
to improve upon traditional clothing**



new clothing experience

Designer Biography

A N N I E L I N G

Designer Annie Ling sees fashion as a powerful form of personal expression. She studied fashion design in high school in Vancouver before continuing with Fashion Design and Technology at Kwantlen University College, Canada. After obtaining a master's degree in business administration from the university of Leicester in the United Kingdom, she launched her collection in 2016.

She likes simple designs with unexpected details. The quality of such elements is often reflected on her work. She designs for people with a lifestyle, who are self-assured, out-going and young at heart.

