

GROUND



Product fully developed by Stella.

4 powers for skewers and in ground luminaires, 3W, 5.5W, 11W and 20W.



Versions with and without grid.









Exclusive installation box with orbital movement.

Color temperature 3000K.



GROUND

In ground luminaires								
Parameters								
Power (W)	3W	3W	5,5W	5,5W	11W	11W	20W	20W

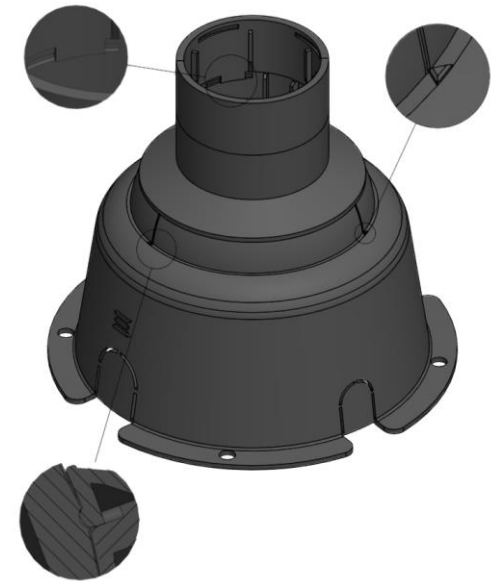
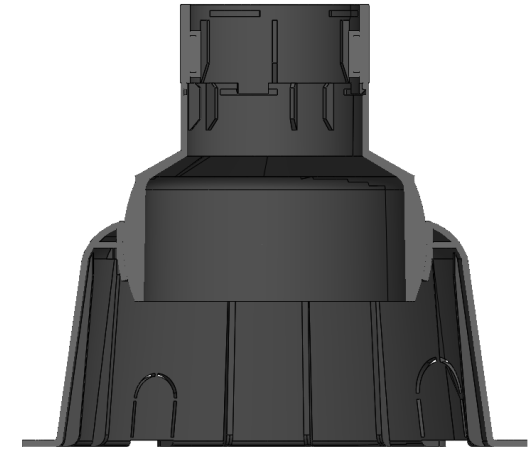
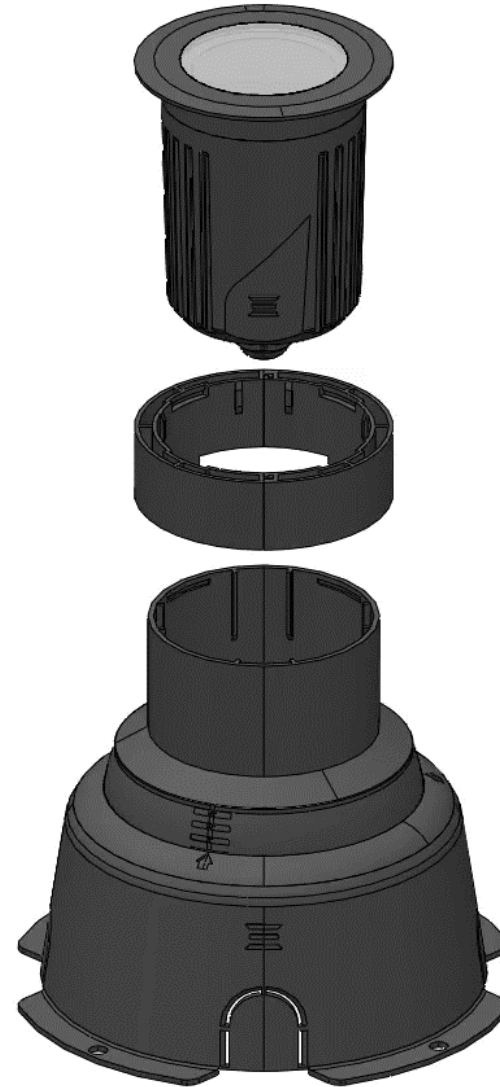
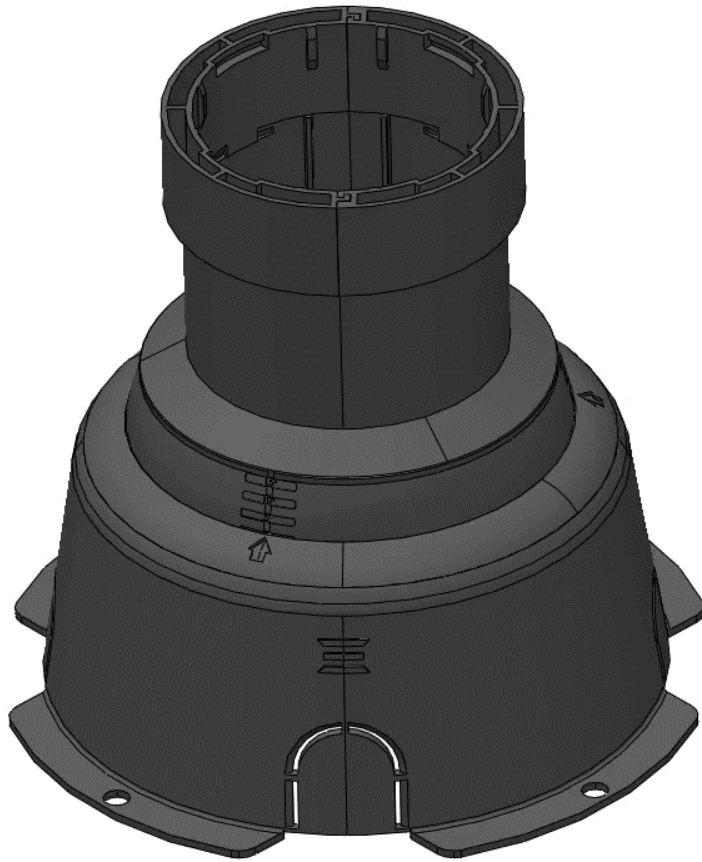
Ground Skewers								
Parameters								
Power (W)	3W	3W	5,5W	5,5W	11W	11W	20W	20W



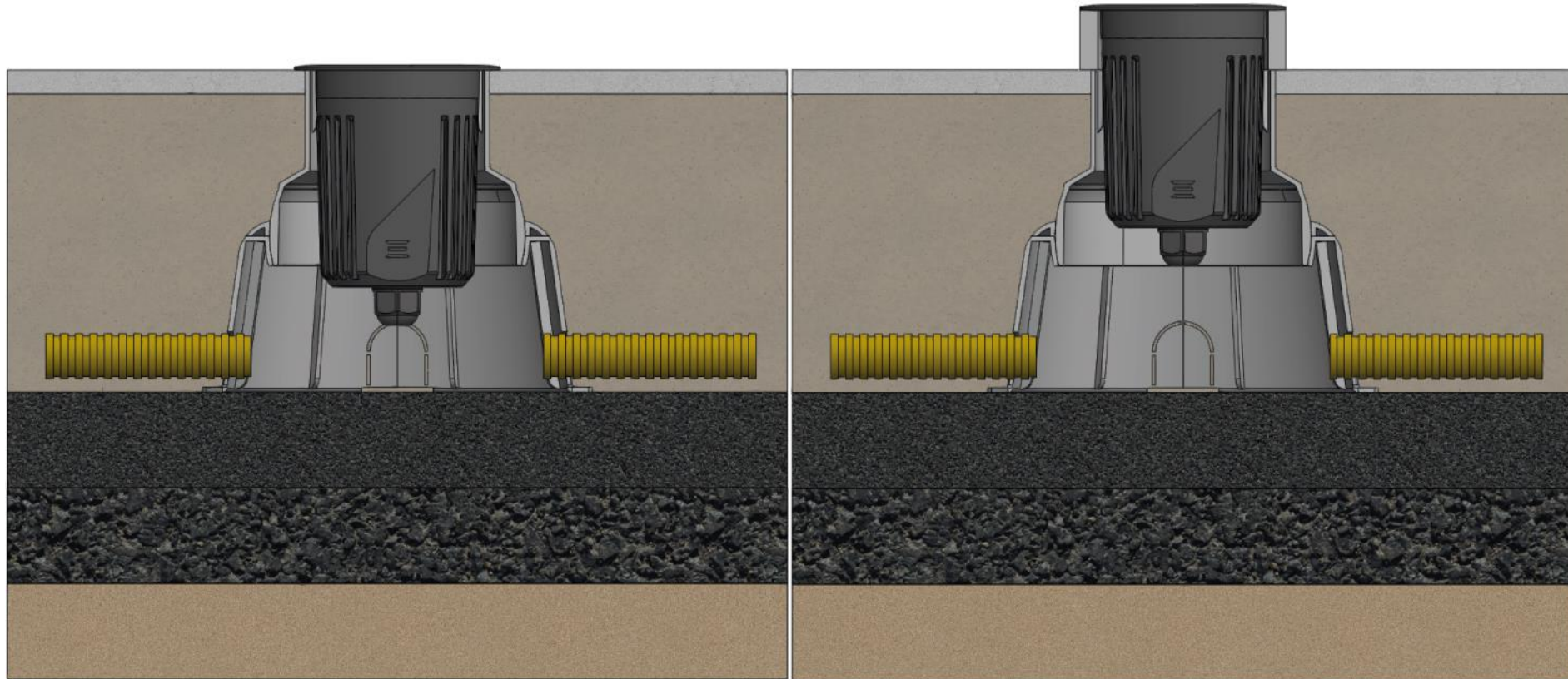
GROUND INSTALLATION BOX

15° INCLINATION

360° ROTATION



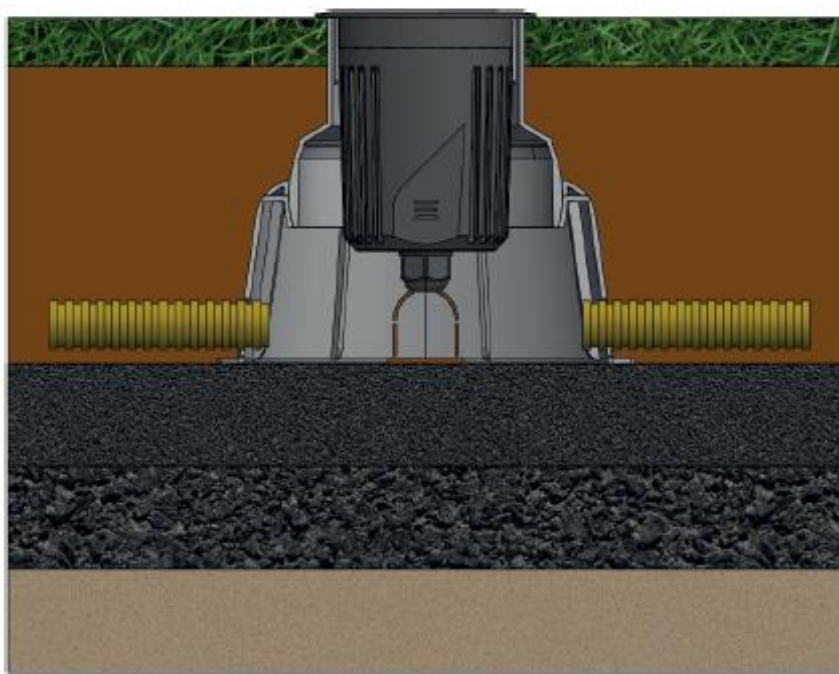
GROUND INSTALLATION BOX



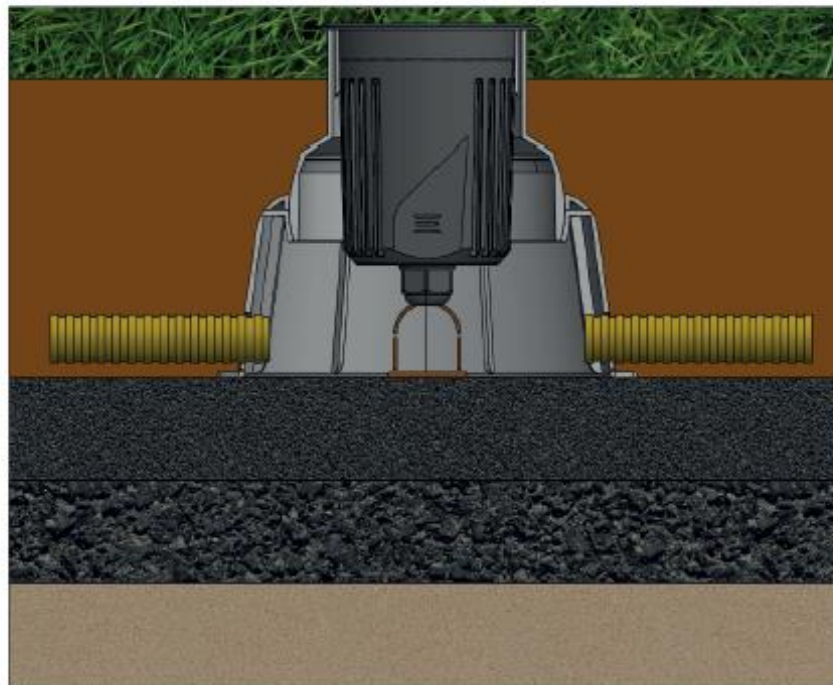
Flush with the floor

Lifting ring

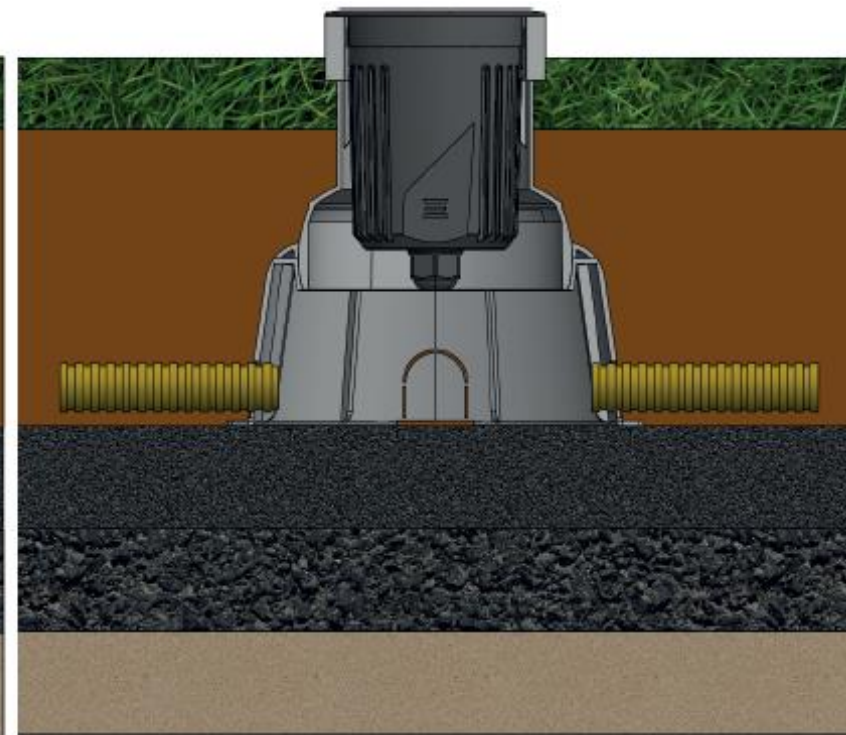
GROUND INSTALLATION BOX



Installation with vegetation at or below the light source



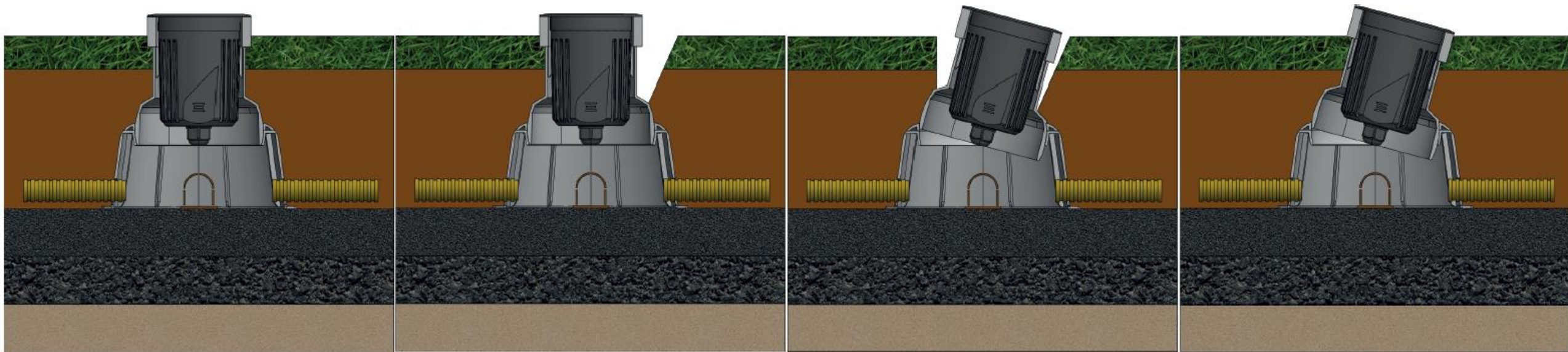
Vegetation grew blocking the light source



Lifting ring to prevent vegetation from blocking light from the luminaire without dismantling the electrical connection



GROUND INSTALLATION BOX



Installation in
Normal Position

Adjustment of the direction of
the light in relation to the
target to be illuminated:
1. Relief on the ground

2. Tilt the orbital installation
box directing the light
beam as desired

3. Finishing after redirecting
the light beam. In this case at
the 15° position

