



FOR HER

SPRING SUMMER 2023

STEPHANIE YU-HSUAN CHEN

"Soft and delicate on the outside.
On the inside she holds passion, strong and untouchable.
A sophisticated warrior."

SOFT, GENTLE, WITH STRENGTH



FLUID



BOLD



EASE



SOPHISTICATED

SHAPE EXPLORATIONS
THROUGH PHOTOGRAPHY

FEMININE BODY



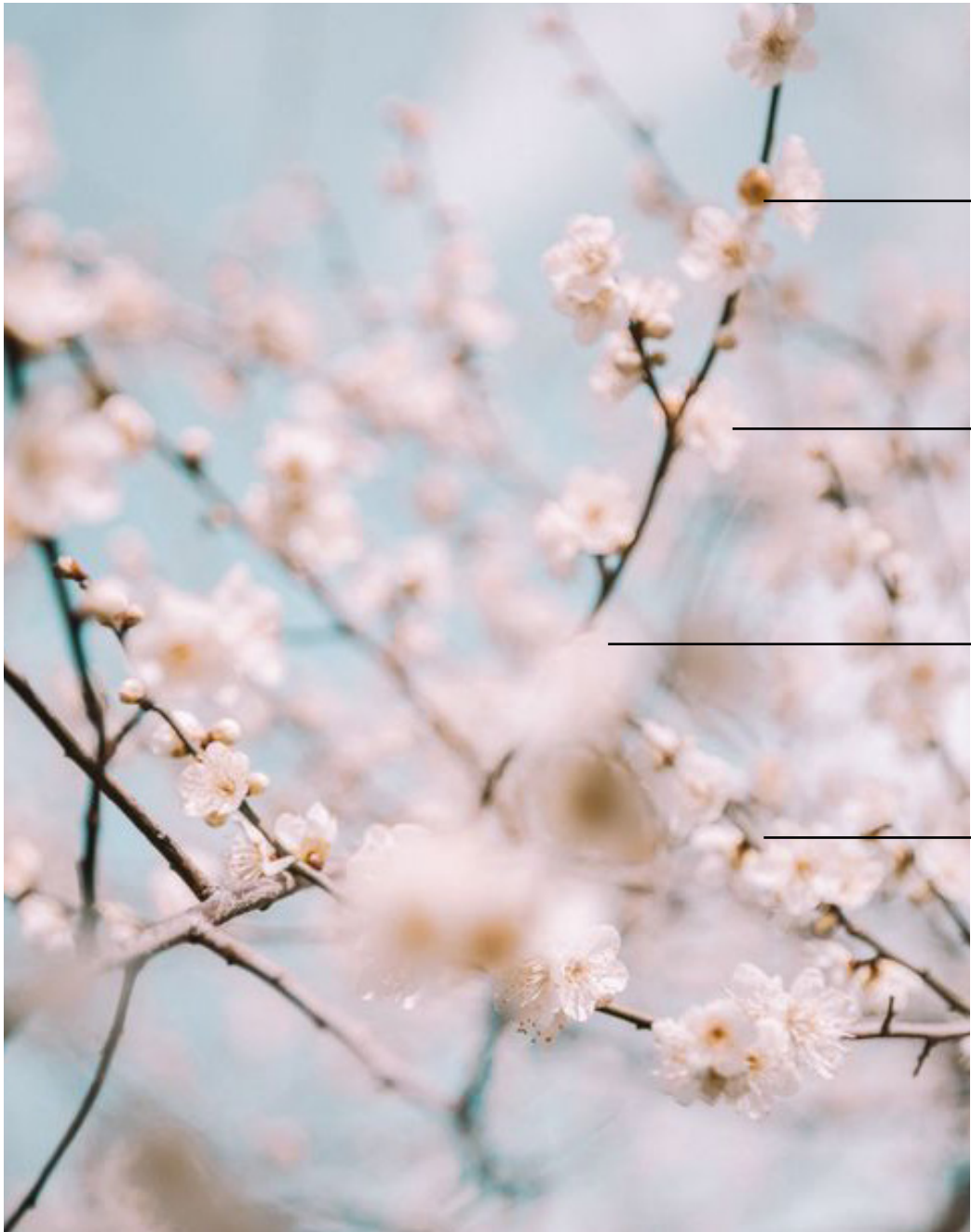


SHAPE EXPLORATIONS
THROUGH PHOTOGRAPHY

ORGANIC LINE THROUGH NATURE



COLOR PALETTE RESEARCH



Taiwanese national flower plum blossom:
a symbol of **resilience**



PROCESS EVOLUTION

LOOK 1

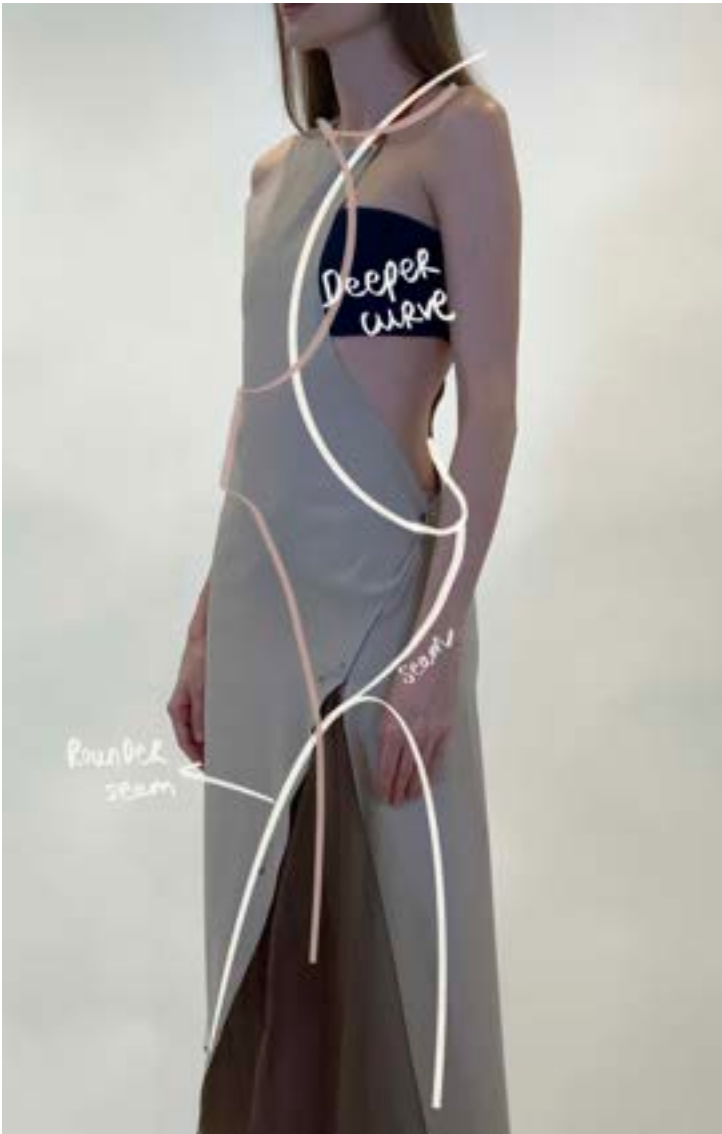
CORA
"PURITY & INNOCENCE"



ELEMENT - ONE SEAM



PROTOTYPE 1



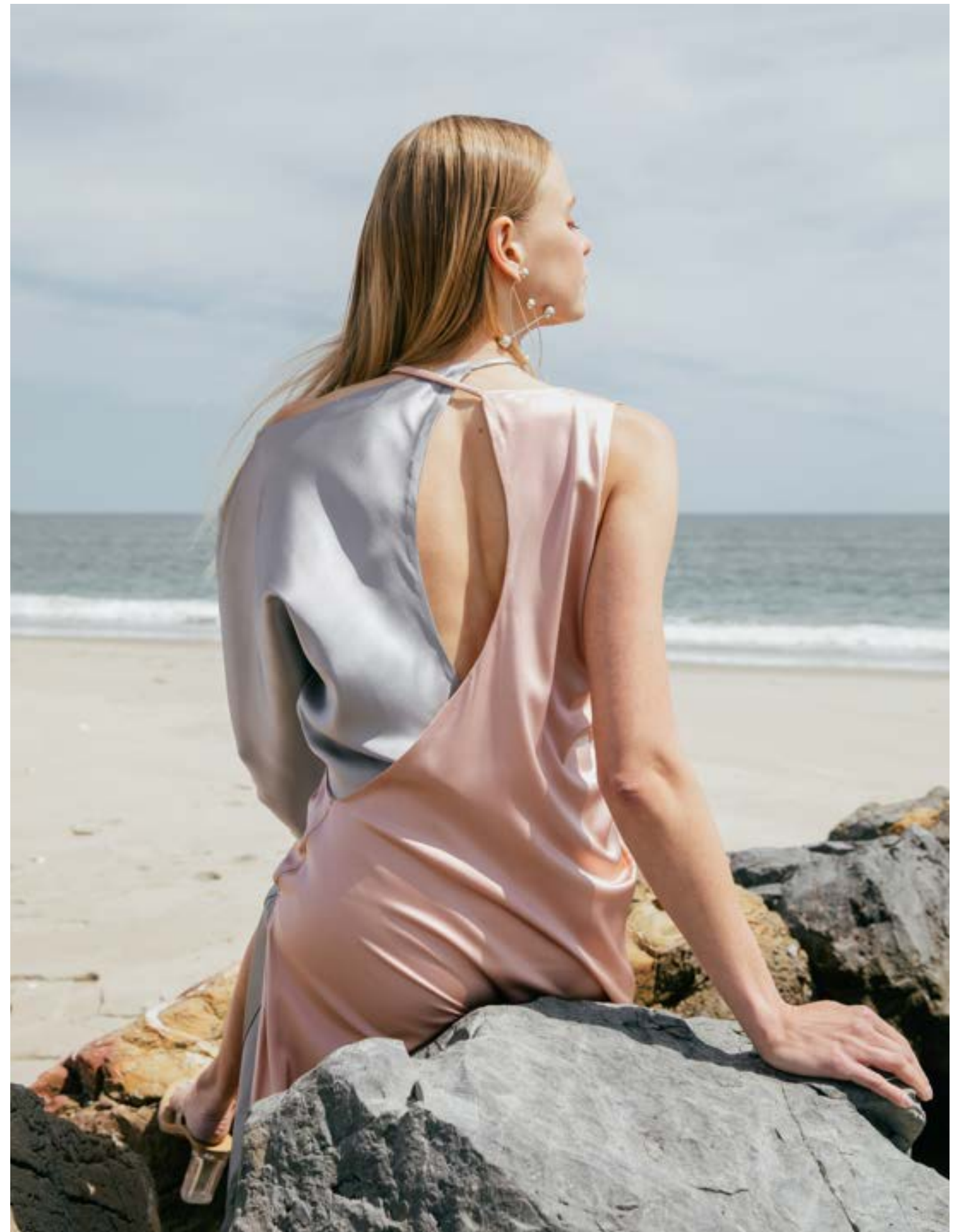
PROTOTYPE 2



PROTOTYPE 3







LOOK 2

HELENA
"SHINING LIGHT"



ELEMENT - CLEAN
CUT-OUT



PROTOTYPE 1



PROTOTYPE 2



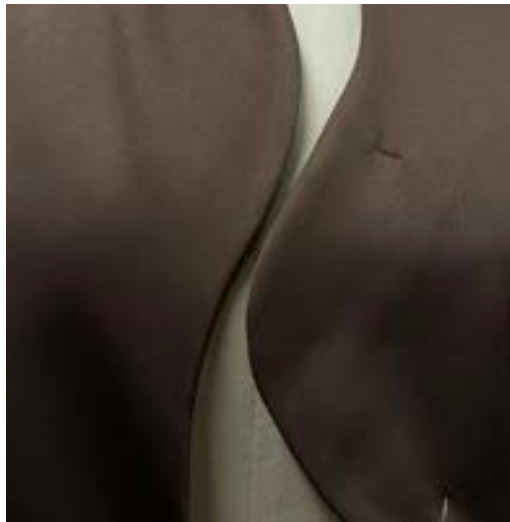
PROTOTYPE 3





LOOK 3

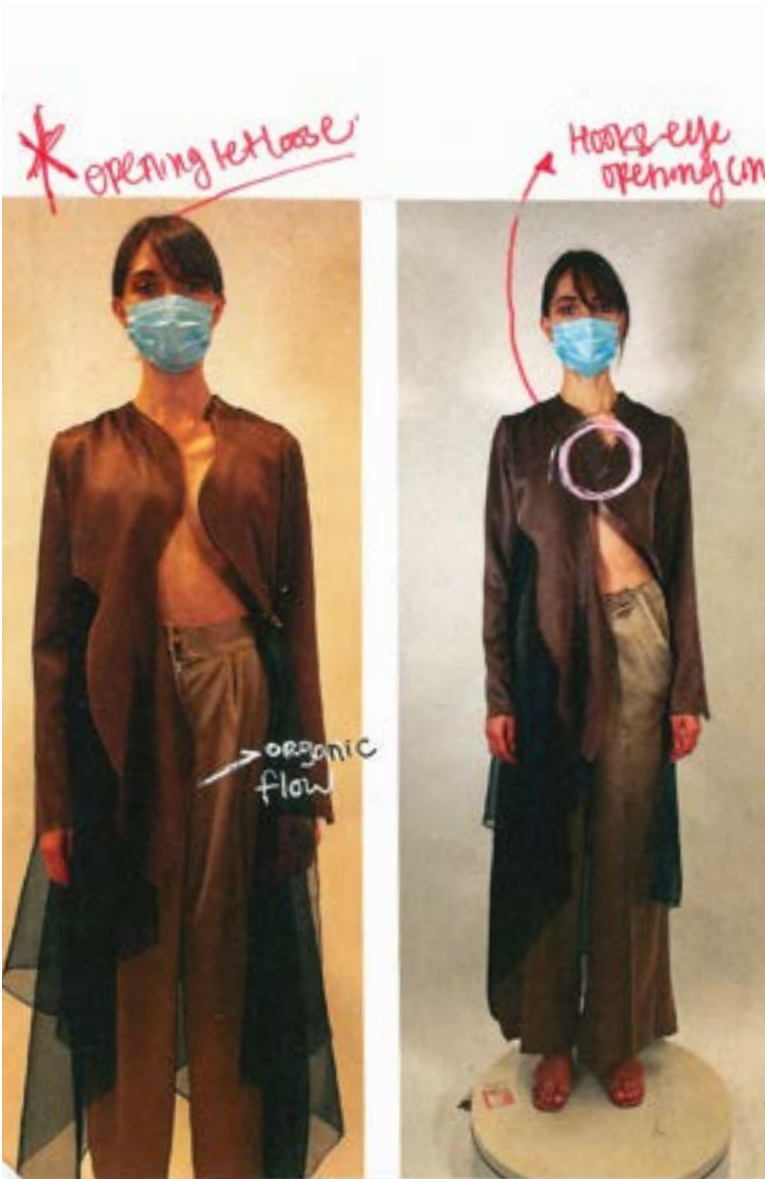
RHEA
"A FLOWING STREAM"



ELEMENT - CURVED
NECKLINE



COMBINING REGULAR
TAILORED JACKET
PATTERN WITH SOFT
TAILORING NECKLINE



PROTOTYPE 1



PROTOTYPE 2



PROTOTYPE 2 FOR PANTS





SACHH

LOOK 4

APHRODITE
APHRO = "FOAM"



INSERT "INTERSECT"
ELEMENT



PROTOTYPE 1



PROTOTYPE 2



PROTOTYPE 3





LOOK 5

BIANCA
"WHITE & PURE"



ELEMENT - CURVE
SLIT NECKLINE



SILK ORGANZA
FLOW



PROTOTYPE 1



PROTOTYPE 2



PROTOTYPE 3



PROTOTYPE 4





LOOK 6

CASSANDRA

“MAN’S DEFENDER, WARRIOR”



ELEMENT - CAFTAN



PROTOTYPE 1



PROTOTYPE 2



PROTOTYPE 3



PROTOTYPE 4







LOOK 7

GORG
"GRIM & FIERCE"



ELEMENT- ONE SEAM
AROUND BODY



PROTOTYPE 1



ADD DEPTH INTO SKIRT SIDE -
MAKE INTO A JUMPSUIT



PROTOTYPE 3



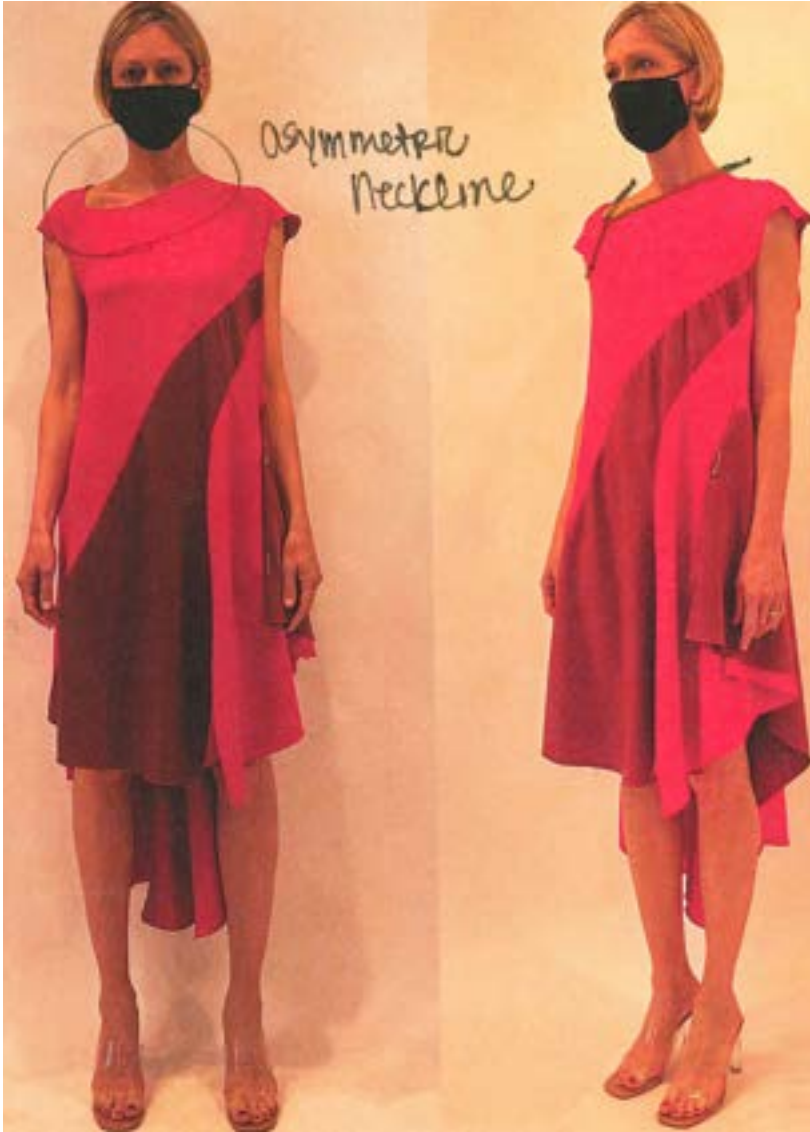


LOOK 8

ATHENA
"WISDOM"



ELEMENT -
ASYMMETRICAL
NECKLINE



PROTOTYPE 1



PROTOTYPE 2



ELEVATED NECKLINE



PROTOTYPE 3





COLLECTION LINEUP



