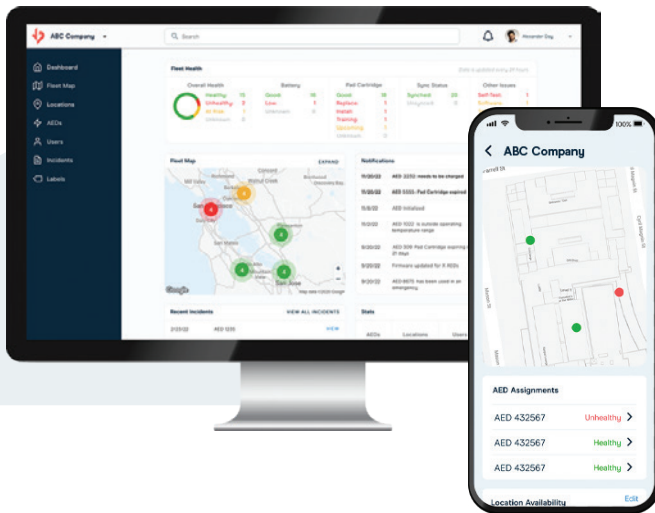


# REALConnect™

## AED Program Management

Finally, REAL AED Remote Monitoring



The REALConnect Platform uses daily wireless monitoring to provide AED managers with complete visibility of their fleet of devices. Its quick notifications help save time and money while providing unparalleled program visibility.

Many of today's AEDs require manual maintenance, making management expensive, time-consuming, and inaccurate. Even the most well-run programs require tremendous manual effort, costing organizations countless hours and dollars to ensure data integrity.

However, with Avive's REALConnect Platform, owning, using, and managing AEDs is simplified. Whether you have one for your home or one-thousand for your business, the Avive REALConnect helps with compliance and provides peace of mind.

## The REALConnect Platform gives you access to:

### 01 EverCharge™ Battery

Your Connect AED is capable of delivering therapy for up to 8.5 months and powering the screen and connectivity for up to 5 months, depending on usage, network conditions, and charging strategy. Receive daily battery status updates for every AED in your fleet, wirelessly, on your REALConnect Platform. Know the battery life of your device whether you're 50 feet away or 500 miles away.

---

### 02 Daily Pad Cartridge Condition Checks

Get daily Avive AED Pad Cartridge functional status updates, easy access to expiration dates and replacement options.

---

### 03 Daily AED GPS Location Tracking

With GPS Tracking, you will know where your AED is located. This feature allows you to see where your AED is so you know your facilities are protected.

---

### 04 Lost Mode™

With the REALConnect Platform, you can enable Lost Mode to help track down your Avive Connect AED if it is misplaced or stolen.

---

### 05 Monitoring & Custom Labels

The REALConnect Platform allows you to easily customize your settings and create labels to manage your fleet of AEDs. Get notifications to be informed of the health status of your AEDs – know whether or not an AED fails a self-test, a device gets too cold or too hot, or even if it goes missing.

---

### 06 Software Updates

Just like most of the technology we use today, the Avive Connect AED may require occasional software updates. Unlike many AEDs that require manual, in-person updates on a unit-by-unit basis, the Avive Connect AED can receive updates from the cloud, just like a smartphone.