

Product Project Information

Purpose of the project:

To design and develop a special mattress product to show traditional aesthetics and combine with the latest innovation

Product information link:

<https://www.emma-sleep.cn/html/domestic/17231.html>

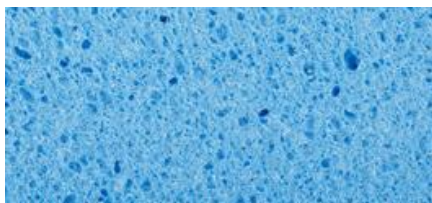
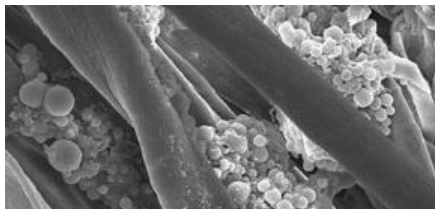
Project design brief:

The mattress design combines both the European Classic Aesthetics design with the modern sleep research and development features to bring customers special feeling and experience of perfect sleep. On one hand, the surface design shows the pattern of the dome on the Grand Palace roof with laurel and iris, which represents art of European elegance and refinement from Medieval period. On the other hand, the internal special design of three functional layers with outstanding features of sleep research and development also provide perfect sleep experience to customers. First, the ergonomics body supporting layer is a kind of system consists of thousands of “thumb coil”, which can provide precise support to each part of your body with special feature of sense and response. No matter what kind of your sleeping posture, it can fit it quickly. Secondly, the innovative material designed and used in the comfort layer are different from tradition. Those material from scientific companies can not only offer super comfort, but also can control temperature and moisture to create a perfect sleep environment, so to improve sleep quality. Last, the design of border protection system can ensure stability of the mattress to reduce sway and disturbance during sleep. Overall, it’s a perfect design combines classics aesthetics with the latest innovative research and development.

Product Image:



Innovative material:





Thumb coil precise supporting system

