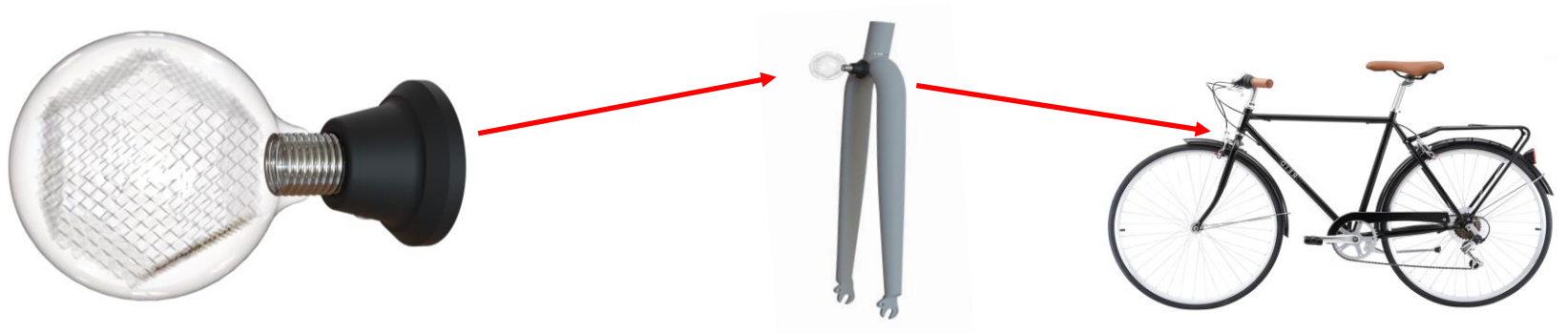
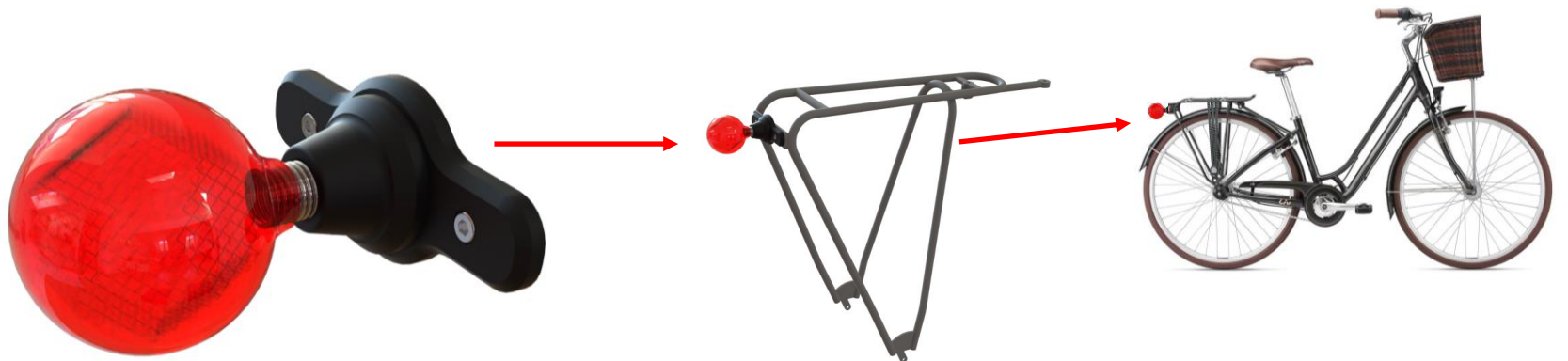
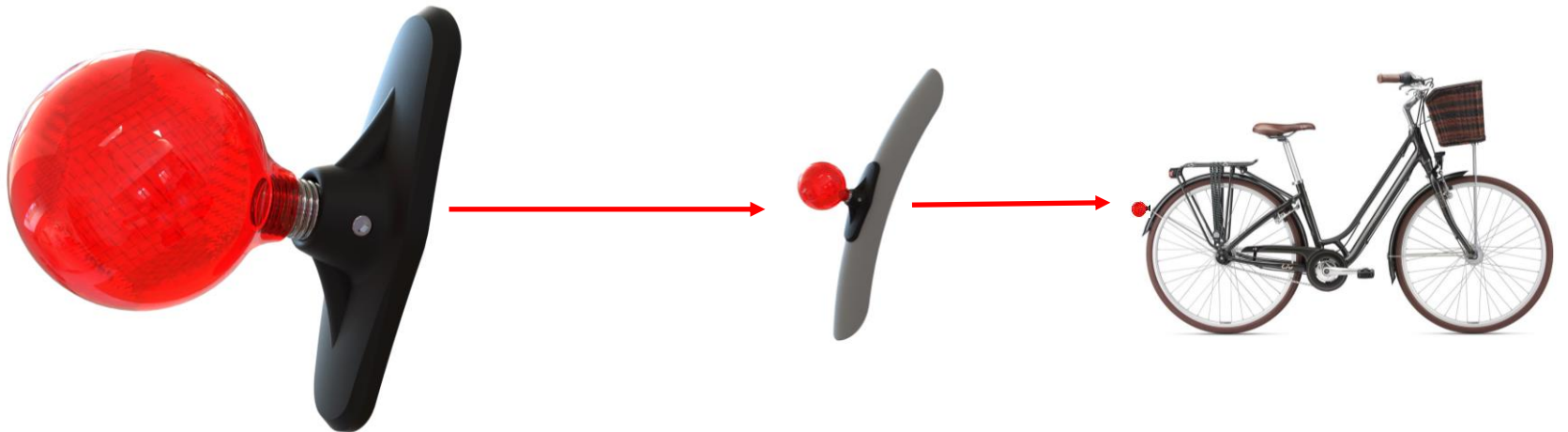
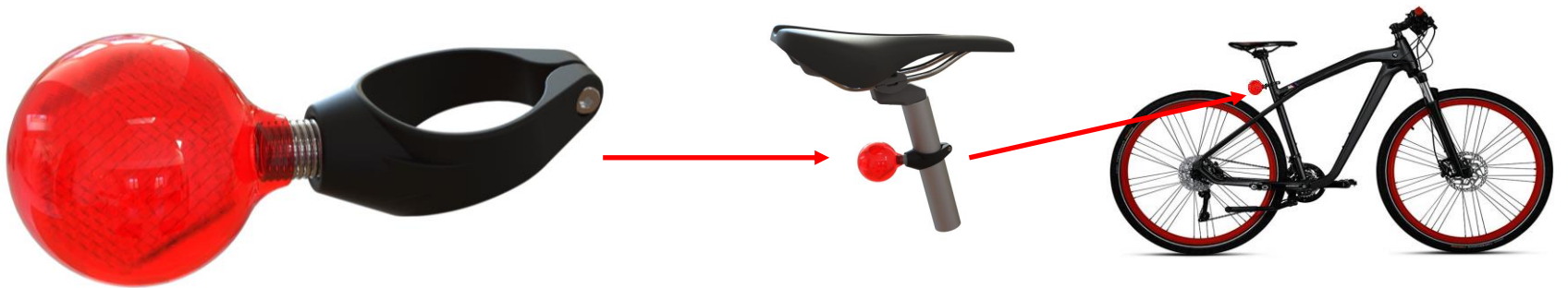


---

# INTRODUCING THE WORLDS 1<sup>ST</sup> 360° BICYCLE SAFETY REFLECTOR

---

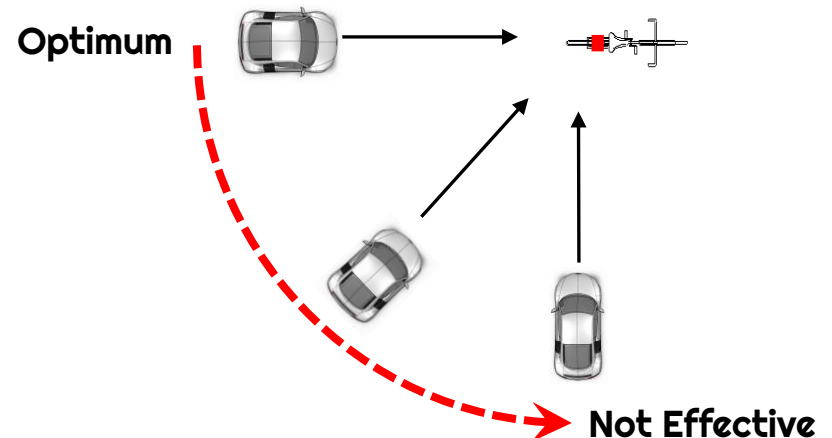


## Limitations Of Existing Reflector Design

- Constrained By A Flat Surface Profile Which Is Only Effective When Viewed Directly From Behind.

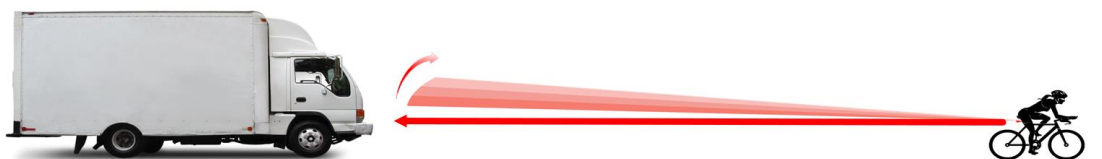
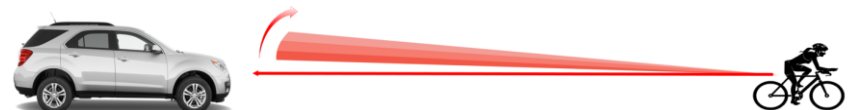


- The **Safety** Of The Cyclist Is Compromised For Changes In The Vehicle **Approach Angle**.



Optimum -----> Not Effective

- Reflectivity Is **Minimised** For Increases In The **Observation Height** Of The Approach Vehicle.

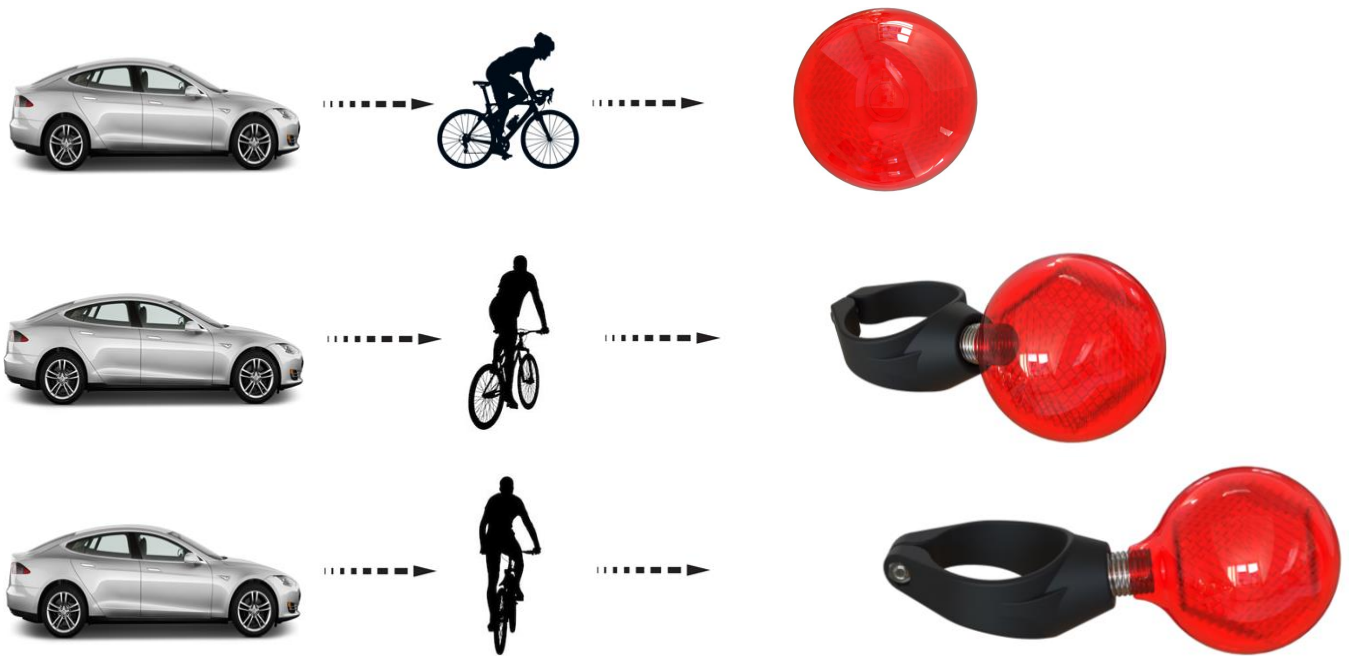


## Solution



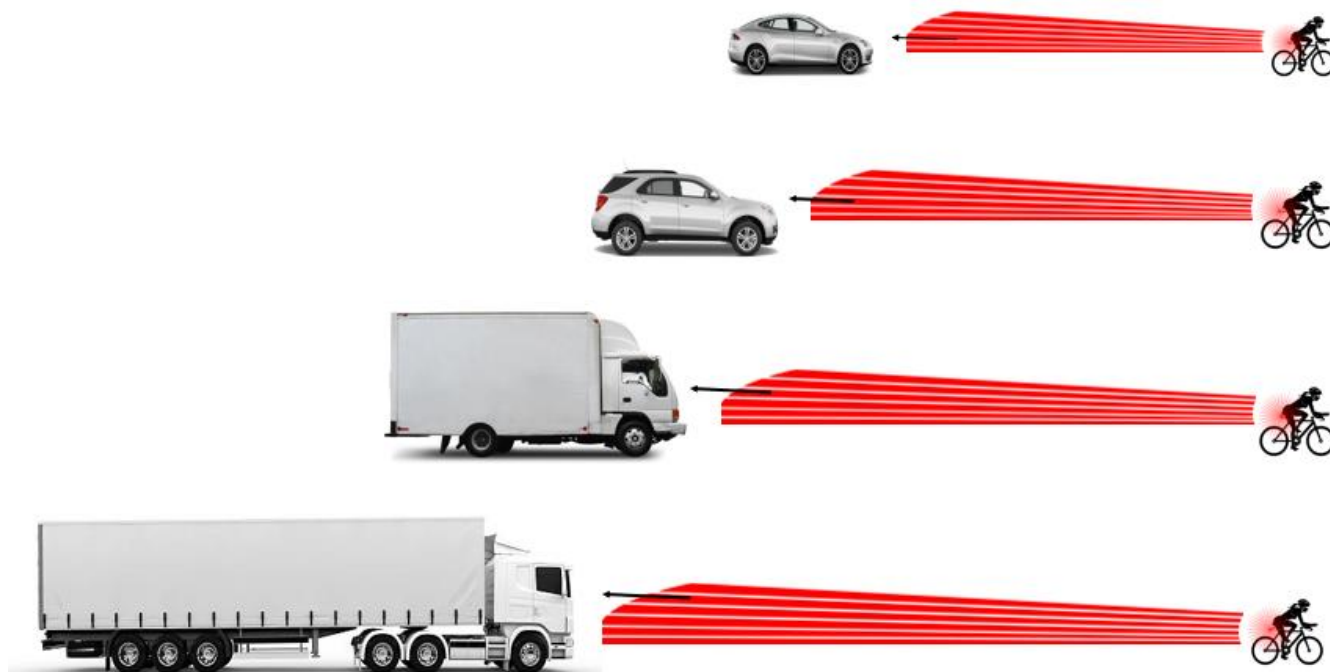
### Improved Feature : Approach Angle

- Reflectivity Is Optimum For All Variations In The **Approach Angle** Of The Vehicle.



### Improved Feature : Observation Height

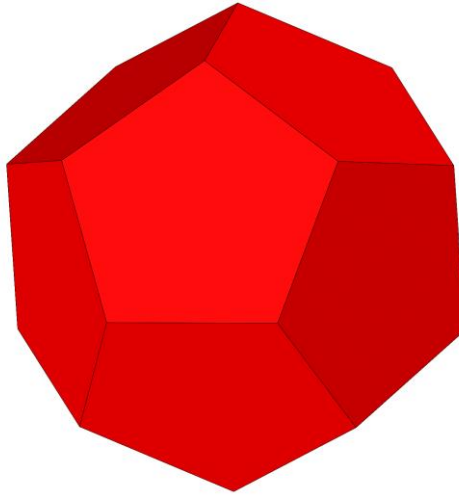
- Reflectivity Is Optimum For All Variations In The **Observation Height** Of The Vehicle.





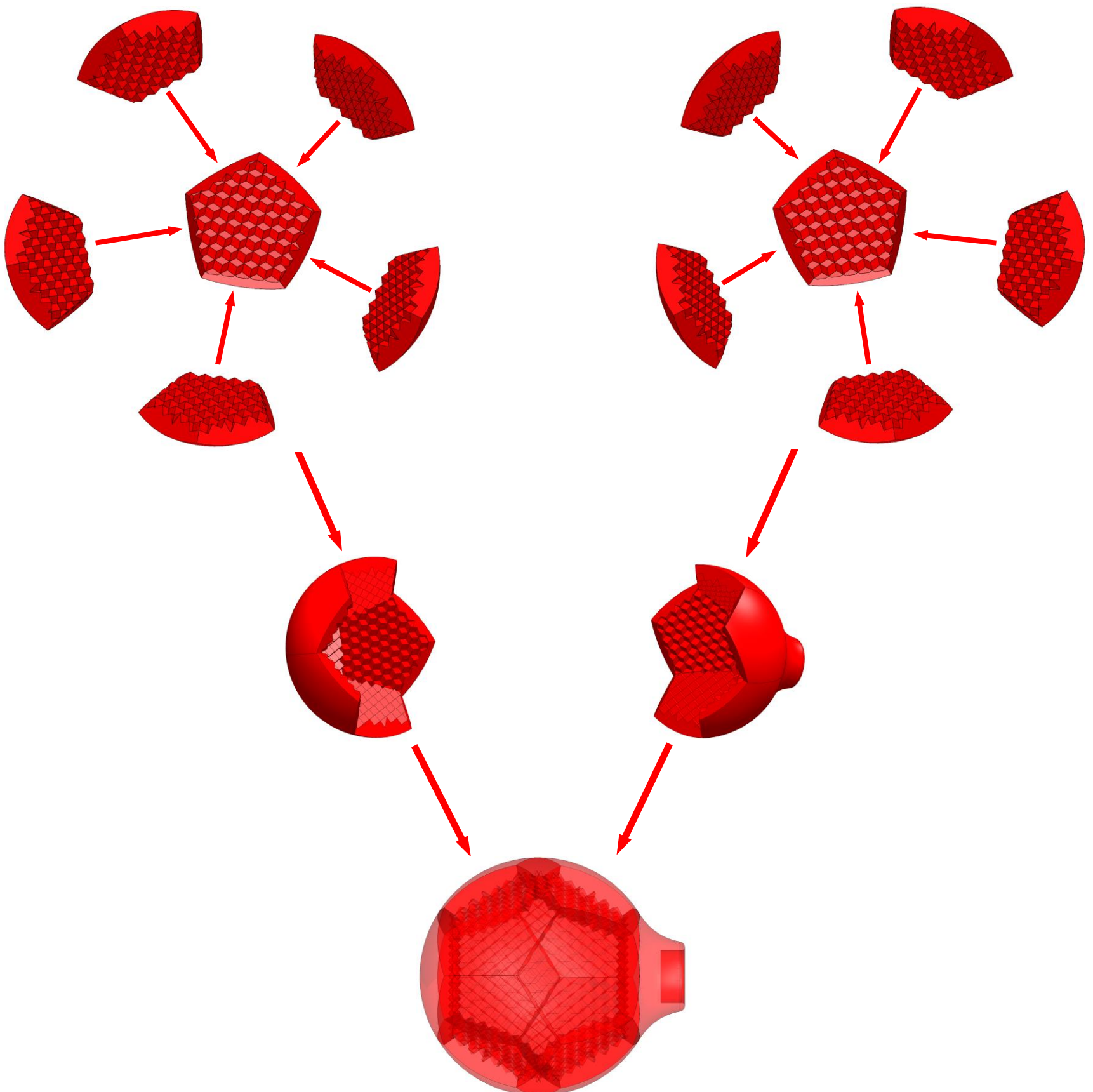
---

## Unique Feature : 360° Polyhedron Inner Profile



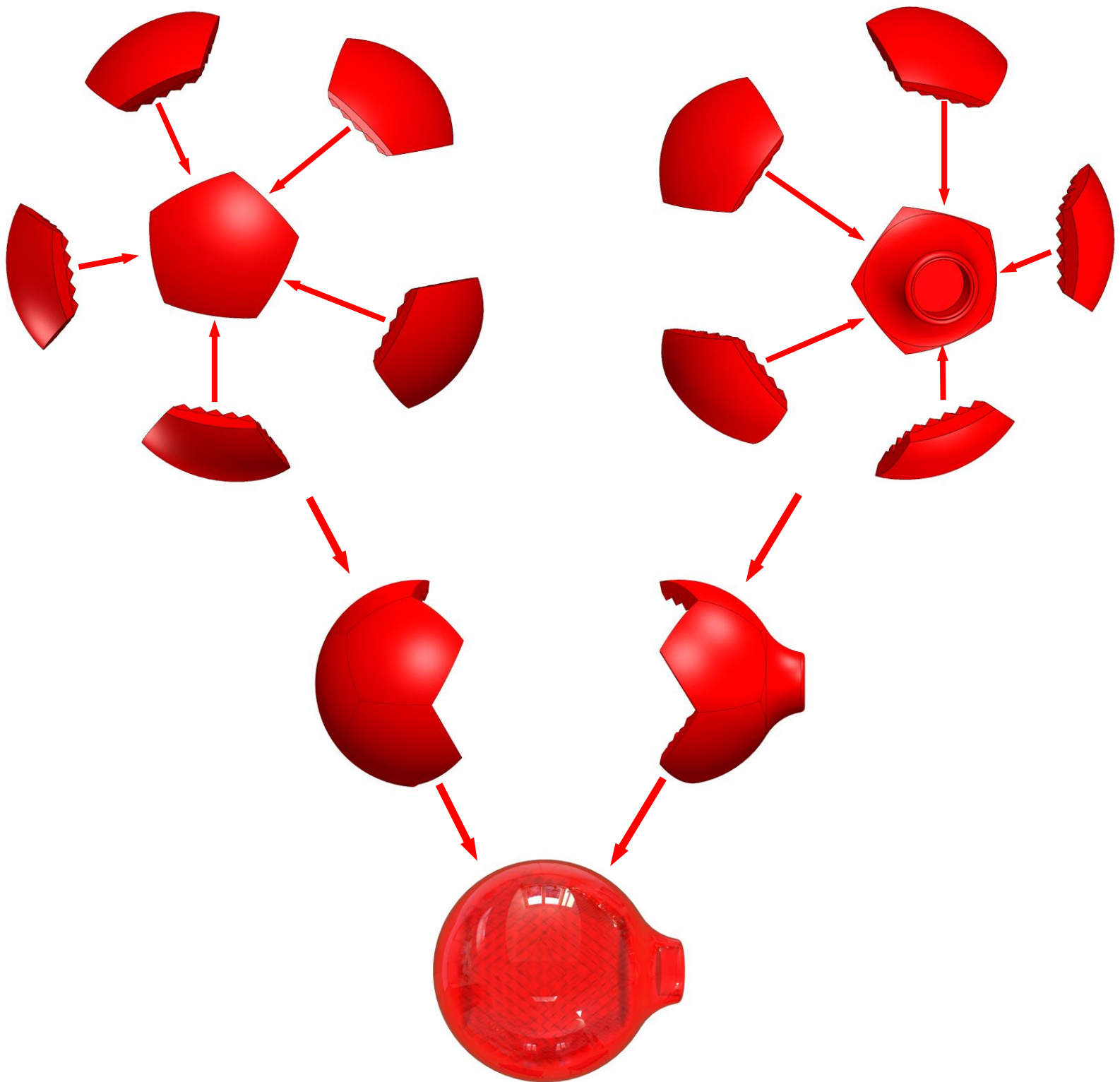
---

## Unique Feature : Corner Cube Retro Reflector On Inner Profile



---

## Unique Feature : 360° Contoured Outer



---

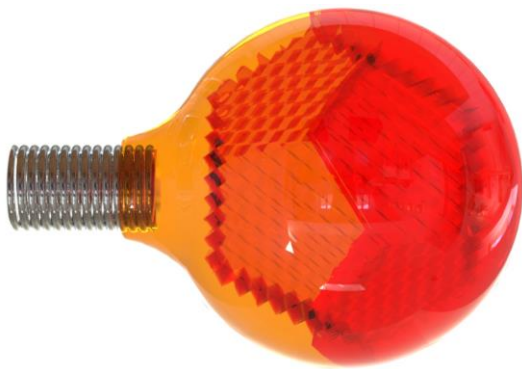
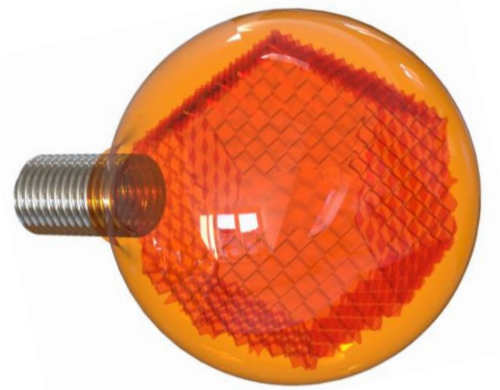
## Unique Feature : Over Molded Outer Contour

- Propagates Light Onto All Indirect Surfaces.
- Illuminates All Surfaces Simultaneously.
- Magnifies Inner Profile.
- Prevents Water Ingress
- Over Mold Securely Holds Spring In Final Position



---

**Unique Feature : Can Be Constructed In All Colour Combinations**





---

## Unique Feature : Spring Mount

- Spring Utilizes Cyclist Movement To Oscillate Reflector.



- Oscillation Magnifies The Observed Reflected Area.
- Motion captures driver attention and enhances awareness.

---

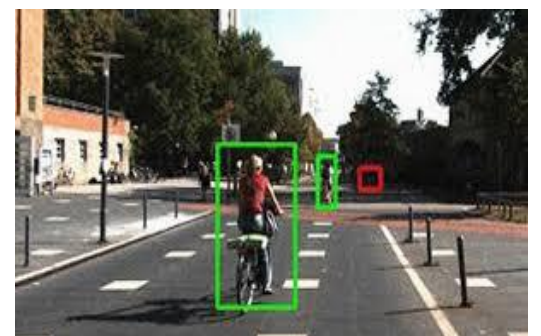
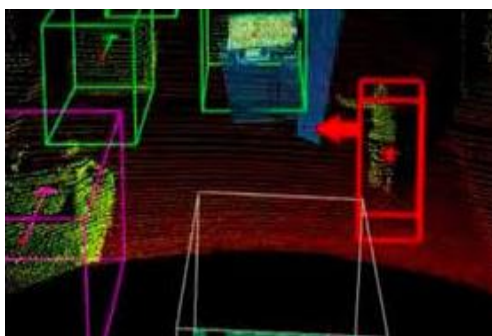
## Unique Feature : Detection By Autonomous Vehicle Monitoring

### Oscillatory Motion Enhances Detection By Autonomous Vehicles

- Ultrasonic Monitoring (Passive Proximity Sensors)
- Lidar (Light Detection & Ranging)
- Radar (Radio Detection & Ranging)

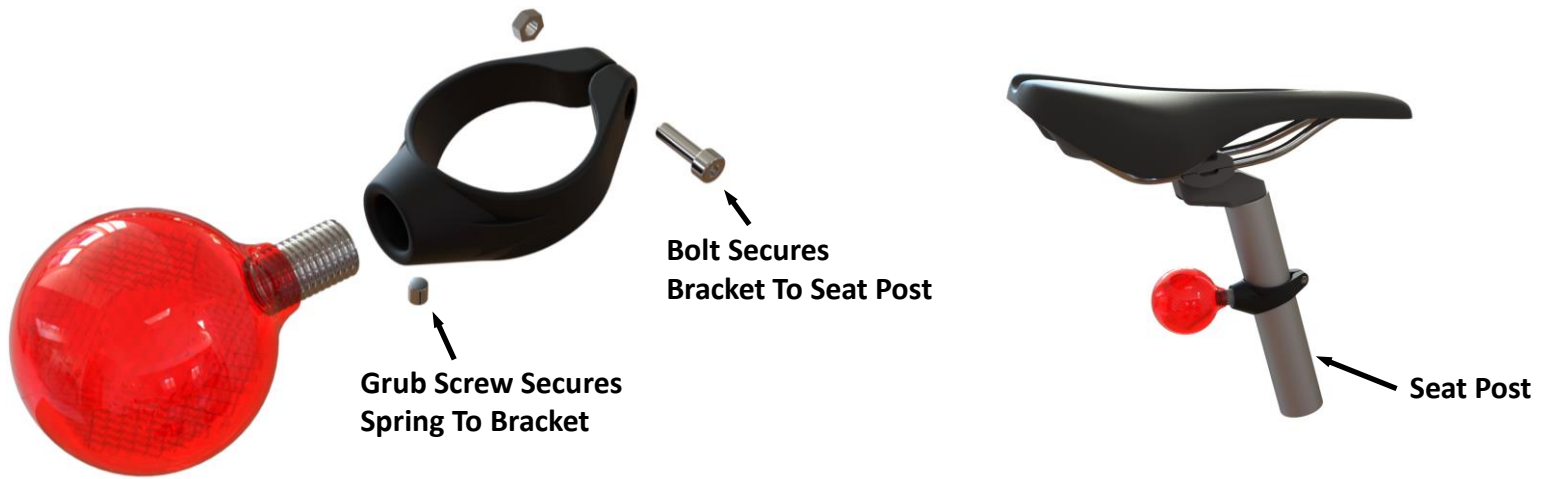
### Compliments Sensory Devices

- Magnifies Feature Recognition
- Optimises Motion Detection
- Enhanced Safety



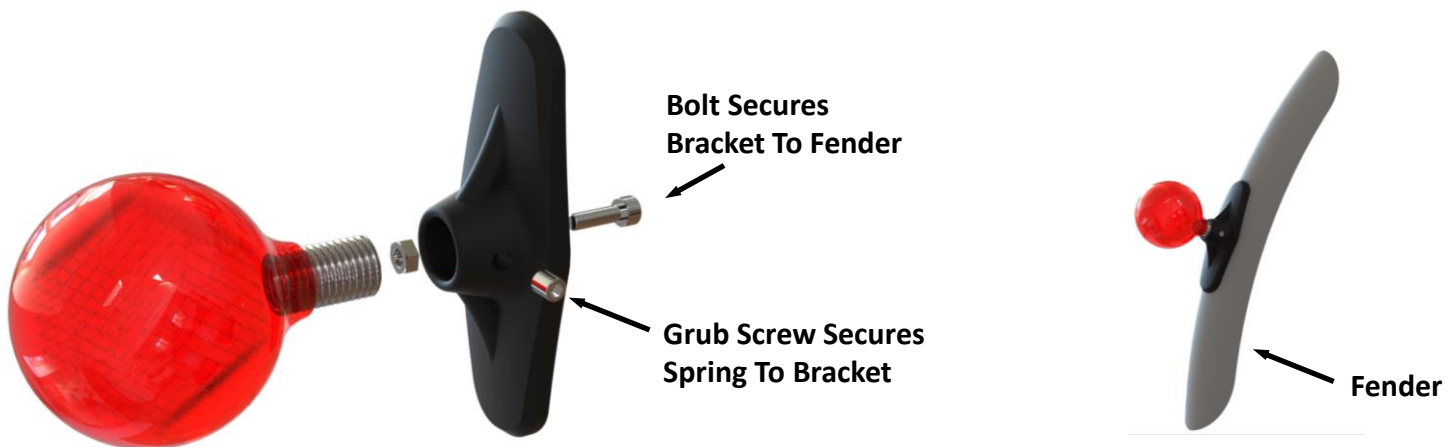
---

## Mount : Seat Post



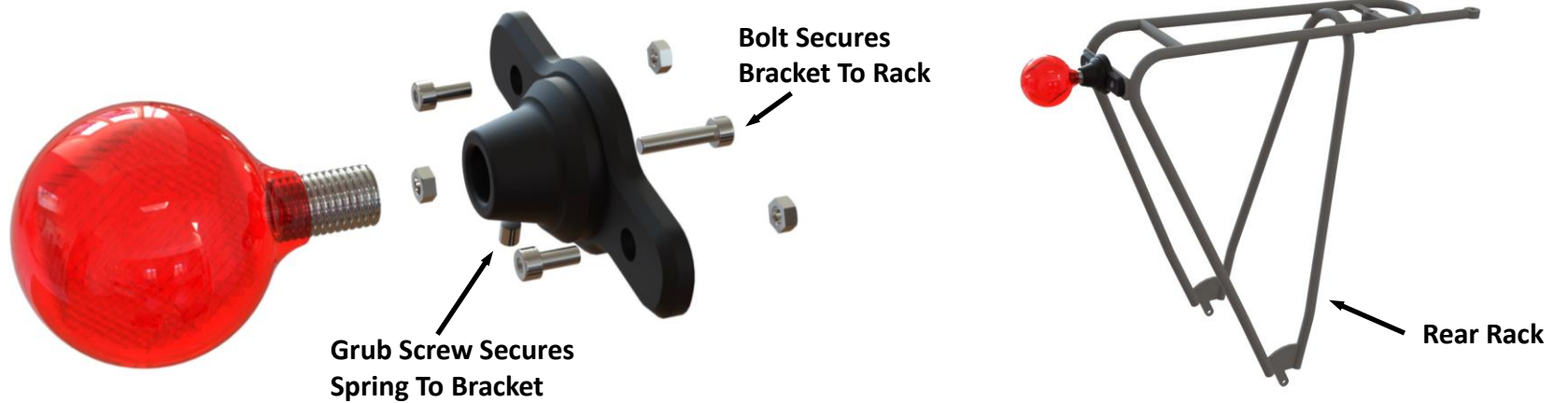
---

## Mount : Rear Fender



---

## Mount : Rear Rack



---

## Mount : Front Forks





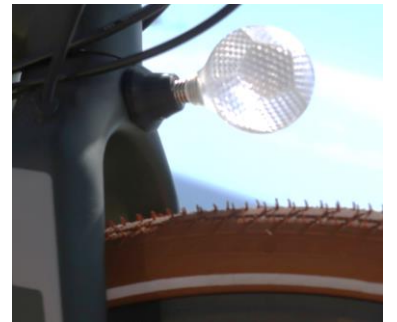
---

## **Unique Feature : Night & Day Illumination**

- **Enables Light To Pass Through Reflector & Illuminate All Faces Simultaneously**



- **Improves Daytime Safety By Also Capturing Natural Daylight**



---

**- Safety 1<sup>st</sup> -**



---

**[www.orblee.au](http://www.orblee.au)**

---