



Star Chronicle

NEW COLLECTION

Ancient legends of space, the first book printer in Eastern Europe, and medieval puppet theater in the new HVLINA Star Chronicle collection



THE HVILINA STAR
CHRONICLE COLLECTION
IS INSPIRED BY
BELARUSIAN MYTHS AND
LEGENDS ABOUT THE
MOON AND THE SUN, AND
OUR ANCESTORS'
PERCEPTION OF
CELESTIAL MECHANICS.
MANY OF THESE LEGENDS
ARE SO ANCIENT THAT
THEY PREDATE THE
ADVENT OF WRITING.
THEY WERE PRESERVED BY
BEING PASSED DOWN
MOUTH-TO-MOUTH TO
THROUGH MANY
GENERATIONS.

To date, little information on this topic is publicly available. The legends are scattered across many corners of our country, and many, unfortunately, have been lost. However, those that have survived were collected by the HVILINA team with the help of Irina Klimkovich - a journalist and publicist, former employee of the National Academy of Sciences of the Republic of Belarus, and co-author of the encyclopedic dictionary "Belarusian Mythology." As a visual representation of the Moon and Sun on the dial, the HVILINA designers developed a stylization of Francysk Skaryna's original coat of arms from the 16th century.





HIGHLIGHTS:

1. Conceptual design containing a large number of references to the collection's legend
2. Mechanism Miyota 9122 premium automatic with the functions day date, weekday, month;
3. Transparent case back exposing the decor of the movement
4. Product presentation: a box made in the form of a stylized medieval folk puppet theater



AS A VISUAL REPRESENTATION OF THE MOON AND SUN ON THE DIAL, THE HVILINA DESIGNERS DEVELOPED A STYLIZATION OF FRANCYSK SKARYNA'S ORIGINAL COAT OF ARMS FROM THE 16TH AS A TRIBUTE TO THE LEGENDARY FIGURE WHO HAS BECOME SYNONYMOUS WITH EASTERN EUROPEAN BOOK PUBLISHING.

It is no coincidence that the Moon on the dial was depicted in its crescent form. In archaic tradition, the Moon and the crescent were perceived as two different celestial bodies. The crescent symbolized the masculine principle, while the Moon represented the feminine.





COMPOSITIONALLY, THE DIAL REPRESENTS THE SKY WITH THE MOON AND SUN PLACED ON IT, EXECUTED IN THE STYLE OF MEDIEVAL VISUAL ART.

The starry sky pattern is inspired by miniatures from medieval Eastern and Western European books.

Special attention was also paid to the development of the indication: massive, complexly shaped hands to maintain medieval aesthetics, and an outer indication ring with contrasting Roman numerals for easy reading of the time.

The main task was to preserve the spirit of the Middle Ages to emphasize the overall concept, but with rethinking, organically fitting into modern design trends.

THE CROWN

Of a complex shape is decorated with a voluminous branded shield.





SPECIFICATIONS:

- Mechanism: Miyota 9122 premium automatic, 26 ruby stones, 40-hour power reserve, -10+30 sec/day accuracy;
- Functions: day date, week day, month;
- Front and back glass – sapphire;
- Case material – stainless steel;
- Quick-release genuine leather strap with a butterfly clasp;
- Water resistance – 100 m;
- Engraving on the back case;
- Decorated winding crown;
- Specially made sector of the mechanism decorated with a seal;
- Case diameter – 43 mm;
- Case thickness – 12.6 mm;
- Strap width – 22 mm;
- Limited collection – 500 psc. of each model.

Star Chronicle

MODEL RANGE



Blue



Silver night



Black



Silver space



Brown



Green

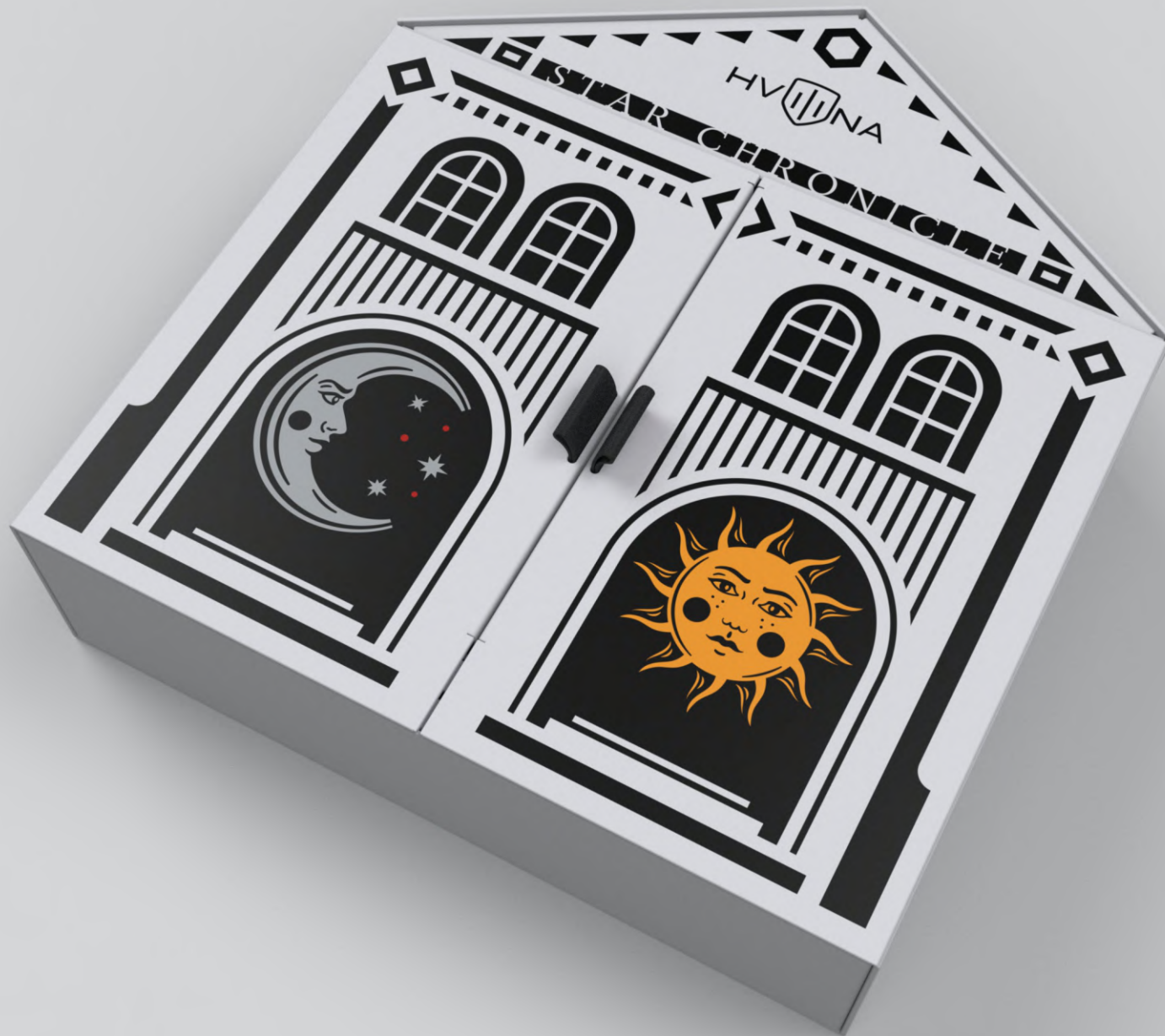
The background for the Moon and Sun in monochrome models is matched to the color of each colored model to the color of each colored model for a harmonious combination of the model range.



BACK COVER

The transparent back cover reveals a specially made sector of the mechanism with a seal in the form of a batleika, where the Sun and Moon are the main characters in the "cosmic theater." Batleika is a Belarusian folk puppet theater that became popular starting from the 16th century.

The batleika stylization on the mechanism sector embodies the theatricality and lyricism with which our ancestors described the phenomena they observed.



PACKAGING

The voluminous box is also designed in the style of an improvised batleika. The collection is limited, with only 500 pieces of each model being released.