

BAMPOT

A side-handle teapot designed for both left-handed and right-handed users.

1

1. IDEA

Side-handle teapots have a long history in China, first appearing during the Tang Dynasty and have been passed down due to their ease of use. Conventional side-handle teapots are typically designed for right-handed users, making it challenging for left-handed individuals to use them. Considering that there are too few left-handed users, manufacturers only produce side-handle teapots for right-handed use, and teapots specifically designed for left-handed users are rarely found on the market.

This design offers a side-handle teapot accessible to everyone. Right-handed users can use it conveniently, and with a simple adjustment, it can also be used by left-handed individuals.



Tang Dynasty side-handle teapot



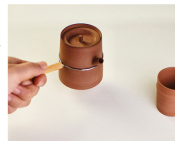
2.Design Solution

The teapot body can be rotated, allowing it to be used at different angles to suit various users, making it suitable for both right-handed and left-handed use.

A typical teapot is suited for right-handed use, not for left-handed.



Rotates through the body of the teapot, also suitable for left-handed.



BAMPOT

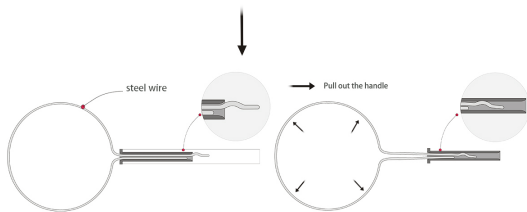
2

3. Innovative functions and usage of the product

Usage Method: First, grip the handle and pull it out halfway; the wire wrapped around the teapot body will spring open. Rotate the body to the desired position, then push the handle back in, securing the wire in place. This design effectively uses the elasticity of the wire to hold all parts of the teapot firmly together.



→ Pull out the handle → Rotate the teapot body to the ideal position → Push the handle back in



The steel wire is elastic and catches the metal parts of the inner wall so that the handle is not easy to sway.

When the handle of teapot is pulled out, the steel wire automatically springs open, and the teapot body can move. When the handle of teapot is pushed in, the teapot body will be fixed.

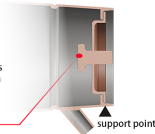
When adding tea leaves or pouring water, it sometimes requires both hands, meaning the lid is often placed on the table, which can be unhygienic. A new structure with a groove has been added to the bottom of the lid. On one hand, when pouring water, the lid can be hung on the spout of the teapot, keeping it off the table to avoid dirtying. On the other hand, this design shifts the lid's center of gravity towards the interior of the teapot, reducing the risk of it falling out while pouring.



In most side-handled teapots, the handle is positioned higher on the body, while the center of gravity is lower, making them harder to lift.

The handle of the teapot is installed near the center of gravity of the teapot body, so that the wrist will not get tired when pouring tea.

As shown in the image, the lid's center of gravity leans inward, so even when the teapot is tilted at 90 degrees, the lid will not fall off.



4. Form inspiration

The form reflects function

1. Drinking tea is a great way to communicate with nature in China, even to a philosophical level, and bamboo is also an essential plant in the Chinese tea culture space. The common point is that they all come from nature, with strong oriental characteristics.

The form of this design comes from bamboo, which is known as the "Four Gentlemen" in traditional Chinese culture, symbolizing humility and respect for others. The design reflects a respectful and equal approach to user functionality: the teapot is equally suitable for both right- and left-handed users, demonstrating an attitude of humility and equality.



2. BAMPOT features geometric forms and contrasts the textures of different materials such as ceramic, metal, and bamboo, creating a sense of vitality within its minimalist form.



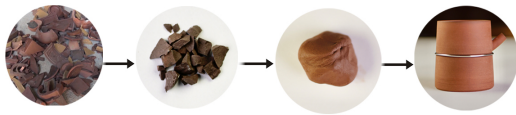
3. The primary material used in the product is purple clay (Zi sha, special purple clay found in Yixing, China), known for its breathability, which enhances the flavor of tea. This clay has been a traditional material for teapot making over centuries. While the teapot's simple, geometric form differentiates it from traditional impression of purple clay teapots, it still resonates with oriental aesthetics.

5. Material

Recycled purple clay is used instead of being discarded as in the traditional manufacturing process.

The materials used in this design include environmentally friendly purple clay for the main body of the teapot, bamboo for the handle, and stainless steel for the connecting components.

1. The Zisha teapot has been part of traditional Chinese tea culture for nearly a thousand years. However, traditional Zisha teapot manufacturing generates significant waste. This design uses a blend of 46% recycled Zisha fragments and 54% new purple clay, which is ground and fermented for five months, enabling material reuse. Traditional ceramics lack this reusable quality. Additionally, this new purple clay has excellent breathability, enhancing the flavor of the tea.



2. The bamboo used for the handle is one of the most traditional materials in Chinese craftsmanship. It is abundantly available in China and is an environmentally friendly material.

3. The stainless steel of the connecting parts is also a recyclable material.

BAMBPOT

4

6.Expansion Design

This design is very expandable, through a simple structural design. The handle can be easily replaced and transformed into a top-handled teapot within minutes.



7.Social Impact

A Humble and Equal Social Activity

In recent years, the international landscape has been filled with discrimination and violence, which I believe stems from a lack of humility and equality in society. BAMBPOT, in both its form and function, conveys an attitude of equality and humility among people, and spreads this idea well through the thing of drinking tea together among friends.



the teapot

Drinking tea in China is both an individual event, but more of a collective activity.



8.Differentiation

1. There are basically no side-handle teapots on the market that can be used by both left- and right-handed users, but BAMBPOT is.



2. Side-handle teapots on the market tend to be traditional in form, with few options appealing to younger users. BAMBPOT's minimalist design has a more youthful appeal.



3. 99% of purple clay teapots on the market are made from non-recyclable materials. BAMBETTLE incorporates eco-friendly materials, with 46% of the clay being recycled.

