

# Reolink Elite Floodlight WiFi

Wider. Sharper. Brighter.



# Reolink Elite Floodlight WiFi

## – Illuminate Your Security

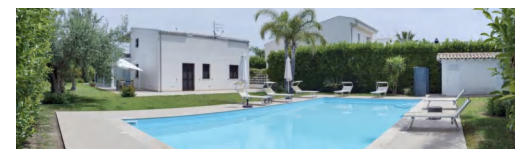
Experience next-level protection with ultra-bright floodlights and AI-powered monitoring, ensuring uncompromised visibility and safety.

The Elite Floodlight WiFi breaks through the traditional separation of security and lighting, integrating security monitoring and intelligent lighting. The dual-lens seamless splicing realizes a 180° panoramic view, which can fully monitor large areas such as courtyards and garages.

With 3000 lumens adjustable brightness light boards and 4K ultra-clear image quality, it provides extremely clear color night vision images. Supports smooth adjustment from 3000K warm yellow light to 6000K cold white light, being a powerful deterrent and courtyard lighting with large coverage.



# 180° Ultra-Wide Coverage, No Blind Spots



See more, worry less. The Reolink Elite Floodlight WiFi utilizes advanced dual-image stitching technology to deliver a seamless 180° panoramic

field of view in razor-sharp 4K UHD. Whether monitoring expansive driveways, commercial lots, or key entry points, every detail is captured with precision.

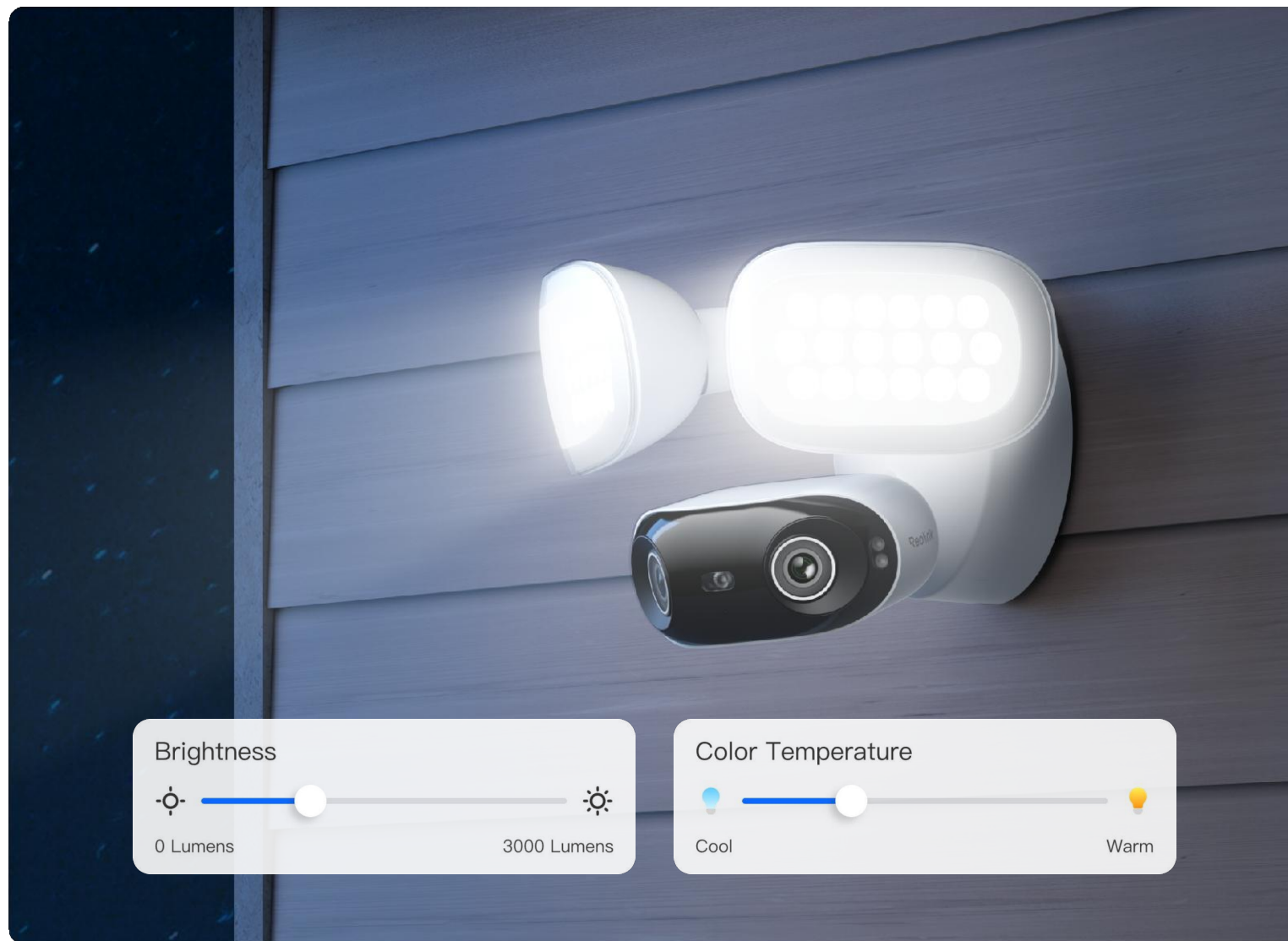


## Blazing Brightness, Maximum Security

Powerful LED floodlights ensure no shadow goes unnoticed. With adjustable brightness up to 3000 lumens, the Elite Floodlight WiFi illuminates up to 12m, giving you unmatched visibility and deterrence. Choose your preferred color temperature: 3000K warm light for ambiance or 6000K cool light for high-clarity security.

**Note:**

Brightness and color temperature can only be adjusted manually via the Reolink app. Voice control for the light switch will be available at launch and can later be enabled on samples via a firmware update.



# Smart Adaptive Lighting Modes for Every Scenario

Let the floodlights respond to your needs with intelligent lighting modes:

## Tailor your lighting:

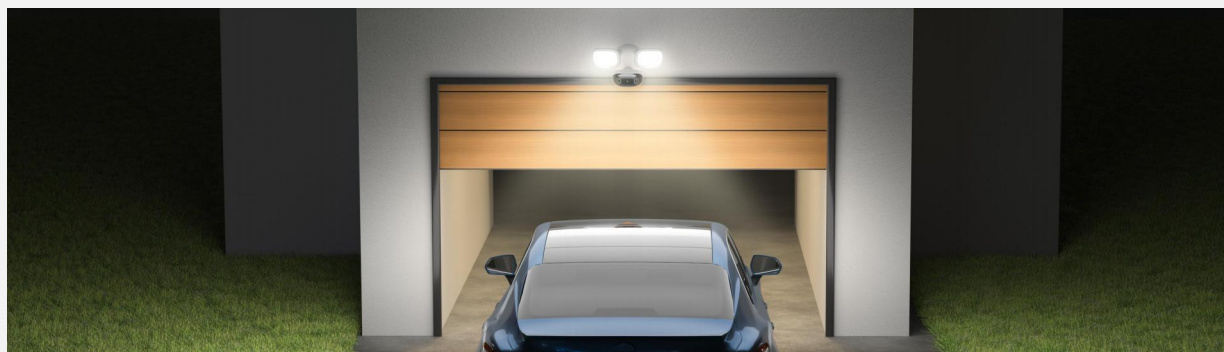
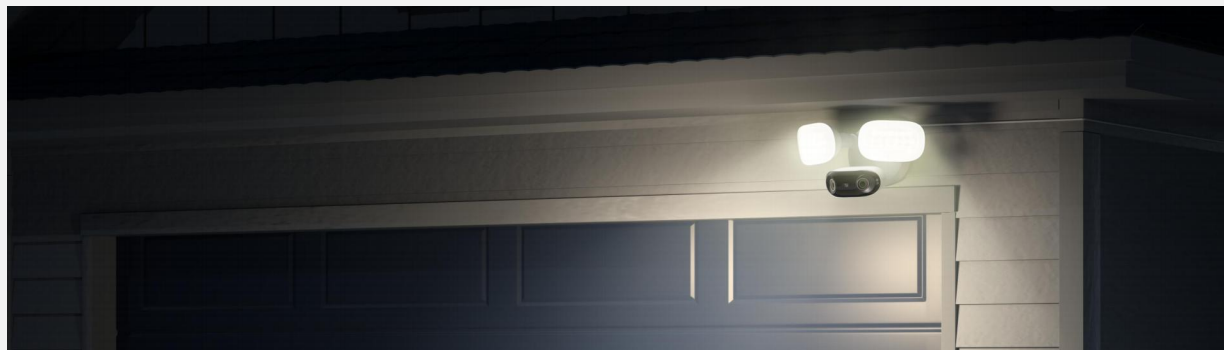
Set the duration and timing of the floodlights

## Dusk-to-Dawn:

Automate the switching of lights on and off according to ambient light levels

## Motion-Triggered:

Activates upon detecting motion from people, vehicles, or animals



# Intelligent Motion Detection with Instant Response

Stay ahead of threats with AI-powered detection that distinguishes between humans, vehicles, and animals. Upon motion detection, the floodlight activates while a built-in siren (Maximum 105dB) and a customizable 5-second voice alert provide immediate deterrence. Real-time mobile notifications ensure you're always in the know.

## Smart AI-Powered Detection:

Instantly identifies people, vehicles, and animals.

## Loud & Customizable Alerts:

A powerful siren and a customizable voice message providing an immediate deterrence.

## Instant Notifications, Anytime, Anywhere:

Stay informed with real-time alerts straight to your phone, ensuring peace of mind no matter where you are.





# Flexible Storage, No Subscription Fees

Enjoy secure, subscription-free storage with multiple recording options:

- Supports up to 512GB microSD card storage, ensuring continuous recording even when offline, footage will be saved directly to the microSD card. (microSD not included)
- Seamless compatibility with Reolink NVR & Home Hub series.
- Store footage on FTP/NAS servers (supports RTSP/ONVIF) for flexible access.



# Next-Gen Connectivity with Wi-Fi 6

Dual-band Wi-Fi 6 technology ensures a rock-solid, lag-free connection and faster speed. Experience seamless real-time streaming and instant footage retrieval, all while benefiting from enhanced WPA3 encryption for superior security.

## 2.4/5GHz Dual-Band Connectivity

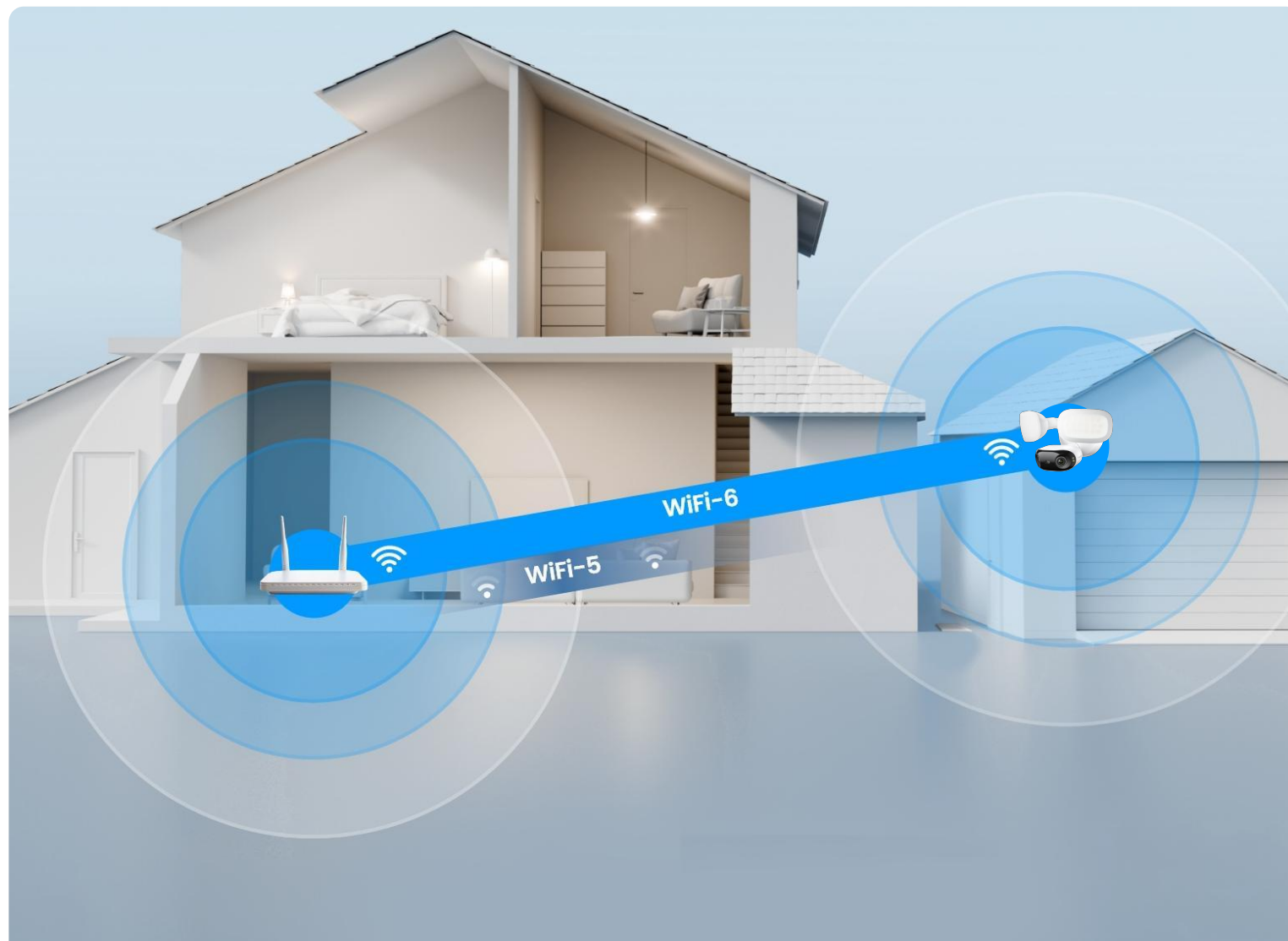
Ensuring stable performance in any environment.

## Wi-Fi 6 Performance

For uninterrupted security streaming, connect with a wider range and faster transmission.

## WPA3 Encryption

Advanced encryption protocols ensuring a more secure and private connection.





# Customizable Security with Smart AI

Take control of your security with advanced AI-powered smart event detection:

## Virtual Fence Alert

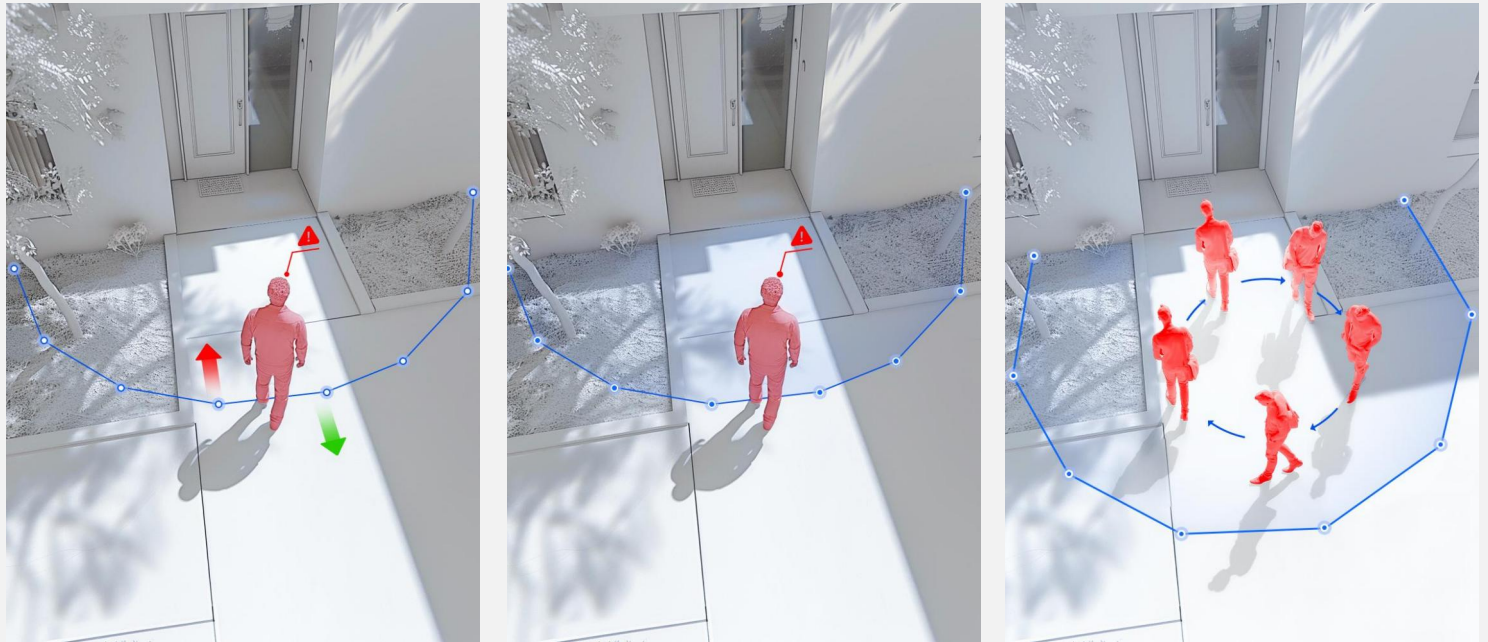
Set a line in the field of view of this camera, and the camera will trigger the alarm when people, vehicles, or animals cross the line from the set direction.

## Zone Intrusion Alert

Set a zone in the field of view of this camera, and the camera will trigger the alarm when people/vehicles/animals enter the zone.

## Zone Linger Alert

Set a zone in the field of view of this device, and the device will trigger the alarm when people/vehicles/animals enter and linger there for a certain time.



# Smart Home Integration for Effortless Control

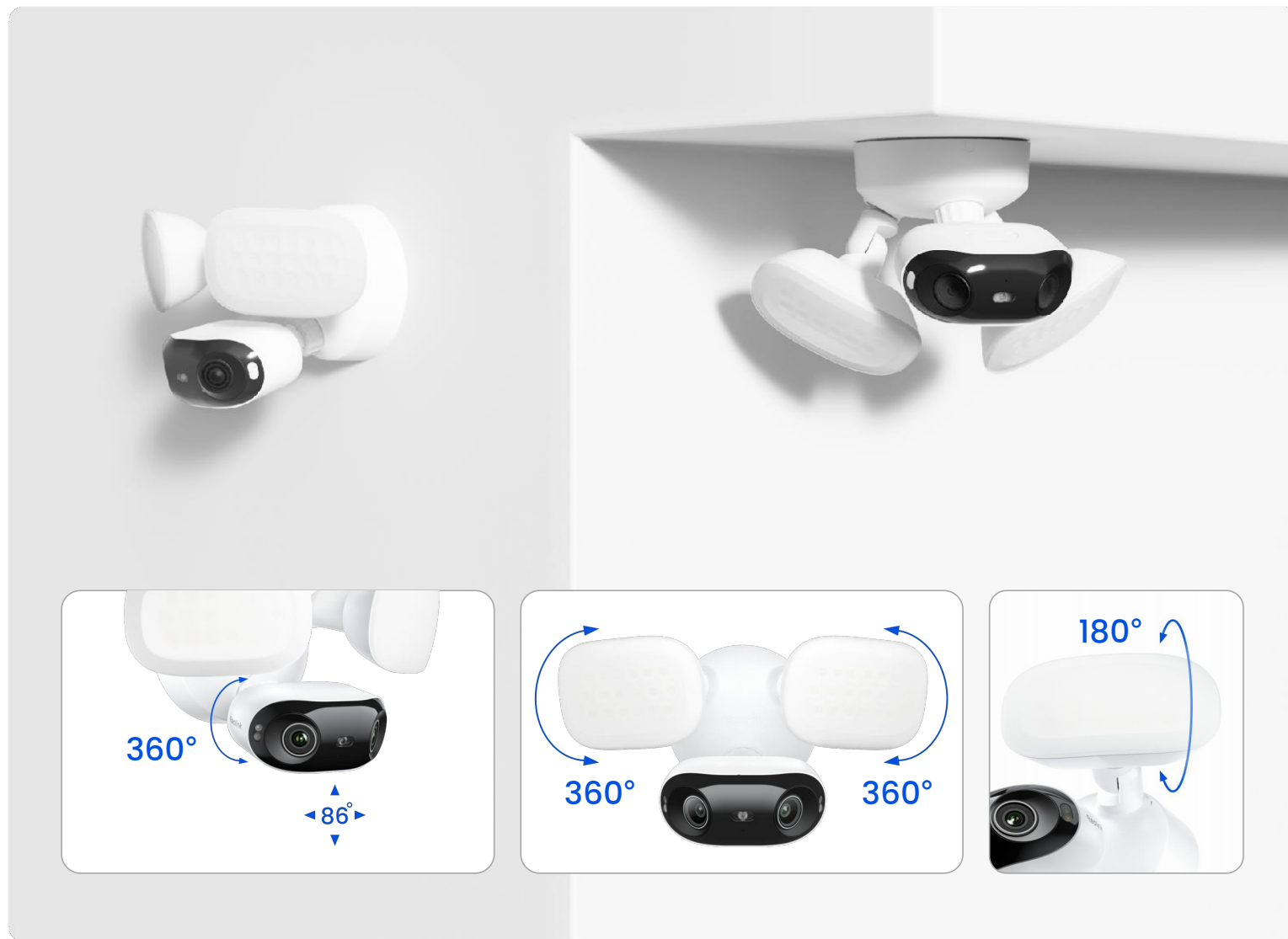
Hands-free security at your command. Seamlessly integrate with Google Assistant & Alexa, controlling lights on/off and check live footage via voice commands.

Note: Voice control for the light switch is not available in the sample stage but will be supported at launch. A firmware upgrade will enable this function on samples.



## Versatile Installation, Perfect for Any Space

Designed for flexibility, the Elite Floodlight WiFi supports multiple mounting options, including ceiling and wall setups. Adjustable camera and light angles ensure optimal coverage, whether securing entryways, backyards, or commercial premises.





# Specifications

## Elite Floodlight WiFi

Video & Audio	
Image Sensor	1/2.7" CMOS Sensors
Resolution	5120x1552(8 Megapixels) @20fps
Lens	f=2.8mm fixed, F=1.6
Field of View	Horizontal: 180°; Vertical: 59°
Infrared Night Vision	Up to 30 meters (100ft); LED: 9pcs/850nm (Auto-switching with IR-cut filter)
Color Night Vision	With Floodlights: 3000 Lumens/3000K~6000K
Frame Rate	Main stream: 2fps - 20fps(Default: 20fps)
	Sub stream: 4fps - 20fps(Default: 20fps)
Code Rate	Main stream: 3072Kbps - 8192Kbps(Default: 5120Kbps)
	Sub stream: 256Kbps - 2048Kbps(Default: 1024Kbps)
Audio	Two-way audio
Power Requirements	
DC Power	AC 100V~240V, 50~60Hz DC 5V= 2A (For Set Up Only)
Interface	
Power Port	DC power port
Reset Button	YES

microSD Card Slot	Supports max. 512GB microSD card
Audio In/Out	Built-in microphone and speaker
Wi-Fi	
Wireless Standard	IEEE 802.11 ac/ax/a/b/g/n
Operating Frequency	2.4GHz/5GHz
Wireless Security	WPA/WPA2/WPA3
Software	
Browser Supported	Edge, Chrome, Firefox, Safari
OS Supported	PC: Windows, Mac OS; Smartphone: iOS, Android
Protocols & Standards	HTTPS, SSL, TCP/IP, UDP, HTTP, IPv4, UPnP, RTSP, RTMP, ONVIF, SMTP, NTP, DHCP, DNS, DDNS, FTP, P2P
User Access	Max. 20 users (1 admin & 19 users); Max. 12 simultaneous streams (2 main & 10 sub streams)

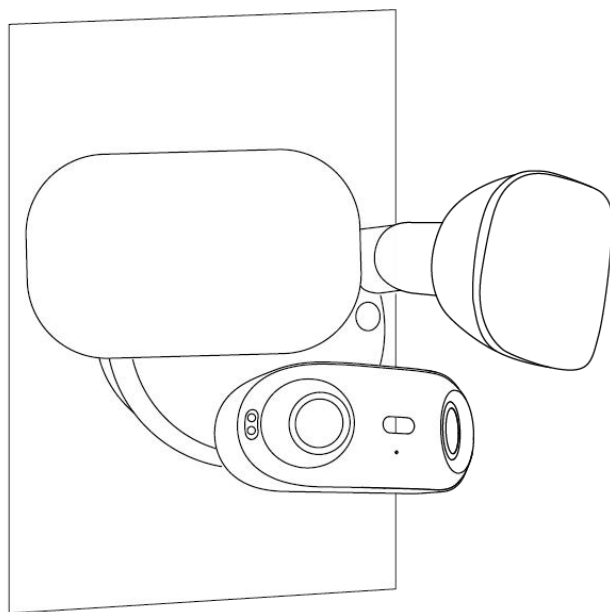
Other Features	
Smart Alarm	Motion detection; Person/vehicle/animal detection; Virtual fence alert; Zone intrusion alert; Zone linger alert
Record Mode	Motion-triggered recording (Default); Scheduled recording; 24/7 recording
Time Lapse	YES
Smart Home Compatibility	Alexa, Google Assistant
Working Environment	
Operating Temperature	-10°C~+55°C (14°F~131°F)
Operating Humidity	10% ~ 90%
Weatherproof	IP66
Mechanical	
Dimensions	174x 184x 295 mm
Weight	1.3kg
Warranty	
Limited Warranty	2-year limited warranty. For support, visit <a href="https://support.reolink.com/hc/en-us/">https://support.reolink.com/hc/en-us/</a>



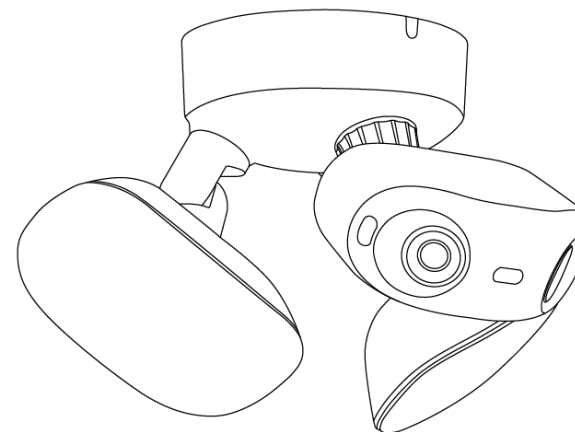
# Install the Camera

## 01 Installation Tips:

Wall Mounting



Eave Mounting



**Note:**

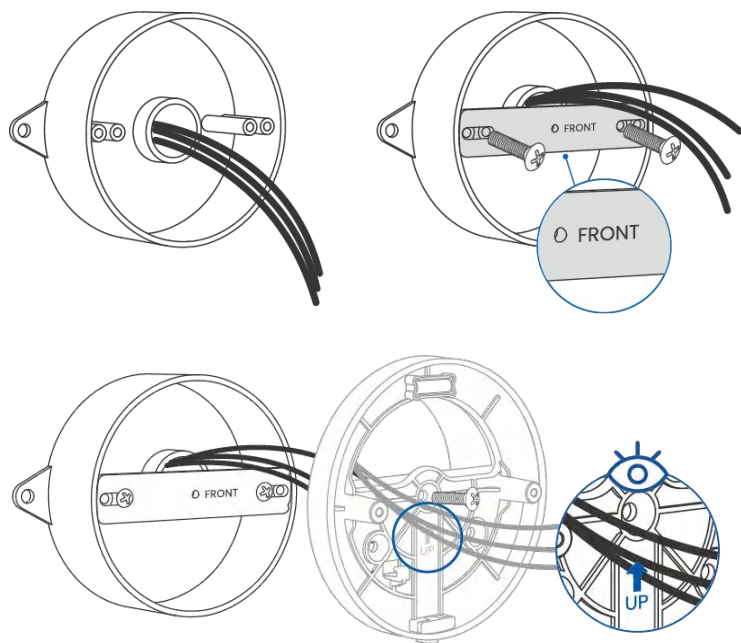
- \* Handle the drill with care and follow safety guidelines.
- \* Power supply via plug-in is available, but the default method is a wired AC connection.



## 02 Secure the Mounting Bracket:

### Option 1: Mount on an Existing Junction Box

Attach the mounting bar using screws from Pack A. Pass the wires through the bracket and secure it with screws from Pack B.

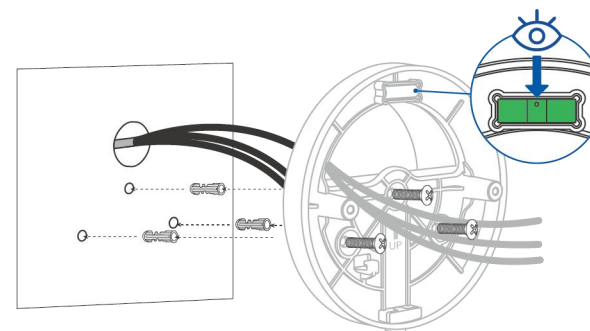


Note:

\* Junction Box not included.

### Option 2: Mount Directly on a Wall

Notes: Adjust the bracket to center the bubble level.  
Mark and drill three holes for the mounting bracket; insert wall anchors.  
Pass the wire through the bracket and secure it with screws from Pack C.



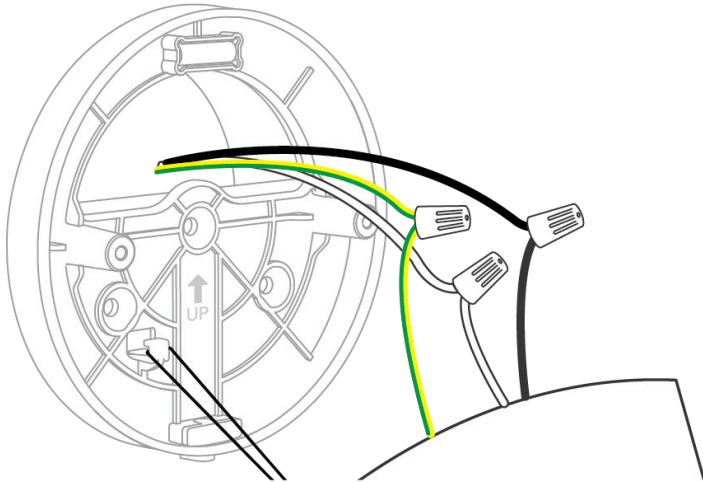
Note:

\* For wall mounting, the arrow points upward.

\* For eave mounting, the arrow points toward the house.

### 03 Connect Wires :

Hang the camera on the bracket.

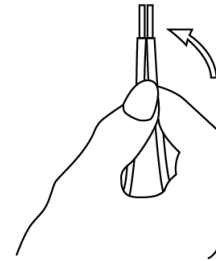


#### Important Notice:

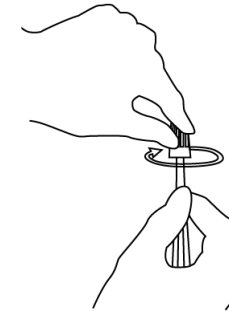
Avoid crossover connections. If unsure, consult an electrician.

Connect the live (black), neutral (white), and ground (yellow-green) wires from the junction box to the matching wires on the camera.

Cover the wires with the wire nuts and twist them about five turns. Pull the nuts gently to ensure they are secure.



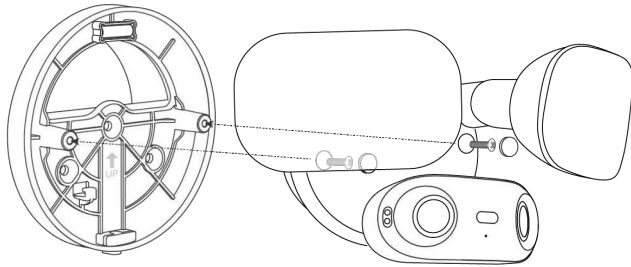
Hold the wires together.



Twist the wire nut 5-10 times.

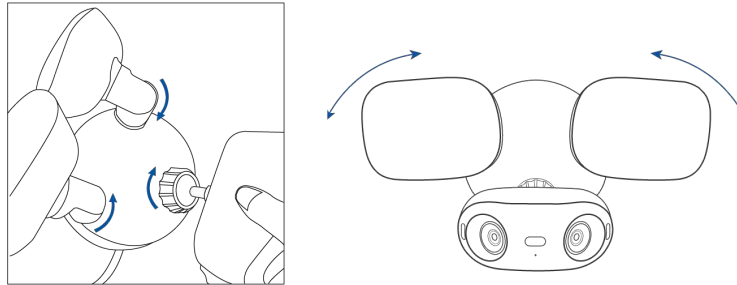
#### 04 Secure the Camera :

Insert screws from Pack D and cover with the silicone plug.



#### 05 Adjust the Angle :

Adjust the camera's viewing angle as needed.

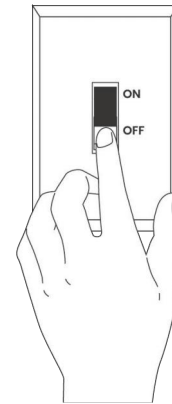


##### Note:

\*Use the wrench to tighten or loosen the camera knob if needed.

#### 06 Power On :

Turn on the circuit breaker. Wait for the indicator light to turn solid blue.





# Thank You

