



## DR Qianjin Tiara KING&QUEEN

Drawing upon the noble symbols of Eastern and Western royalties, it conveys a unique and opulent haute couture bridal aesthetic.





## Western Form, Eastern Spirit

Inspired by the tiara worn by Princess Diana at her royal wedding, the DR Qianjin Tiara (KING&QUEEN) ingeniously integrates Eastern imperial motifs of dragon scales and phoenix feathers, creating a haute couture bridal gold jewelry set. It symbolizes the bride as both a cherished princess and a self-assured queen.



# Crown Your Love, Honor for Life

This tiara adopts Eastern imperial dragon scale and phoenix feather patterns, with the number "nine" as the core design element—symbolizing Eastern nobility and homophonically representing "long-lasting" in Chinese. Through the interplay of nine dragon scales and nine phoenix feathers, it embodies the wish for "long-lasting" love, aligning with the brand's philosophy of eternal true love.

The Eastern imperial symbolism, together with the Western crown, elevates the wedding into a timeless tribute to love's highest honor.





# Convertible Tiara, Shining from Ceremony to Daily Life

Breaking the limitations of gold materials, this tiara features a proprietary convertible structure, allowing it to be flexibly transformed into multiple accessories, such as a bracelet, necklace, brooch, or earrings, thus covering various scenarios from a wedding ceremony to everyday occasions. A single tiara brings versatile experiences, injecting elegance and radiance into daily life and extending its service life.



Grand necklace



Brooch



Pendant



Small crown



Earrings

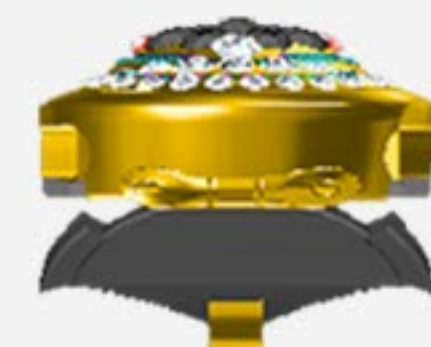


Bracelet



# Versatile Elegance, Meticulous Artistry

This tiara employs a flexible clasp positioning technique, using "needle-threading" of high jewelry to secure gemstones. This allows the lower phoenix feathers to sway gently, injecting dynamic vitality into static jewelry while ensuring precise and secure positioning during assembly and disassembly.





# Excellence of High Jewelry

This tiara leverages the "graduated colored gemstone setting" technique for maximum light refraction, with gems arranged in a gradient from light to deep tones, enhancing visual depth, interpreting a truly luxurious texture, and witnessing everlasting brilliance.





# Excellence of High Jewelry

Combined with intricately handmade filigree dragon scale and phoenix feather patterns, this tiara delivers a masterpiece of precision, unveiling the exquisite artistry behind the radiant glow.

