



TONE™ T1

The world's quietest high-performance handheld leaf blower.



MISSION

To deliver the world's quietest and most efficient outdoor blowers, merging aerospace precision with scalable, human-centered design.

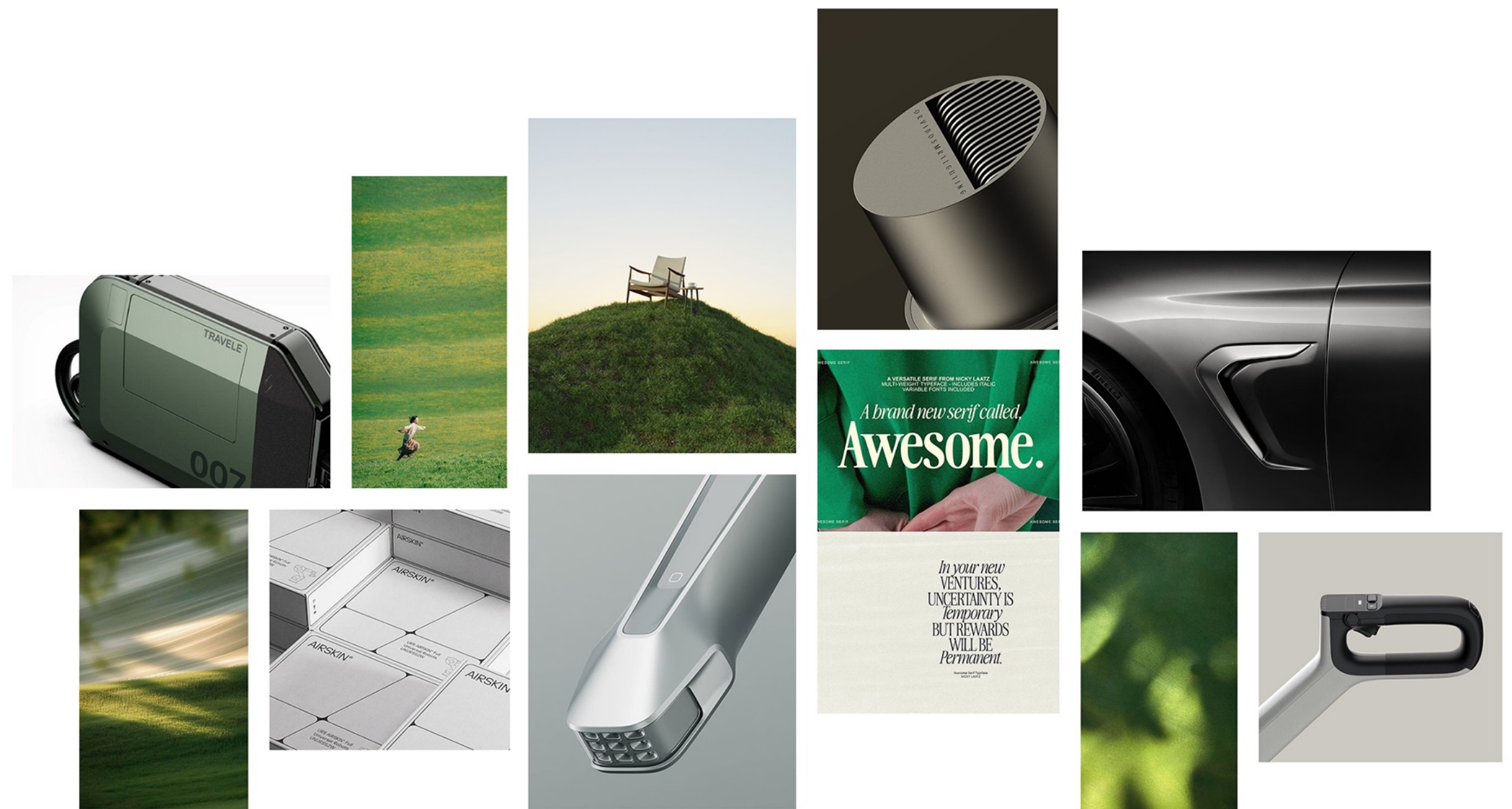
VISION

To lead a global shift toward quieter communities, proving that progress doesn't have to be loud to be powerful.

PROMISE

Power that respects your peace.

MOODBOARD



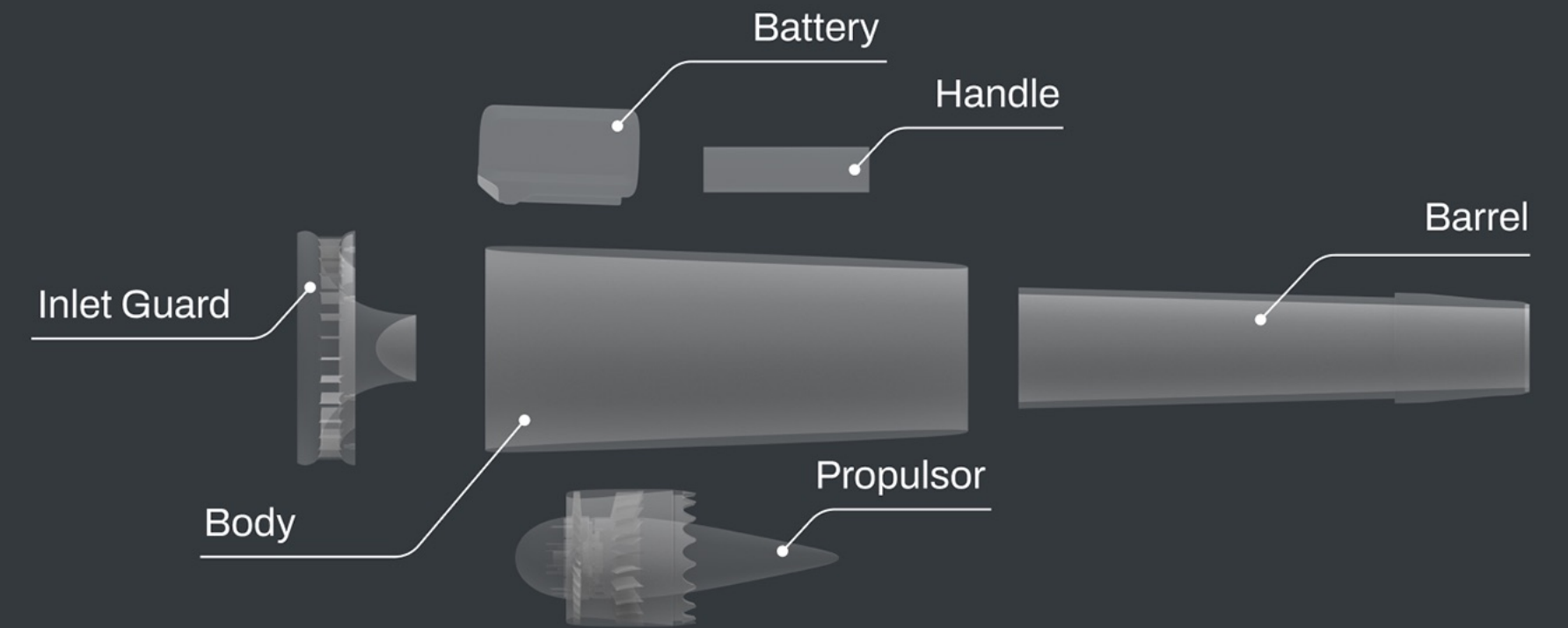
TONE™ T1

Design Ideation

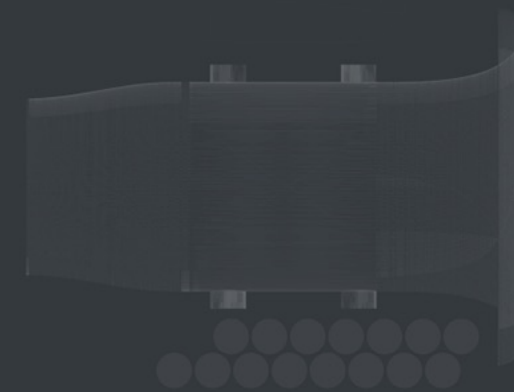
Development began with a deep dive into the key components of a handheld leaf blower. Following several prototype cycles, our team validated the technology and applied the insights gained to refine the design.

Styling

As the brand's flagship, this product defines our design identity. Guided by user insights, we explored multiple styling directions to capture the right aesthetic balance.



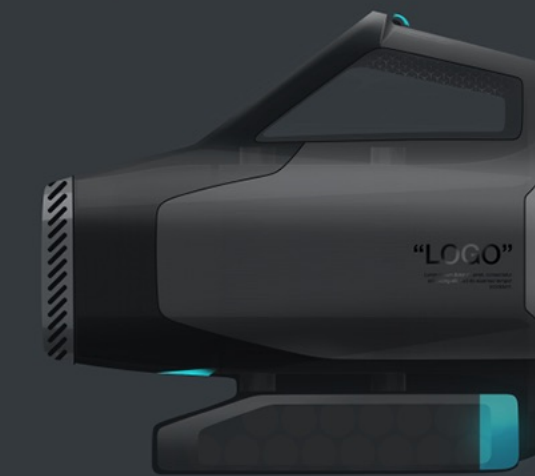
C0



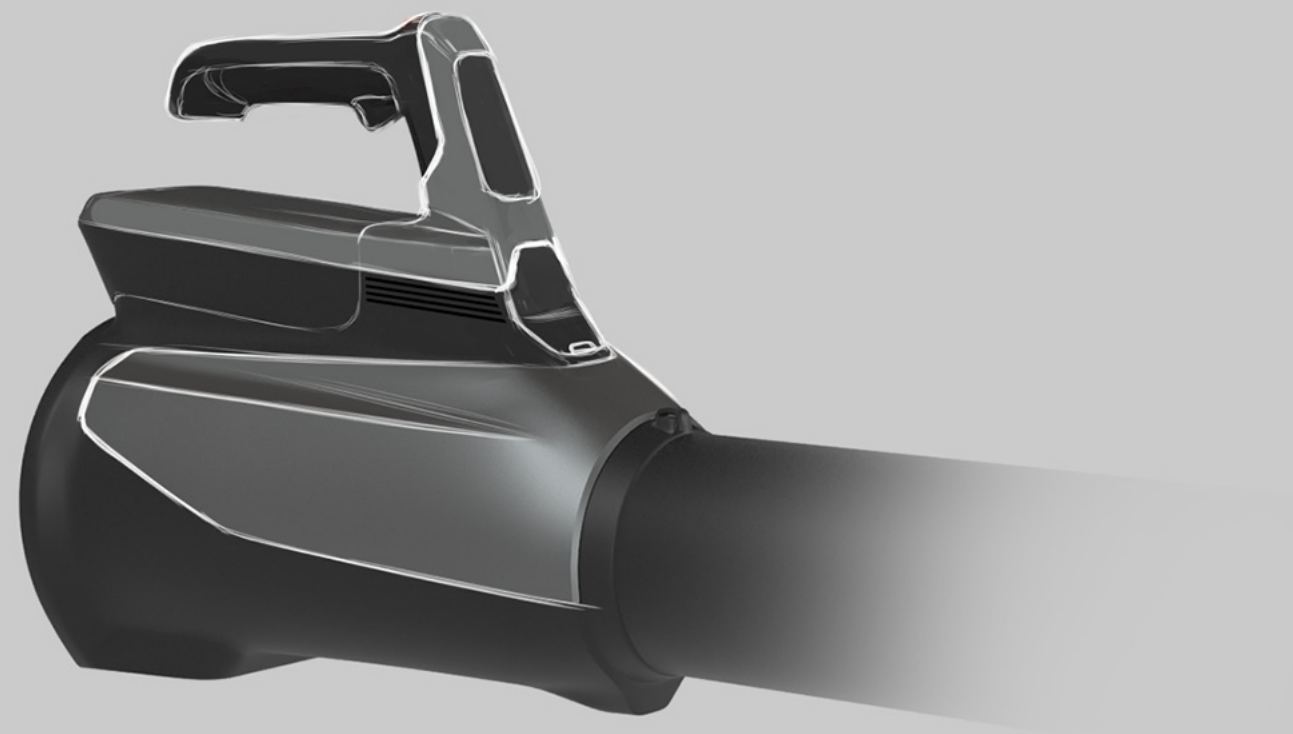
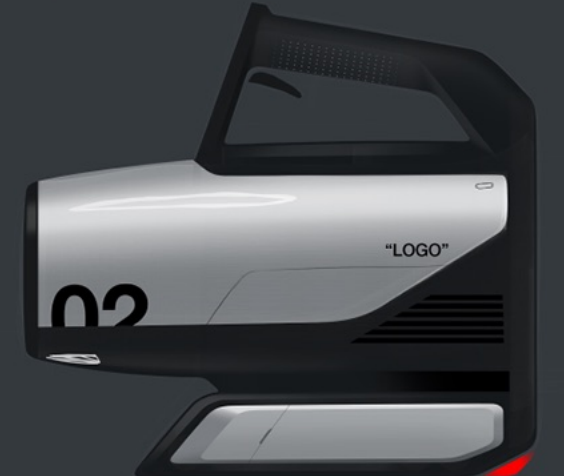
C1



C2



C3



Final design

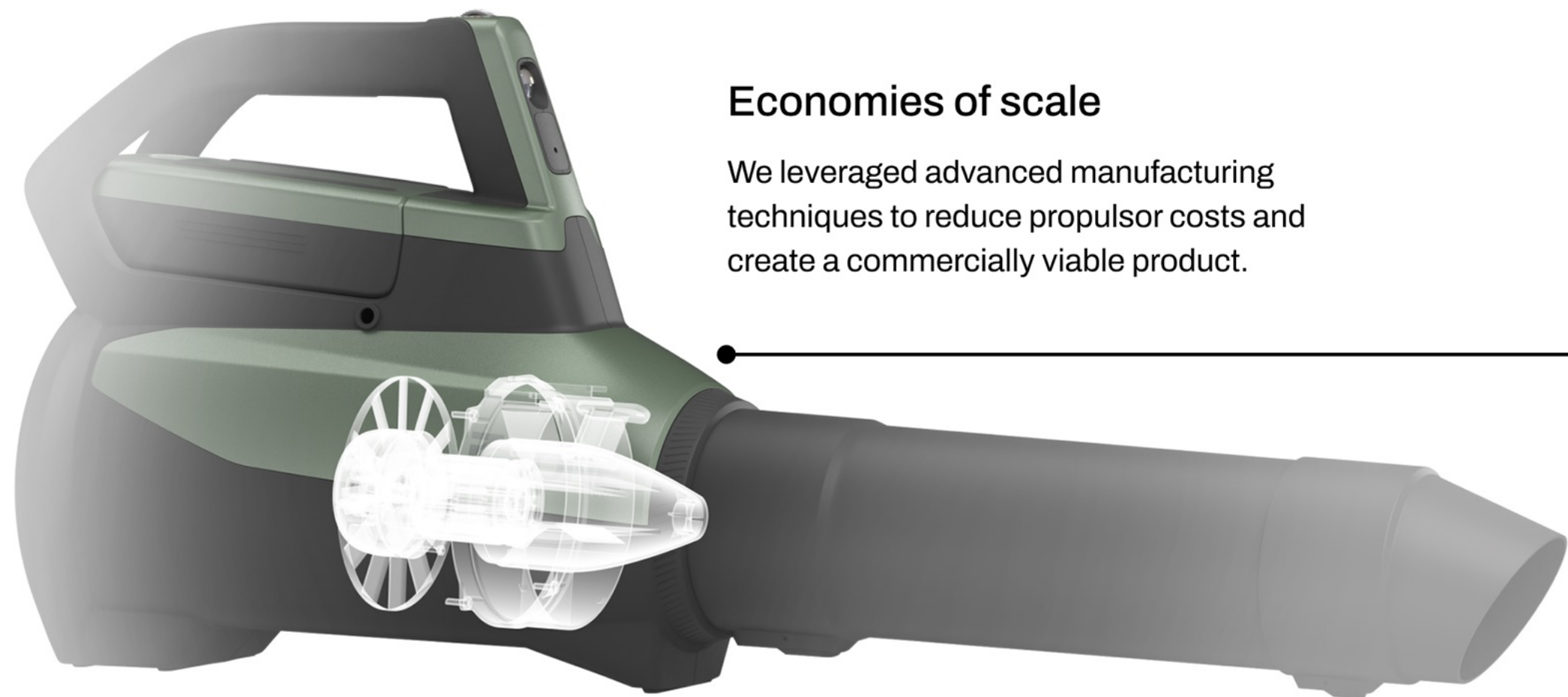
With a design unlike anything on the market, the leaf blower features simple yet technical surfacing across the bodyside. A reimagined component layout optimizes weight distribution and spatial efficiency, resulting in a rear-slotted battery and a closed-loop, Y-shaped handle that seamlessly integrates into the body.



Technical Specs

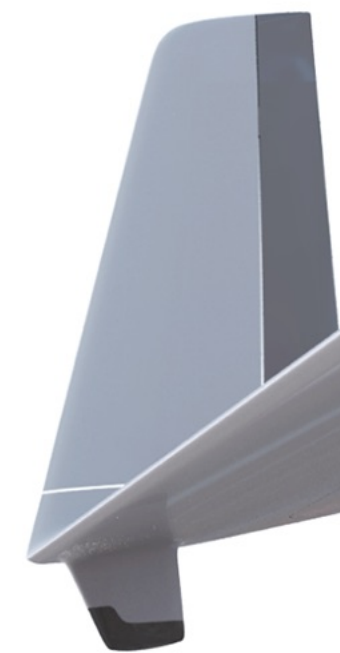
PARAMETER	VALUE
Average Velocity (mph)	107
Peak Velocity (mph)	150
Volumetric Flow Rate (CFM)	887
Corrected Force (N)	25

TONE™ T1



Economies of scale

We leveraged advanced manufacturing techniques to reduce propulsor costs and create a commercially viable product.



Whisper Aero

Taking Aerospace propulsion technology, and scaling it down to a leaf blower

Whisper Aero, Tone's parent company, is redefining quiet electric propulsion. We've applied that expertise and advanced manufacturing methods to create the world's quietest high-performance leaf blower.



Power Dial can be pressed to lock a Speed Mode

Most use-cases can be covered by Speed 3

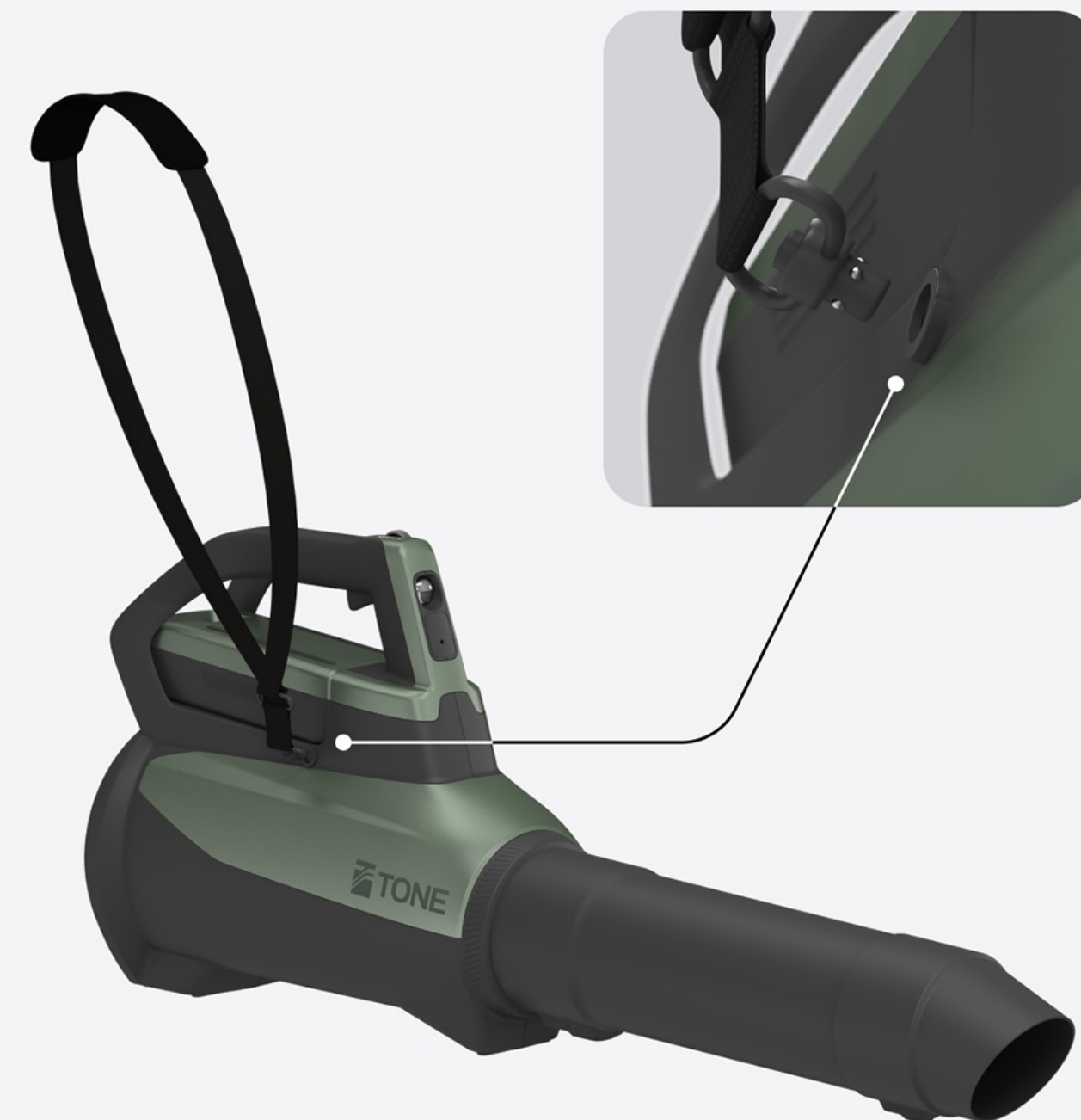
Turbo yields maximum power at a reduced runtime



Intuitive UI: Scrollwheel & 5-speed display

The blower features five power modes controlled by the Power Dial, with speed level shown on the indicator. Press the dial to lock your preferred speed for extended use. Most users will find Speed 3 ideal, while Turbo Mode (Speed 5, red) offers maximum output at reduced runtime.

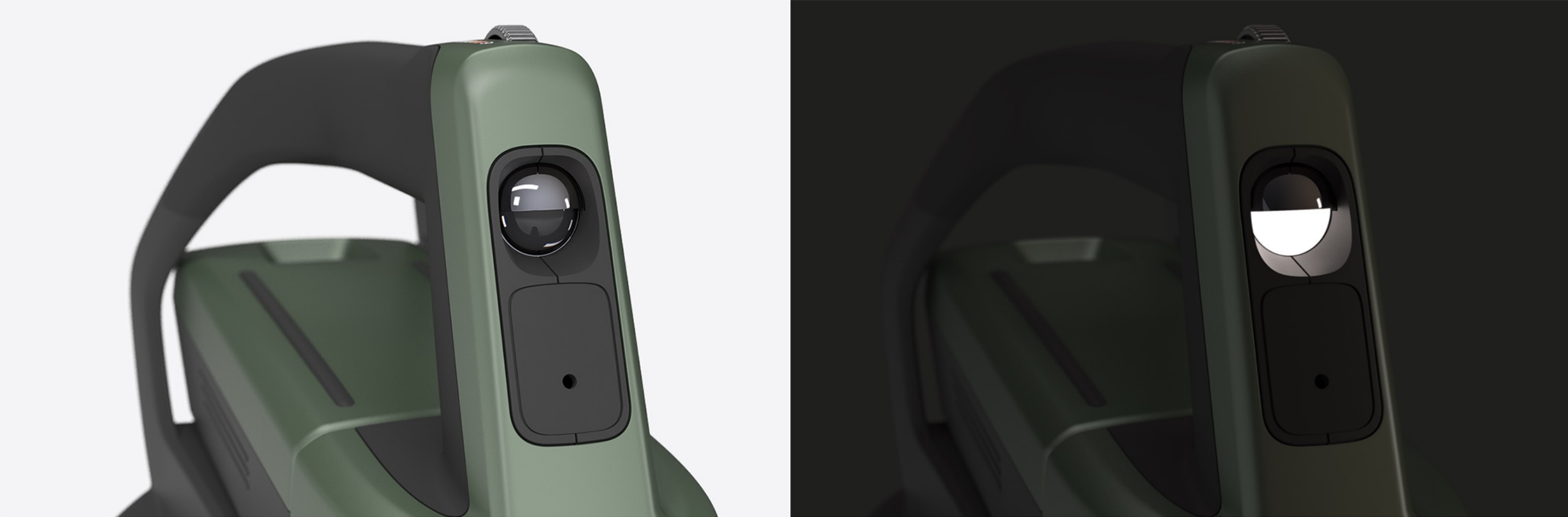
Tone T1 Design Development



Strap latch

Inspired by single-point rifle slings, we integrated a QD push-button attachment point—offering an intuitive user experience and subtly nodding to Whisper Aero's defense roots.





Day & Night operability

Thanks to its exceptionally quiet operation, the blower can be used anytime—morning, night, or in noise-sensitive areas—without disrupting neighbors or the surrounding community.

Battery & Charger

The battery's ergonomic form includes a rear pull divot, five-cell charge indicator, and protective rubber rails to prevent surface wear. Compact and efficient, the charger's pill-shaped light displays both charge progress and error alerts at a glance.





Prototyping & CMF

Through extensive prototyping, we refined every detail—from finishes to color tones. With the final design complete, tooling is in progress and pre-orders are open ahead of first deliveries in Fall 2026.

Tone T1 Design Development

