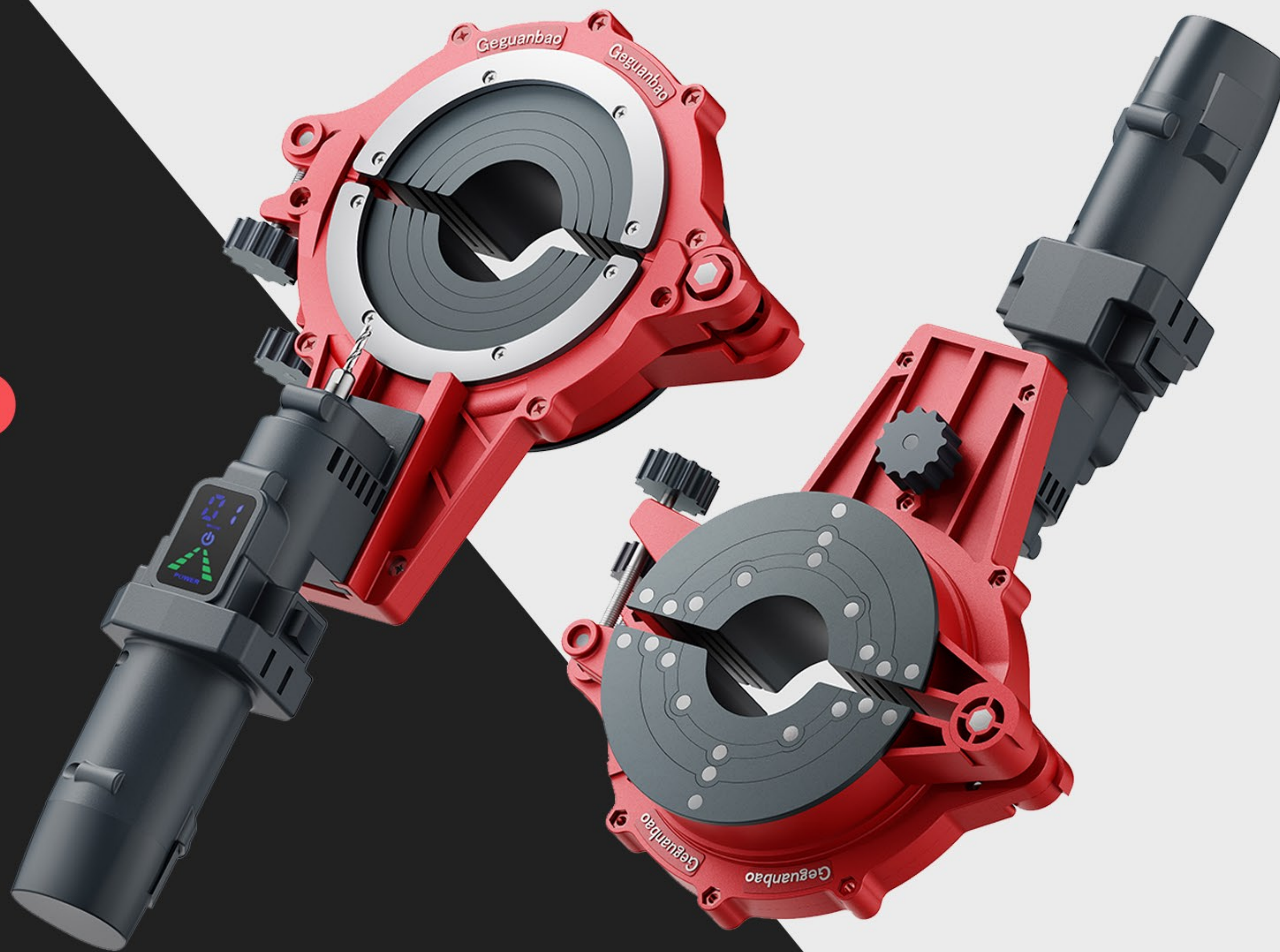


Geguanbao

The Geguanbao is a dedicated cordless tool for plastic pipe cutting, creating a more efficient, eco-friendly and safe cutting experience for users.

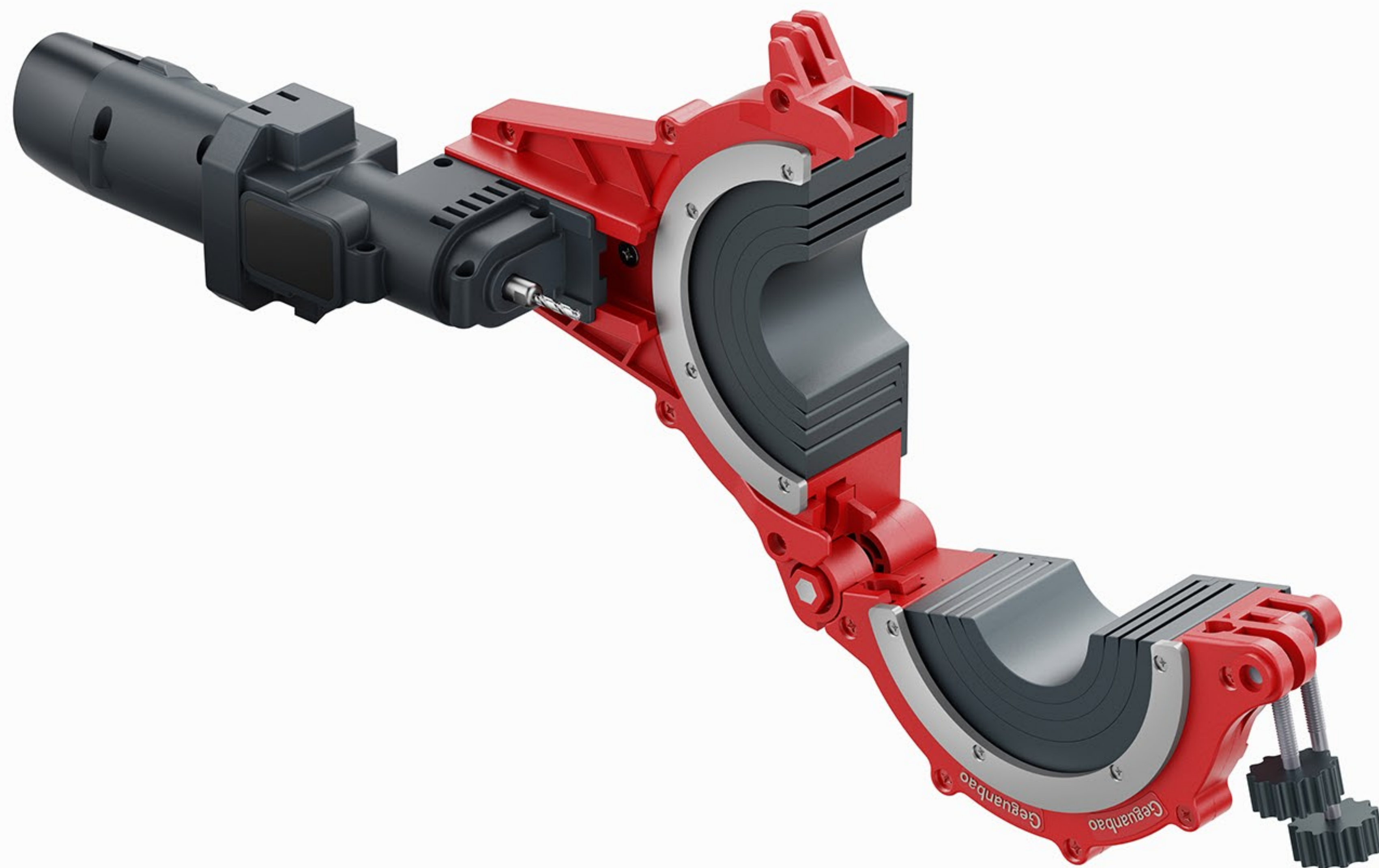


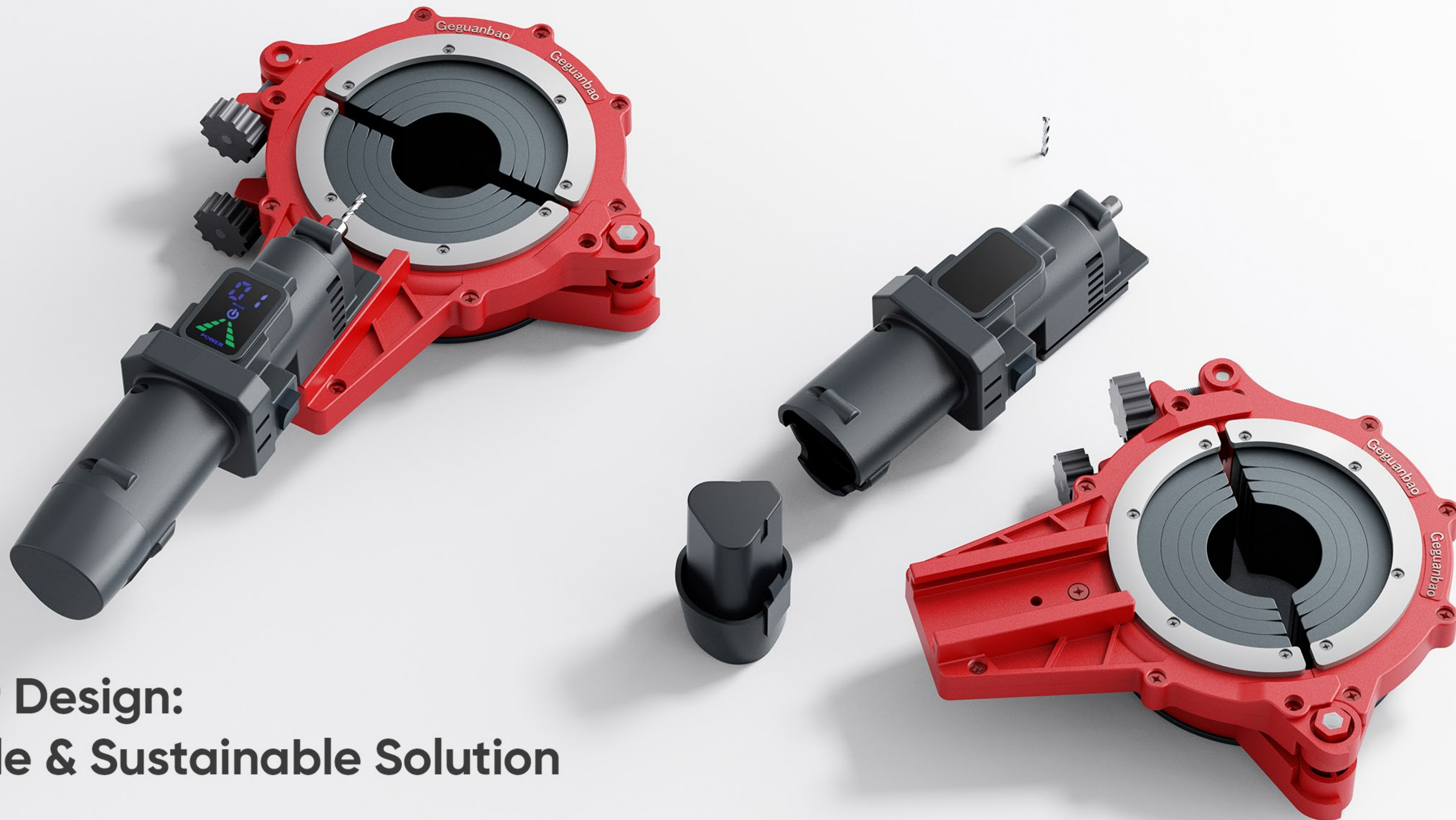
People-Centered, Function-Oriented Design

The Geguanbao draws on deep insights into workers' practical operations in its design. It uses red-gray color division to endow the cutter with distinct visual recognition while clearly defining the functional zones of the clamping mechanism and high-performance motor.



It adopts a high-strength aluminum main frame and forged metal core clamping components, ensuring structural stability and durability during long-term high-load use.





Modular Design: A Flexible & Sustainable Solution

The Geguanbao features a highly modular architecture that allows all its core components to be independently disassembled and replaced, with a simple and efficient assembly form. This design meets the maintenance and upgrade needs of different scenarios while reducing users' long-term maintenance costs.

Circumferential Cutting

The Geguanbao features a unique circumferential cutting mechanism. With this mechanism, the cutter rotates at a constant speed along the pipe wall, ensuring even force distribution. This design enables an efficient, low-noise, and dust-free cutting process, ensures exceptionally smooth and flat cut edges, and lays a perfect foundation for subsequent installation work.





One Cutter for Pipes Ranging from 1.5" to 4"

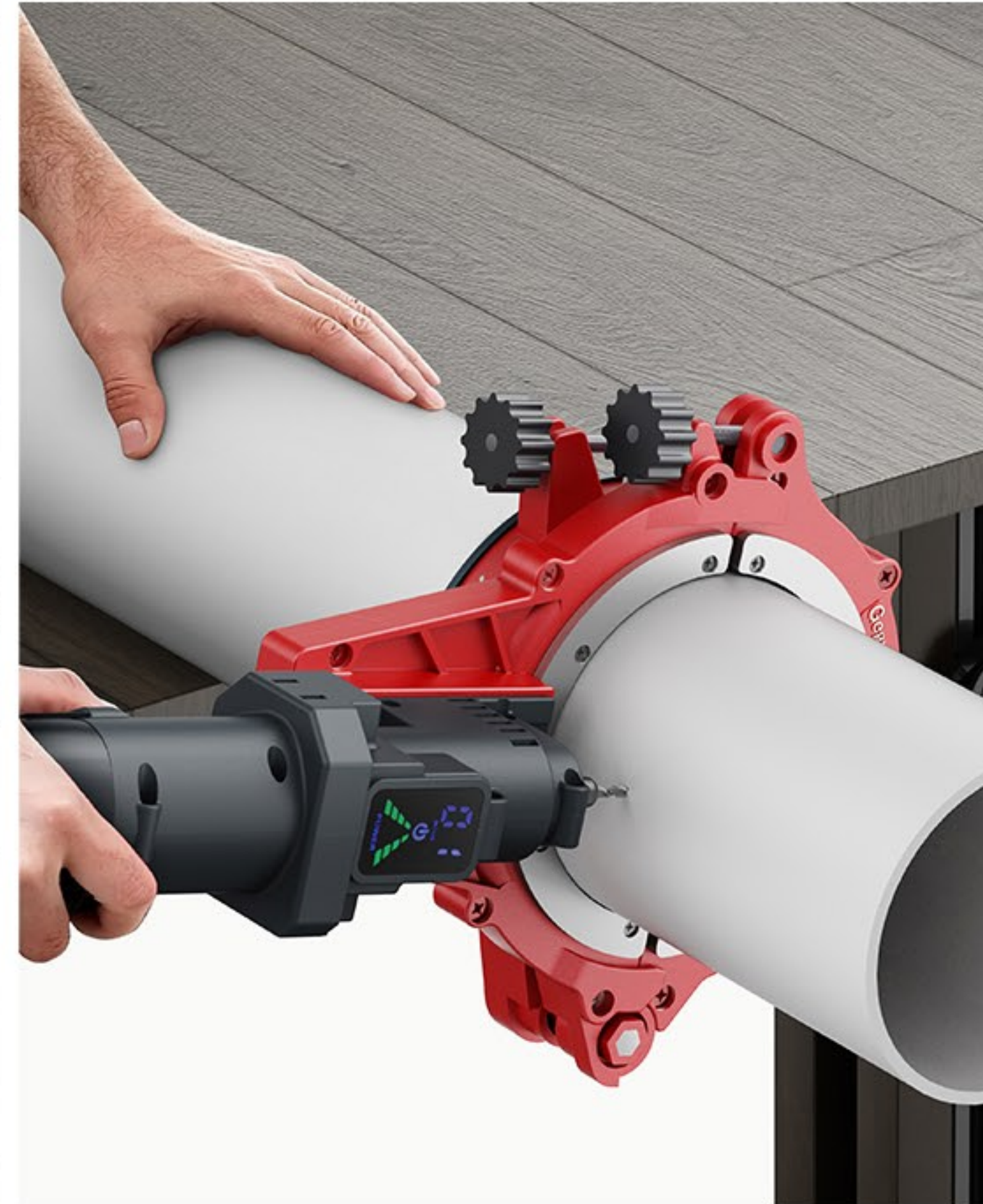
The Geguanbao enables quick pipe diameter adaptation through its sophisticated mechanical structure and comes with fixing rings of different sizes. Operators only need to adjust the fixing mechanism on the red clamp to enable it to accurately match different pipes ranging from 1.5" to 4", greatly enhancing operational continuity and efficiency.

Full Cutting Workflow



Step 1: Clamp the Pipe

Users can quickly open the clamp via the dual screws, place the pipe inside, and then fasten it. The clamp fits pipe diameters from 1.97" to 4.33" and ensures stable, non-slip clamping.



Step 2: Start the Motor

Users can select the cutting mode and intensity via the intelligent UI. When the start button is pressed, the cordless motor responds instantly.



Step 3: Circumferential Cutting

The cutter rotates at a constant speed around the pipe, completing the cut in seconds. The cutting process is smoke-free and low-noise, ensuring smooth and effortless operation.



Step 4: Complete the Cutting

After the cutting process is finished, the cut surface is smooth and burr-free, eliminating the need for secondary processing and ensuring the quality of subsequent pipe connections.