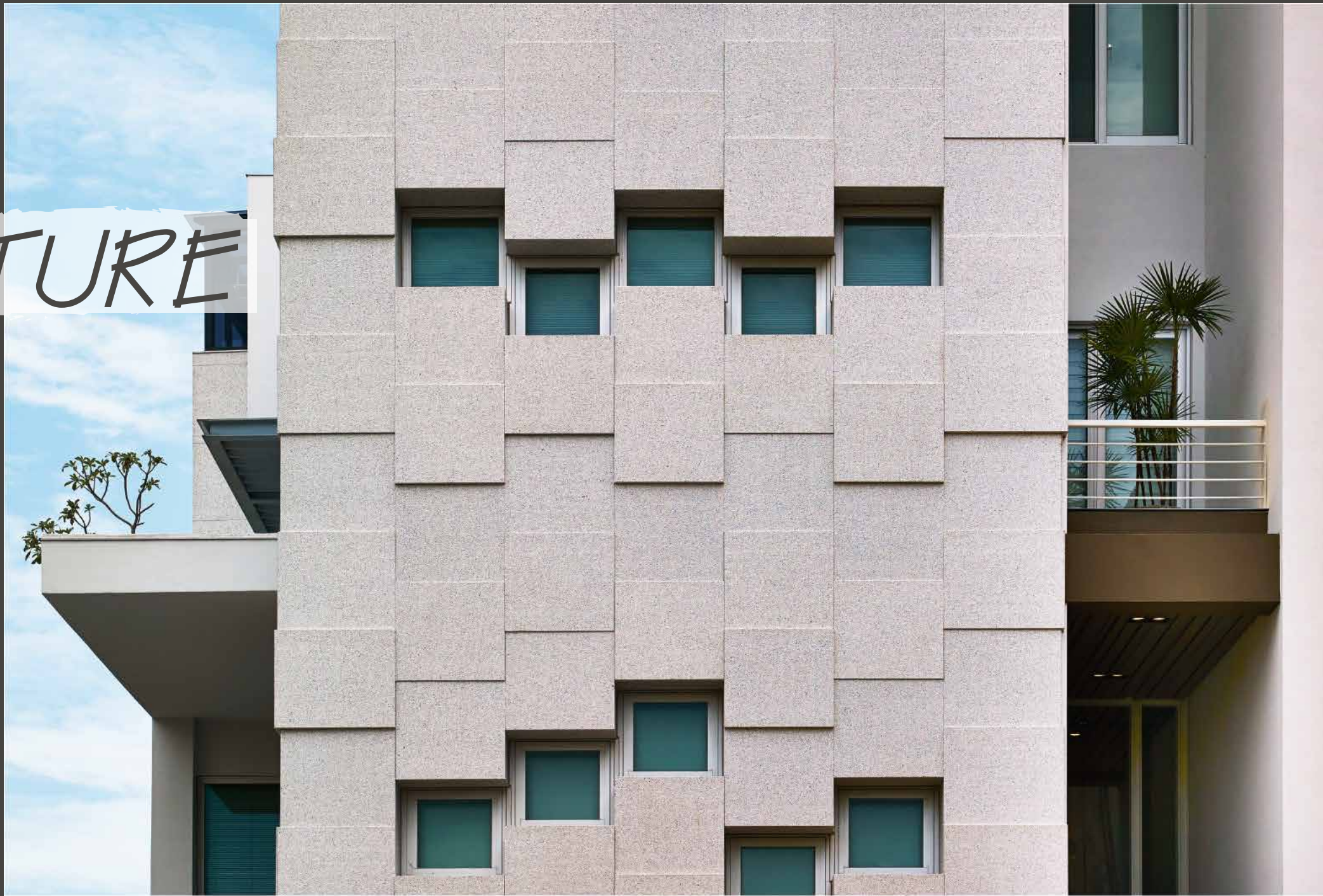


SCULPTURE





allowing residents to return
to interacting with the
purest spaces, the green
spaces, and relishing the
sunshine flooding inside.



Innovations in the Environment The white sculptural architecture illustrates spatial aesthetics. Considering the relationship between man and nature, the art of light and space, creating a modest setting, and removing superfluous decorations can bring a living space back to pure tranquility. What looks like a simple design utilizes line proportions and colors to achieve a balance while blurring the boundaries between the indoors and outdoors.







In terms of layout, the designer lined up all the essential spaces on the east side of the foundation so that the west side could present the different layers of the architecture. These layers were used to create a relaxing balcony area.



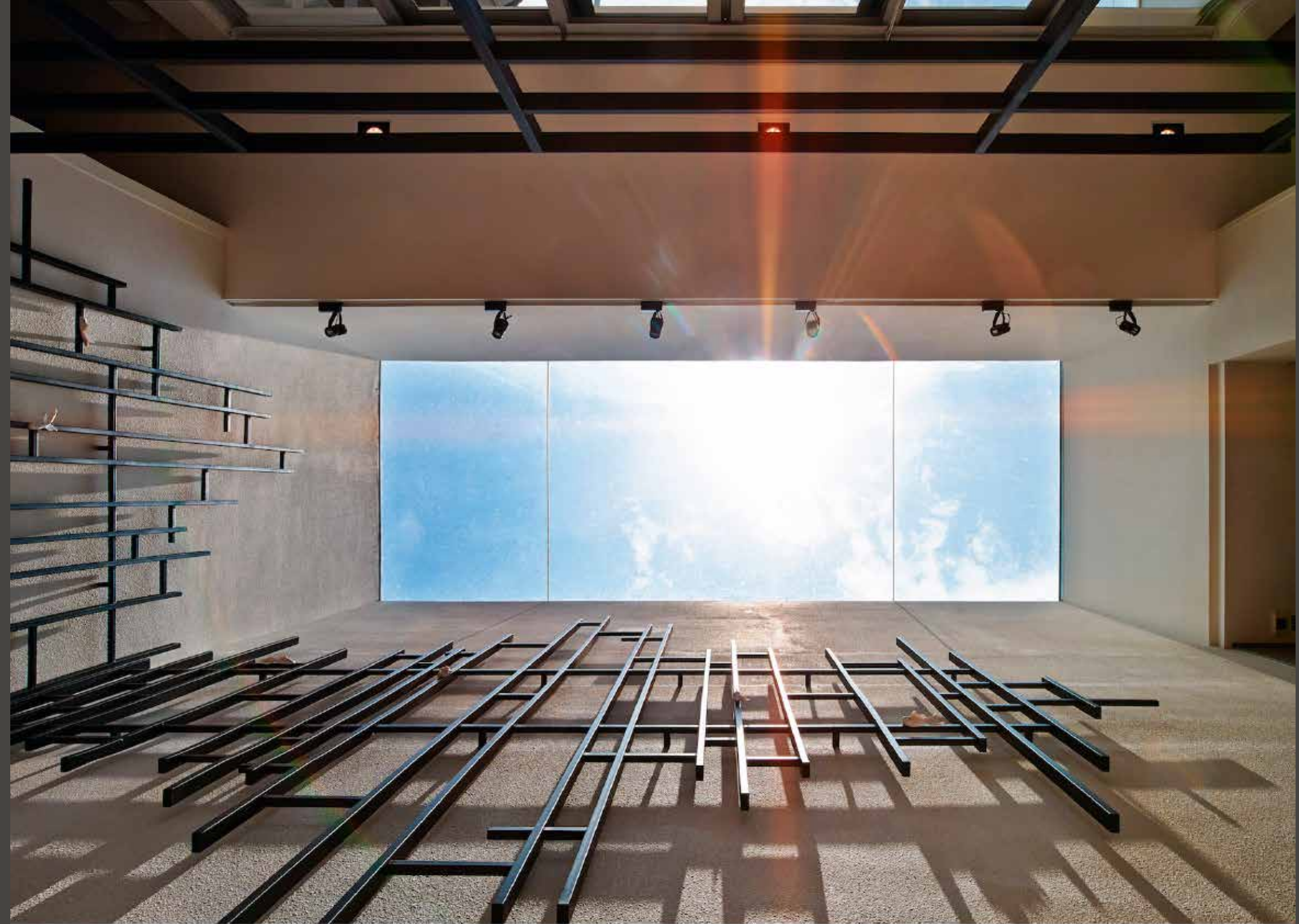


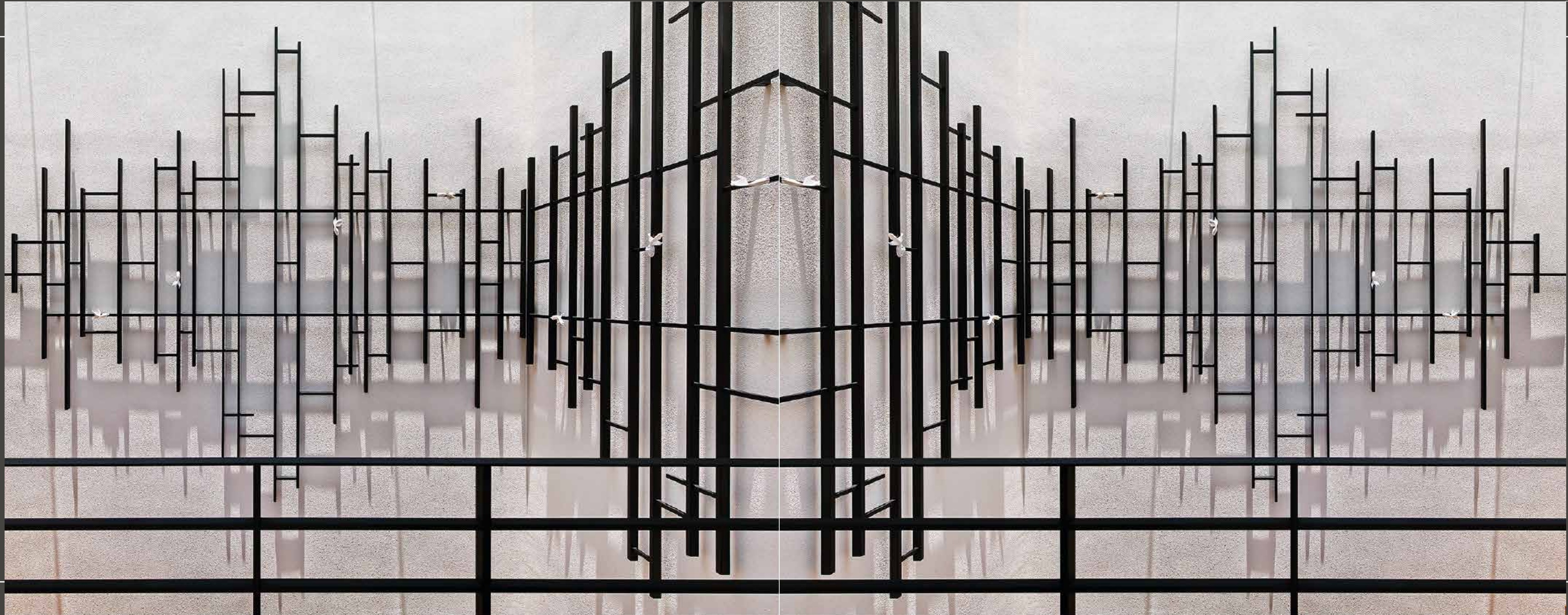
ROOM



The stairs are located on the sturdy, windowless east wall. Light shining through from the small courtyard illuminates the beautiful dynamics of hard and soft edges between the solid wall and metal sculpture.

The straight set of stairs is thoughtfully placed on the sturdy east wall, and a little courtyard allows light to reach the first floor. On the white wall there is a customized metal sculpture for the homeowner; it changes in different lighting, which creates shadows shifting throughout the day as if performing a dance.



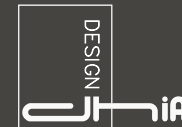




Arch x Interior Design
D.H.I.A. International Design Co., Ltd.







Arch x Interior Design
D.H.I.A. International Design Co., Ltd.

Granite slabs of different thicknesses, the same size as the windows, are hung in carefully calculated positions on the outer walls. During the day they are undisturbed, but light from the windows at night spills across them and breathes life into the sculptural architecture.

Three materials are used for the exterior: granite, German paint, and metal pieces. Because there are small gaps between the granite and the outer walls and between each slab of granite, heat radiation is dissipated more effectively.

Paint coated on the building is susceptible to rain and dust that will affect its exterior cleanliness. During construction we installed metal plates one centimeter thick under all possible drip lines to redirect any water, keeping the architecture clean.